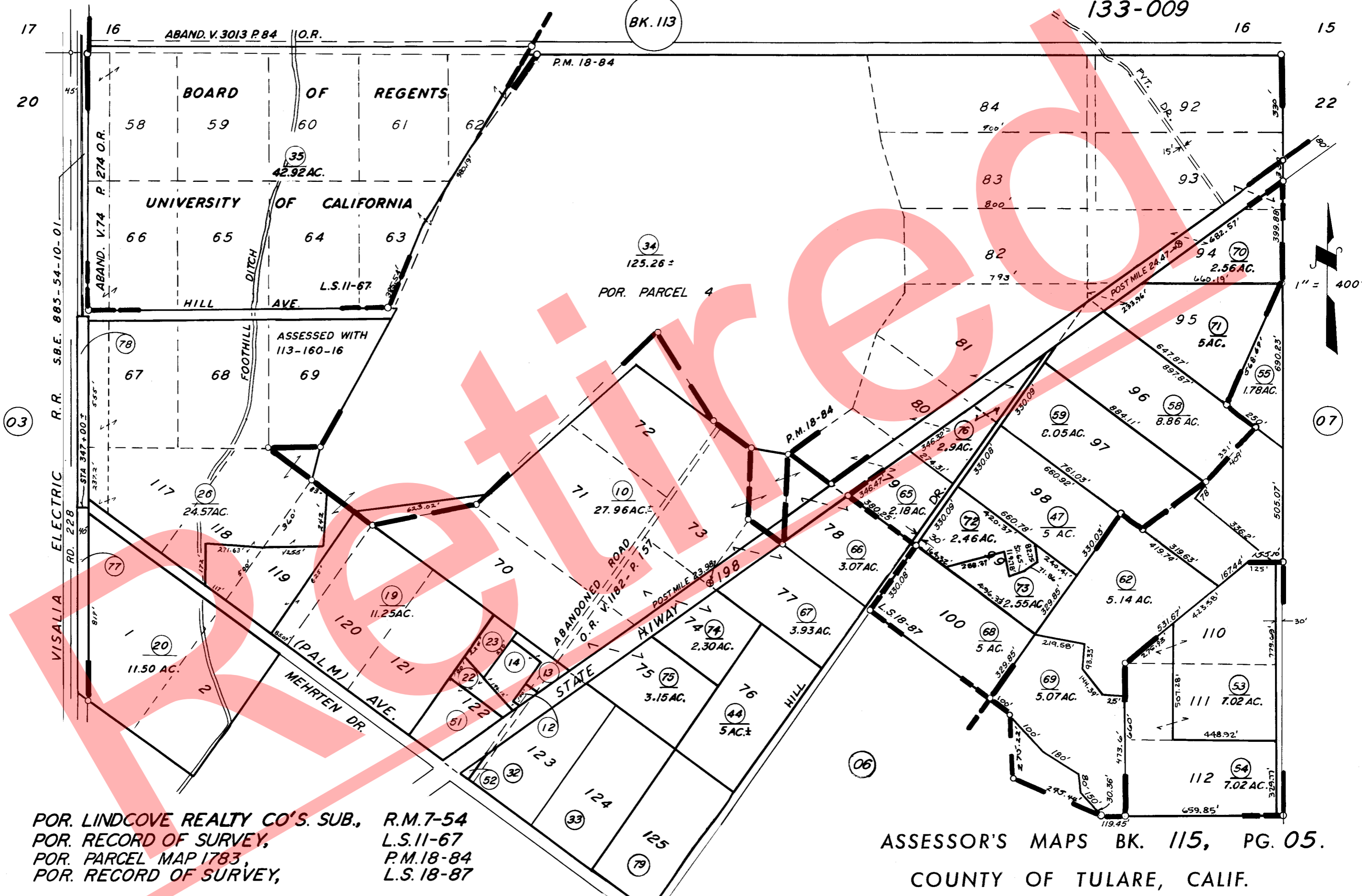


BK. 113



POR. LINDCOVE REALTY CO'S. SUB., R.M.7-54
 POR. RECORD OF SURVEY, L.S.11-67
 POR. PARCEL MAP 1783, P.M.18-84
 POR. RECORD OF SURVEY, L.S.18-87

ASSESSOR'S MAPS BK. 115, PG. 05.
 COUNTY OF TULARE, CALIF.

NOTE - ASSESSOR'S BLOCK NUMBERS SHOWN IN ELLIPSES
 ASSESSOR'S PARCEL NUMBERS SHOWN IN CIRCLES