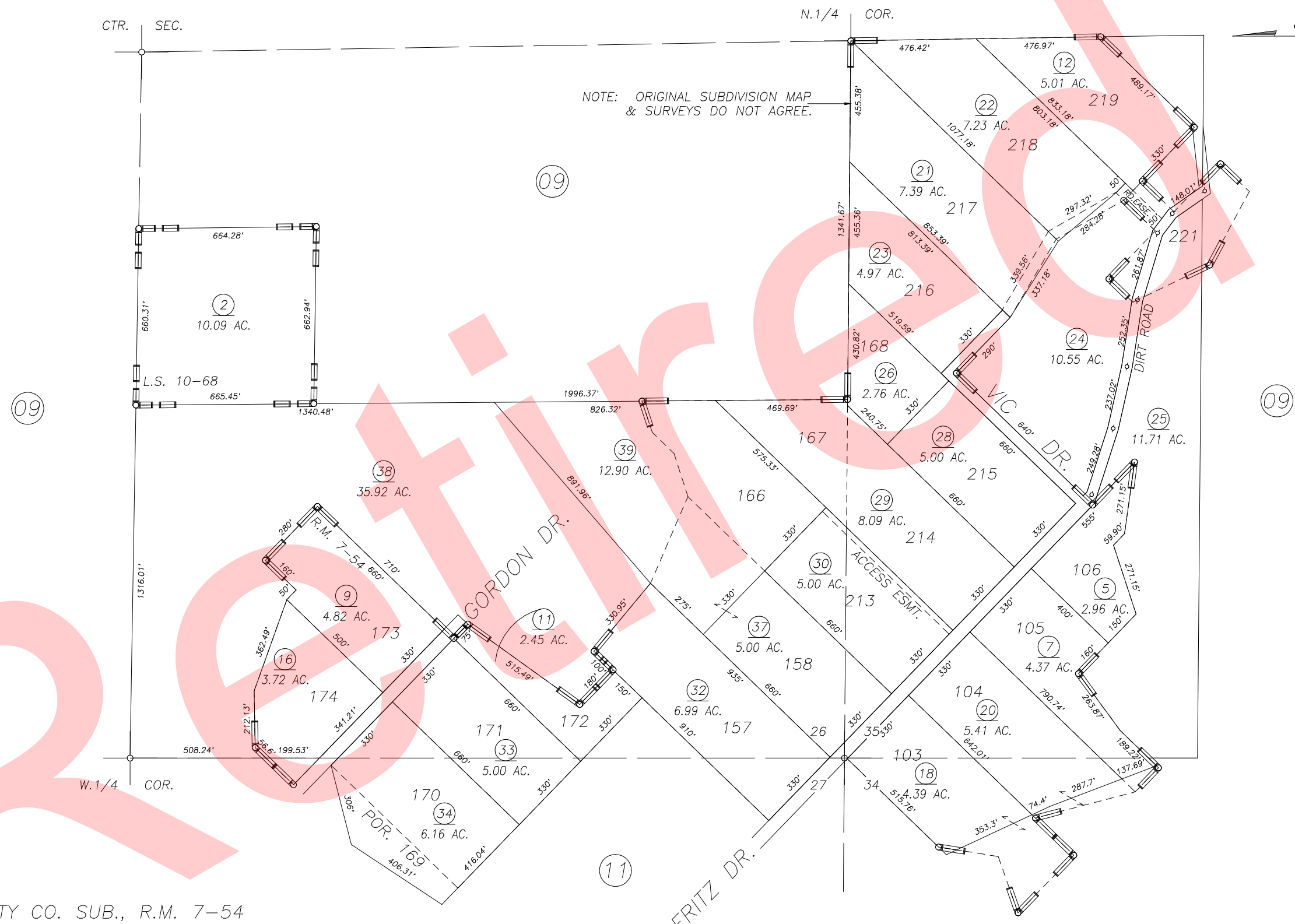
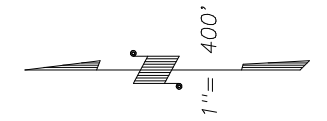


DISCLAIMER
 THIS MAP WAS PREPARED FOR LOCAL PROPERTY ASSESSMENT PURPOSES ONLY AND THE PARCELS SHOWN HEREON MAY NOT COMPLY WITH STATE AND LOCAL SUBDIVISION ORDINANCES, AND NO LIABILITY IS ASSUMED FOR THE USE OF THE INFORMATION SHOWN HEREON.

POR. S 1/2 SEC. 26, 27 & N 1/2 SEC. 34, 35, T.18S., R.27E., M.D.B. & M. Tax Area Code 115-10

86-004



PLA	REVISION	DATE	BY
96-038		4/13/2000	KPT

POR. LINDCOVE REALTY CO. SUB., R.M. 7-54
 RECORD OF SURVEY, L.S. 10-68

ASSESSOR'S MAPS BK. 115, PG. 10.
 COUNTY OF TULARE, CALIF.

NOTE: Assessor's Block Numbers Shown in Ellipses
 Assessor's Parcel Numbers Shown in Circles