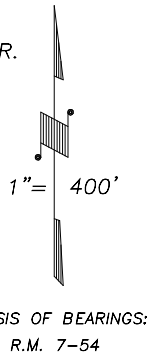
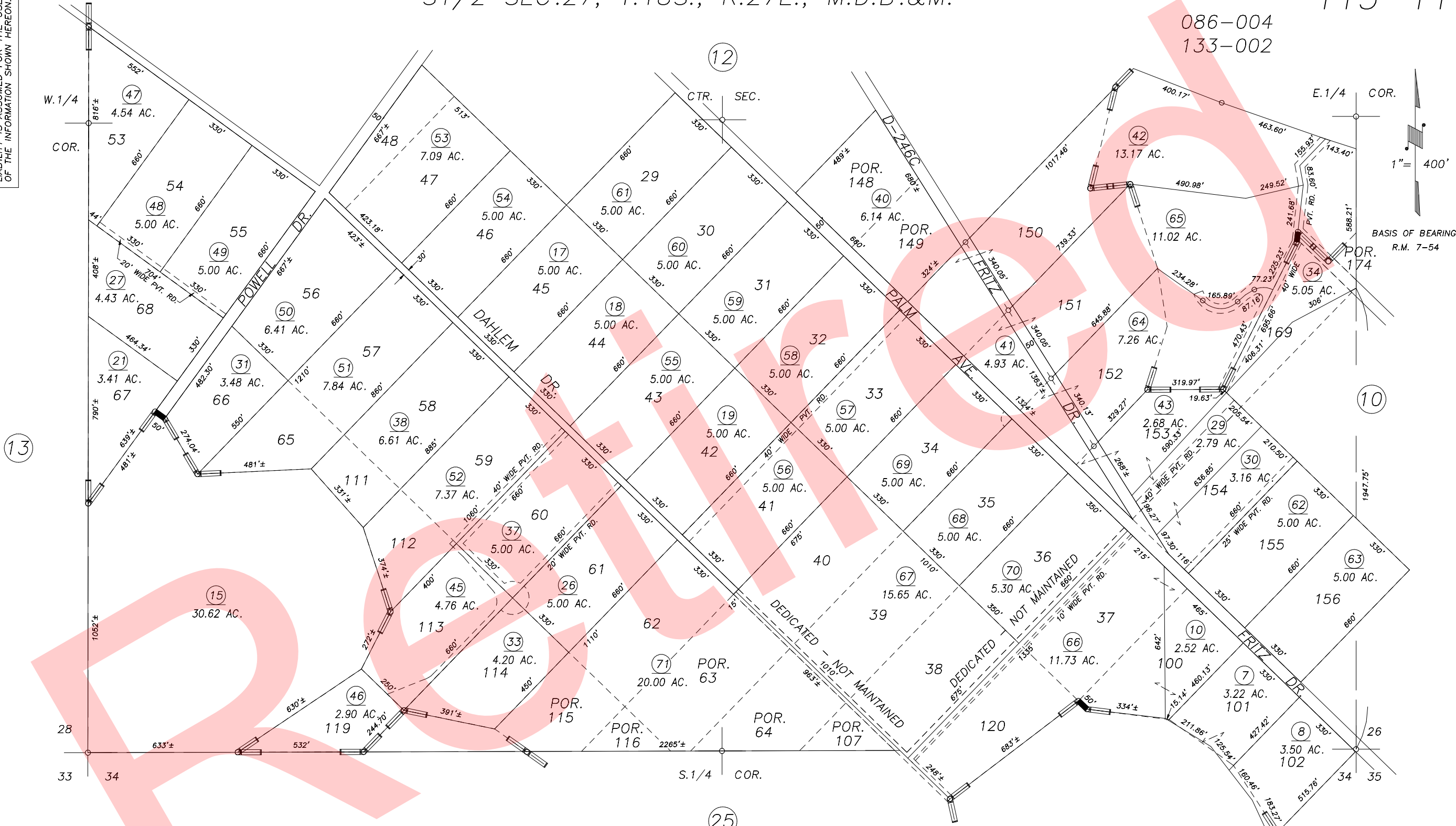


S1/2 SEC.27, T.18S., R.27E., M.D.B.&M.

Tax Area Codes 115-11
086-004
133-002

DISCLAIMER
THIS MAP WAS PREPARED FOR LOCAL PROPERTY ASSESSMENT PURPOSES ONLY AND THE PARCELS SHOWN HEREON MAY NOT COMPLY WITH STATE AND LOCAL SUBDIVISION ORDINANCES, AND NO LIABILITY IS ASSUMED FOR THE USE OF THE INFORMATION SHOWN HEREON.



POR. LINDCOVE REALTY CO. SUB., R.M. 7-54

VICINITY OF LINDCOVE
ASSESSOR'S MAPS BK.115 , PG.11
COUNTY OF TULARE, CALIFORNIA, U.S.A.

NOTE: Assessor's Parcel Numbers Shown in Circles
Assessor's Block Numbers Shown in Ellipses

ADD TRAC NO.	11/28/2007	KMS
REVISION	DATE	TECH