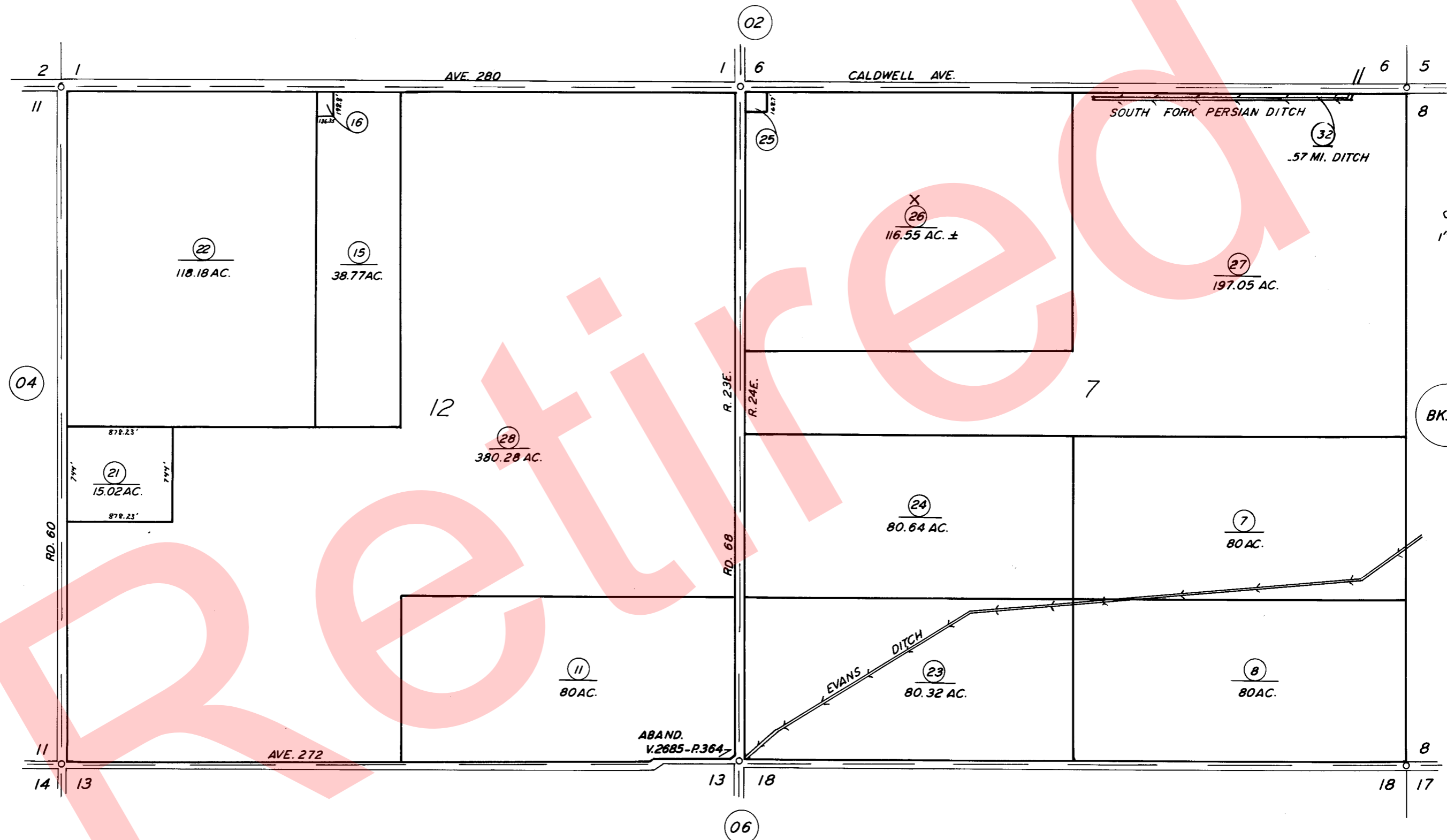


SEC. 12, T.19S., R.23E., & SEC. 7, T.19S., R.24E., M. D. B. & M.

TAX CODE AREA 118-03

153-081
153-083



ASSESSOR'S MAPS BK. 118, PG. 03.

COUNTY OF TULARE, CALIF.

NOTE - ASSESSOR'S BLOCK NUMBERS SHOWN IN ELLIPSES
ASSESSOR'S PARCEL NUMBERS SHOWN IN CIRCLES

