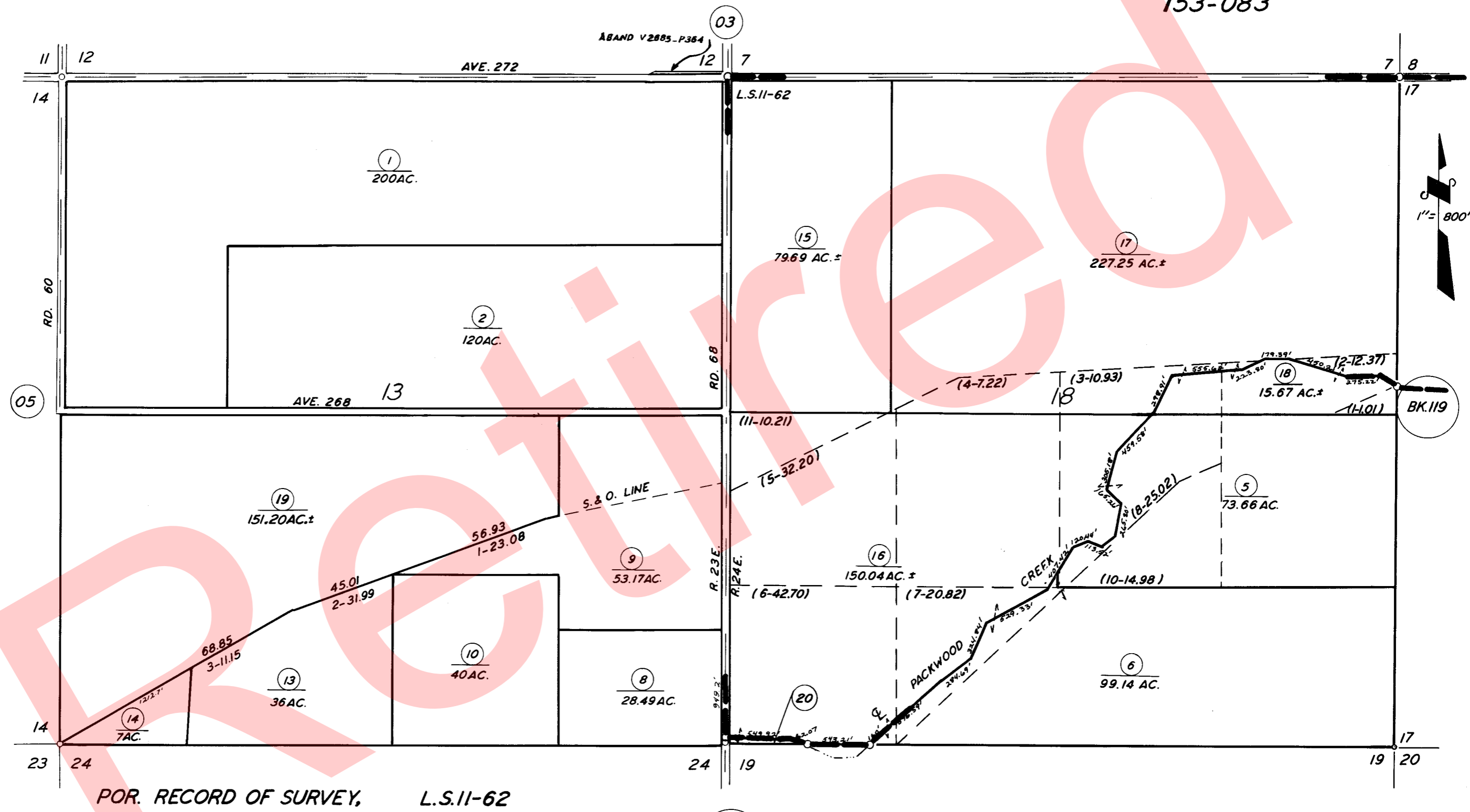


SEC. 13, T.19S., R.23E., & SEC. 18, T.19S., R.24E.,  
M.D.B. & M.

TAX CODE AREA **118-06**  
115-001  
153-080  
153-083



POR. RECORD OF SURVEY, L.S.11-62

BK.148

ASSESSOR'S MAPS BK. 118, PG. 06.  
COUNTY OF TULARE, CALIF.

NOTE - ASSESSOR'S BLOCK NUMBERS SHOWN IN ELLIPSES  
ASSESSOR'S PARCEL NUMBERS SHOWN IN CIRCLES

