

**DISCLAIMER**

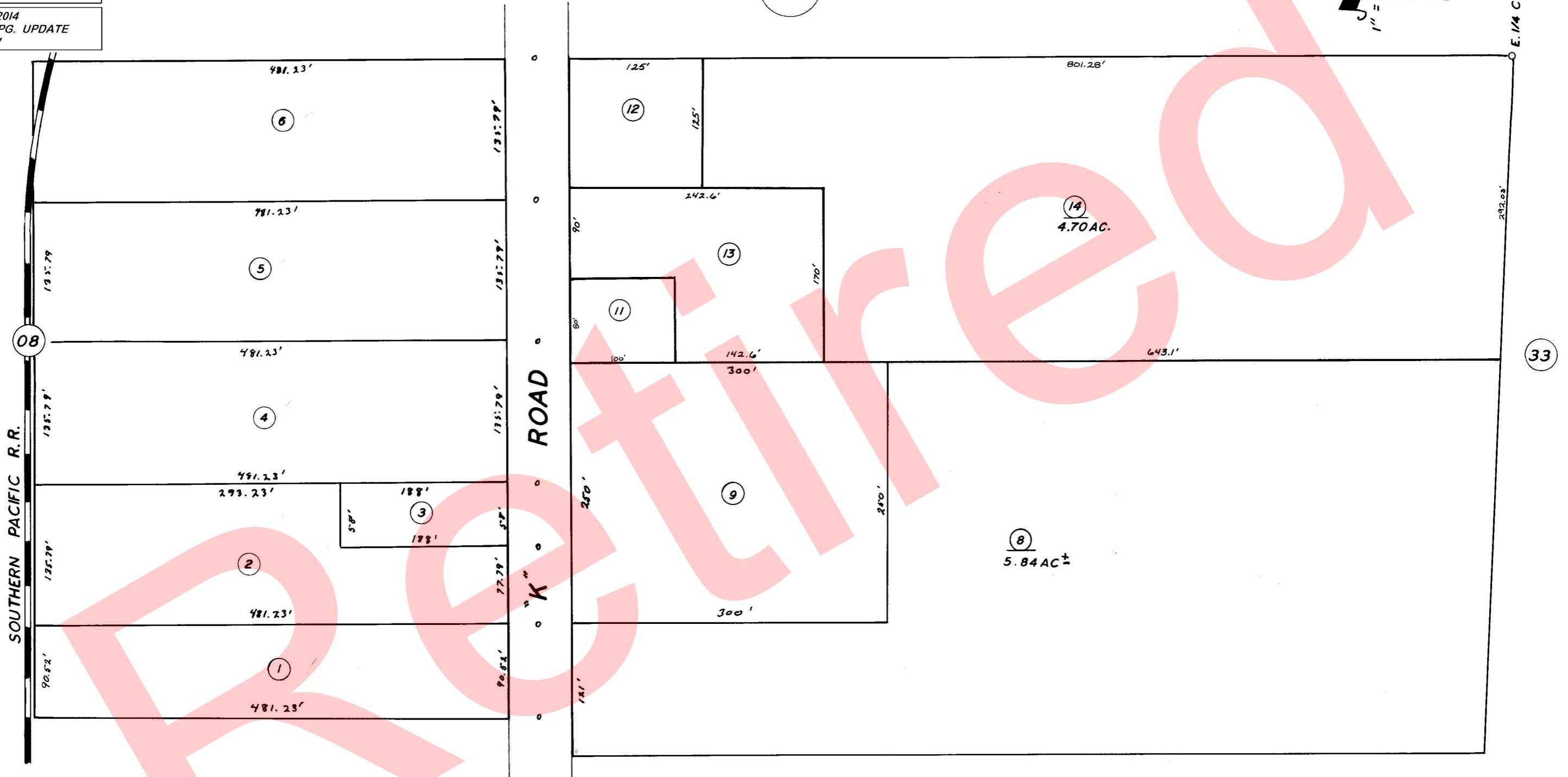
THIS MAP WAS PREPARED FOR LOCAL PROPERTY ASSESSMENT PURPOSES ONLY. THE PARCELS SHOWN HEREON MAY NOT COMPLY WITH STATE AND LOCAL SUBDIVISION ORDINANCES. NO LIABILITY IS ASSUMED FOR THE USE OF THE INFORMATION HEREON.

REVISED: 03/31/2014  
REASON: ADJ. PG. UPDATE  
CAD TECH: RLW

POR. SE 1/4 OF NE 1/4 SEC. 5. T.19S., R.25E., M. D. B. & M.

TAX CODE AREA 123-09  
153-008

BK.126



08

33

10

ASSESSOR'S MAPS BK. 123, PG. 09.  
COUNTY OF TULARE, CALIF.

NOTE — ASSESSOR'S BLOCK NUMBERS SHOWN IN ELLIPSES  
ASSESSOR'S PARCEL NUMBERS SHOWN IN CIRCLES

