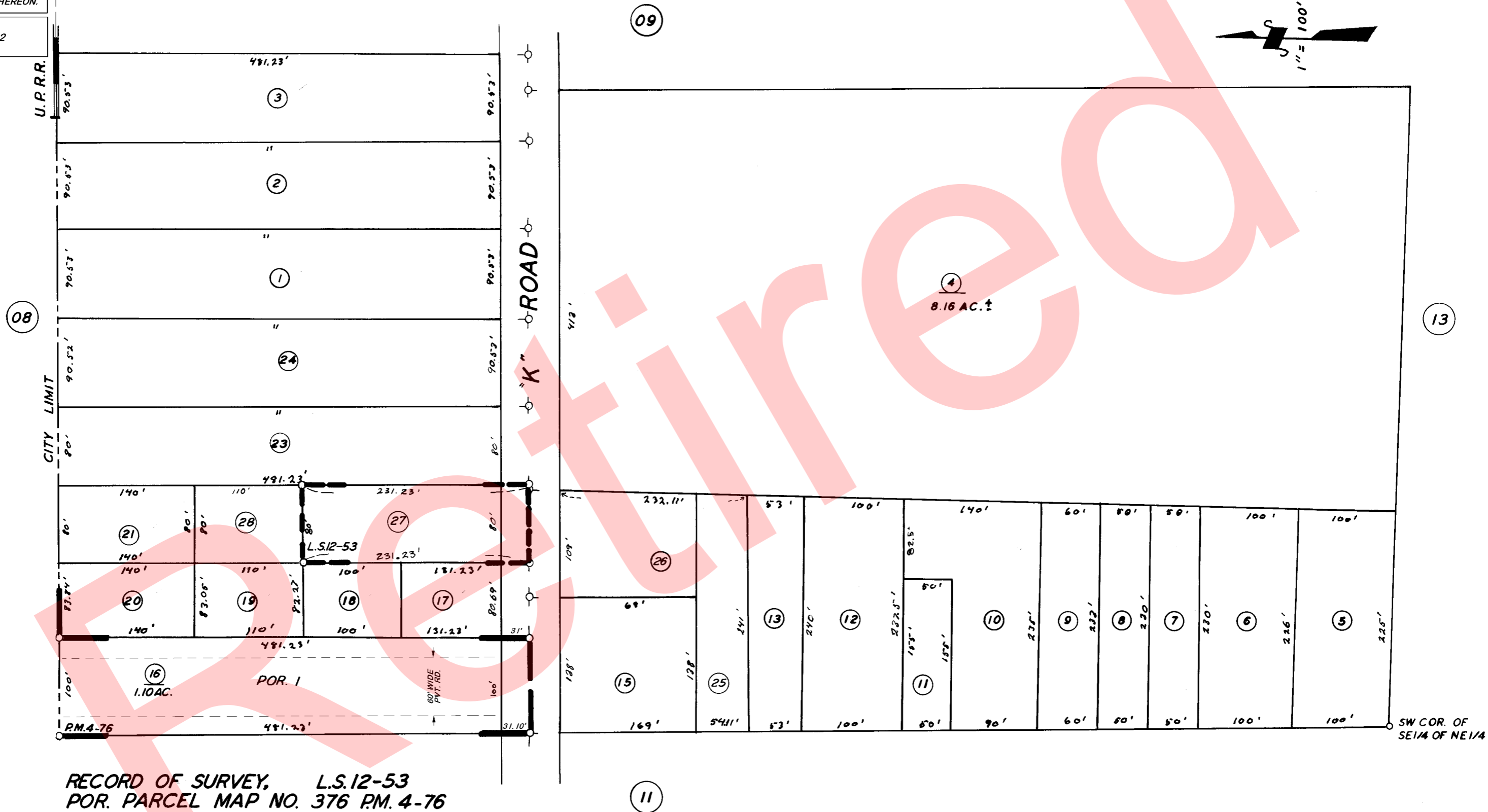
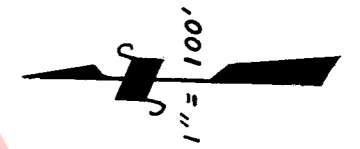


DISCLAIMER
 THIS MAP WAS PREPARED FOR LOCAL PROPERTY ASSESSMENT PURPOSES ONLY. THE PARCELS SHOWN HEREON MAY NOT COMPLY WITH STATE AND LOCAL SUBDIVISION ORDINANCES. NO LIABILITY IS ASSUMED FOR THE USE OF THE INFORMATION HEREON.

REVISED: 09/24/2007
 REASON: 2004-0116842
 CAD TECH: JRS

POR. SE 1/4 OF NE 1/4 SEC. 5. T.19S., R.25E., M. D. B. & M.

TAX CODE AREA
 153-008 123-10



RECORD OF SURVEY, L.S. 12-53
 POR. PARCEL MAP NO. 376 P.M. 4-76

ASSESSOR'S MAPS BK. 123, PG. 10.
 COUNTY OF TULARE, CALIF.

NOTE — ASSESSOR'S BLOCK NUMBERS SHOWN IN ELLIPSES
 ASSESSOR'S PARCEL NUMBERS SHOWN IN CIRCLES

