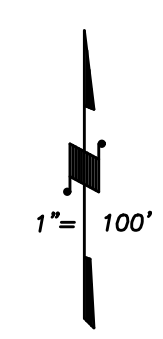
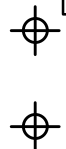


DISCLAIMER

THIS MAP WAS PREPARED FOR LOCAL PROPERTY ASSESSMENT PURPOSES ONLY AND THE PARCELS SHOWN HEREON MAY NOT COMPLY WITH STATE AND LOCAL SUBDIVISION ORDINANCES, AND NO LIABILITY IS ASSUMED FOR THE USE OF THE INFORMATION SHOWN HEREON. R & T CODE SEC. 327, 408.3, ETC.

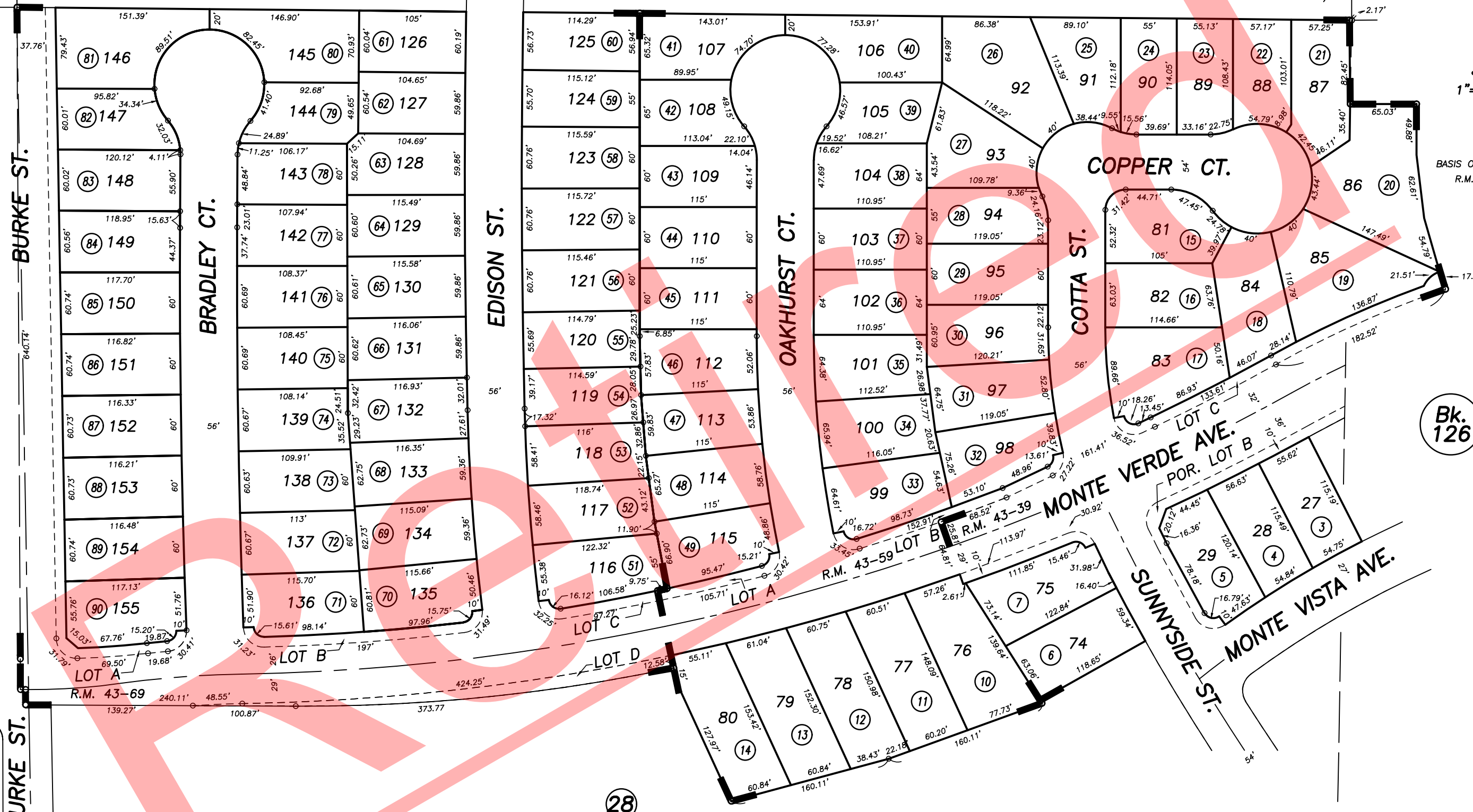
N1/2 OF NE1/4 OF SE1/4 SEC.5, T.19S., R.25E., M.D.B.&M.

Tax Area Codes 123-33
006-173



N1/4 COR. SE1/4

E.1/4 COR.



13

34

34

Bk. 126

28

MONTE VISTA AVE.

BURKE ST.

BURKE ST.

BURKE ST.

BRADLEY CT.

EDISON ST.

OAKHURST CT.

COTTA ST.

COPPER CT.

MONTE VERDE AVE.

SUNNYSIDE ST.

MONTE VISTA AVE.

POR. MADDOX AT CALDWELL 6, PHASES 1 & 2, R.M. 43-39
POR. REC. OF SURVEY, L.S. 32-47 (N LN S/2 SEC 5), ETC.
MADDOX AT CALDWELL 6, PHASE 3, R.M. 43-59
MADDOX AT CALDWELL 6, PHASE 4, R.M. 43-69

CITY OF VISALIA
ASSESSOR'S MAPS BK. 123 , PG. 13
COUNTY OF TULARE, CALIFORNIA, U.S.A.

NOTE: Assessor's Parcel Numbers Shown in Circles 1 123
Assessor's Block Numbers Shown in Ellipses

UPDATE BURKE ST.	03/17/2017	ARL
REVISION	DATE	TECH