

DISCLAIMER
 THIS MAP WAS PREPARED FOR LOCAL PROPERTY ASSESSMENT PURPOSES ONLY AND THE PARCELS SHOWN HEREON MAY NOT COMPLY WITH STATE AND LOCAL SUBDIVISION ORDINANCES, AND NO LIABILITY IS ASSUMED FOR THE USE OF THE INFORMATION SHOWN HEREON. R & T CODE SEC. 327, 408.3, ETC.

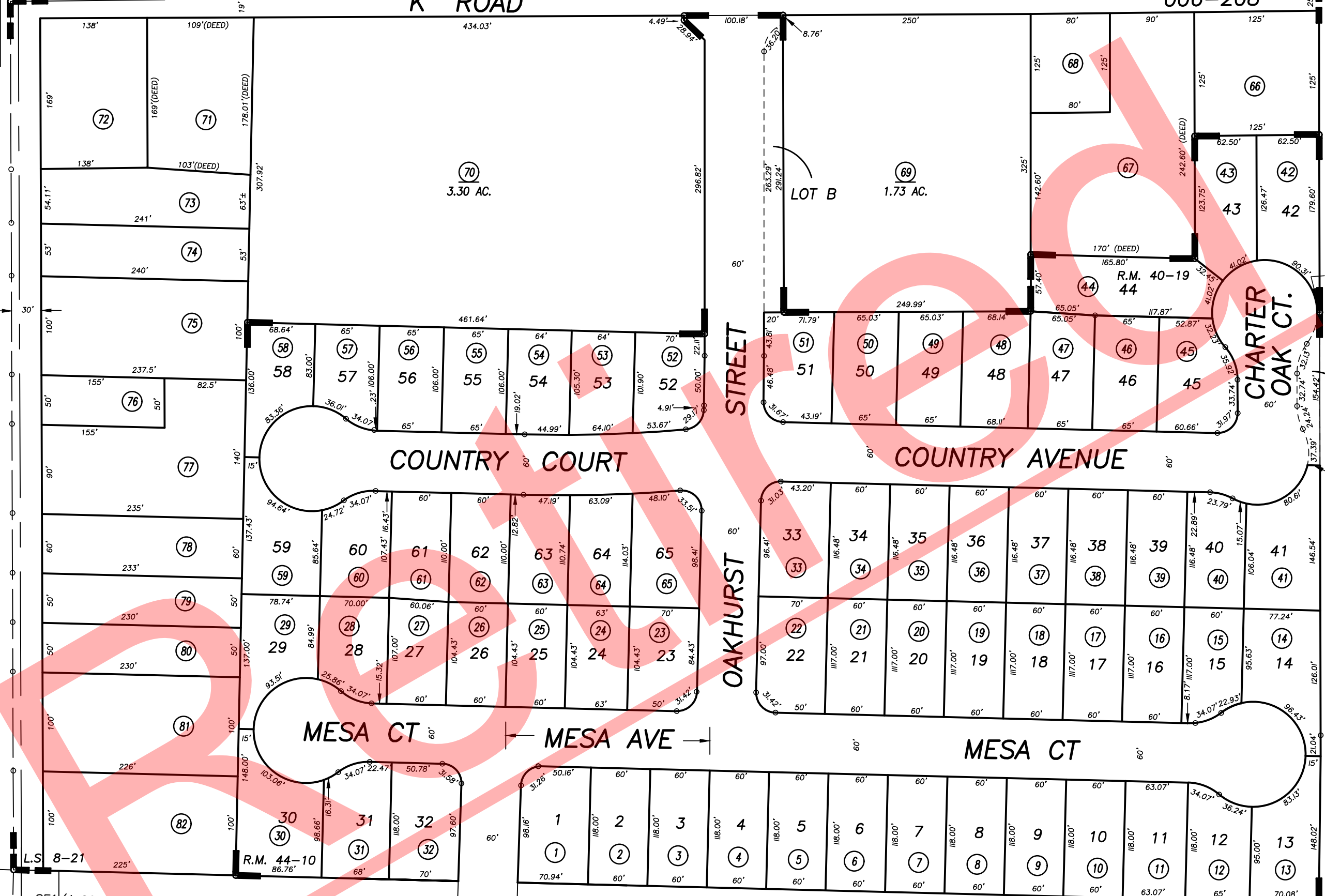
(35) S1/2 OF SE1/4 OF NE1/4 SEC.5, T.19S., R.25E., M.D.B.&M.
 "K" ROAD

Tax Area Codes
 006-208 123-34



BURKE STREET

OAKHURST STREET



(11)

Bk. 126

N.1/4 COR. SE1/4 COR.
 RECORD OF SURVEY, L.S. 8-21
 REIMER SUBDIVISION, R.M. 44-10

(33)

CITY OF VISALIA
 ASSESSOR'S MAPS BK. 123, PG. 34
 COUNTY OF TULARE, CALIFORNIA, U.S.A.

NOTE: Assessor's Parcel Numbers Shown in Circles
 Assessor's Block Numbers Shown in Ellipses

T.R.A.C. UPDATE	05/13/2021	WAC
REVISION	DATE	TECH