

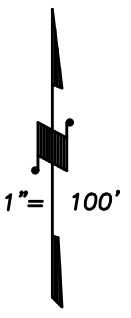
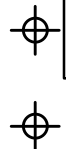
NE1/4 OF NE1/4 SEC. 8, T.19S., R.25E., M.D.B.&M.

Tax Area Codes

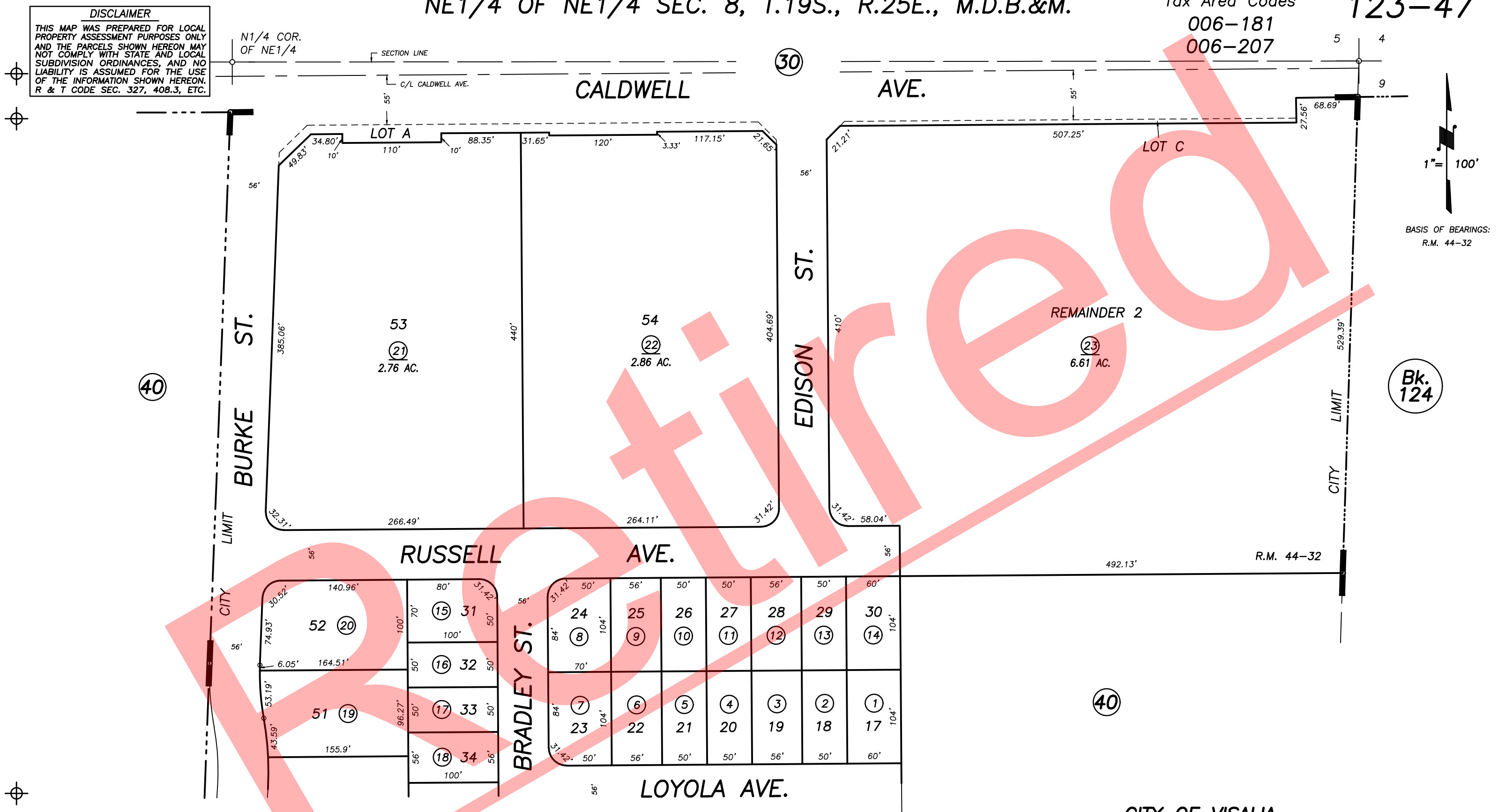
006-181
006-207

123-47

DISCLAIMER
THIS MAP WAS PREPARED FOR LOCAL PROPERTY ASSESSMENT PURPOSES ONLY AND THE PARCELS SHOWN HEREON MAY NOT COMPLY WITH STATE AND LOCAL SUBDIVISION ORDINANCES, AND NO LIABILITY IS ASSUMED FOR THE USE OF THE INFORMATION SHOWN HEREON. R & T CODE SEC. 327, 408.3, ETC.



BASIS OF BEARINGS:
R.M. 44-32



POR. DIAMOND OAKS, UNIT NO.1, R.M. 44-32

CITY OF VISALIA
ASSESSOR'S MAPS BK. 123 , PG. 47
COUNTY OF TULARE, CALIFORNIA, U.S.A.

NOTE: Assessor's Parcel Numbers Shown in Circles (1) (123) Assessor's Block Numbers Shown in Ellipses

| | | |
|--------------|------------|------|
| BK 126 REMAP | 01/06/2023 | WAC |
| REVISION | DATE | TECH |