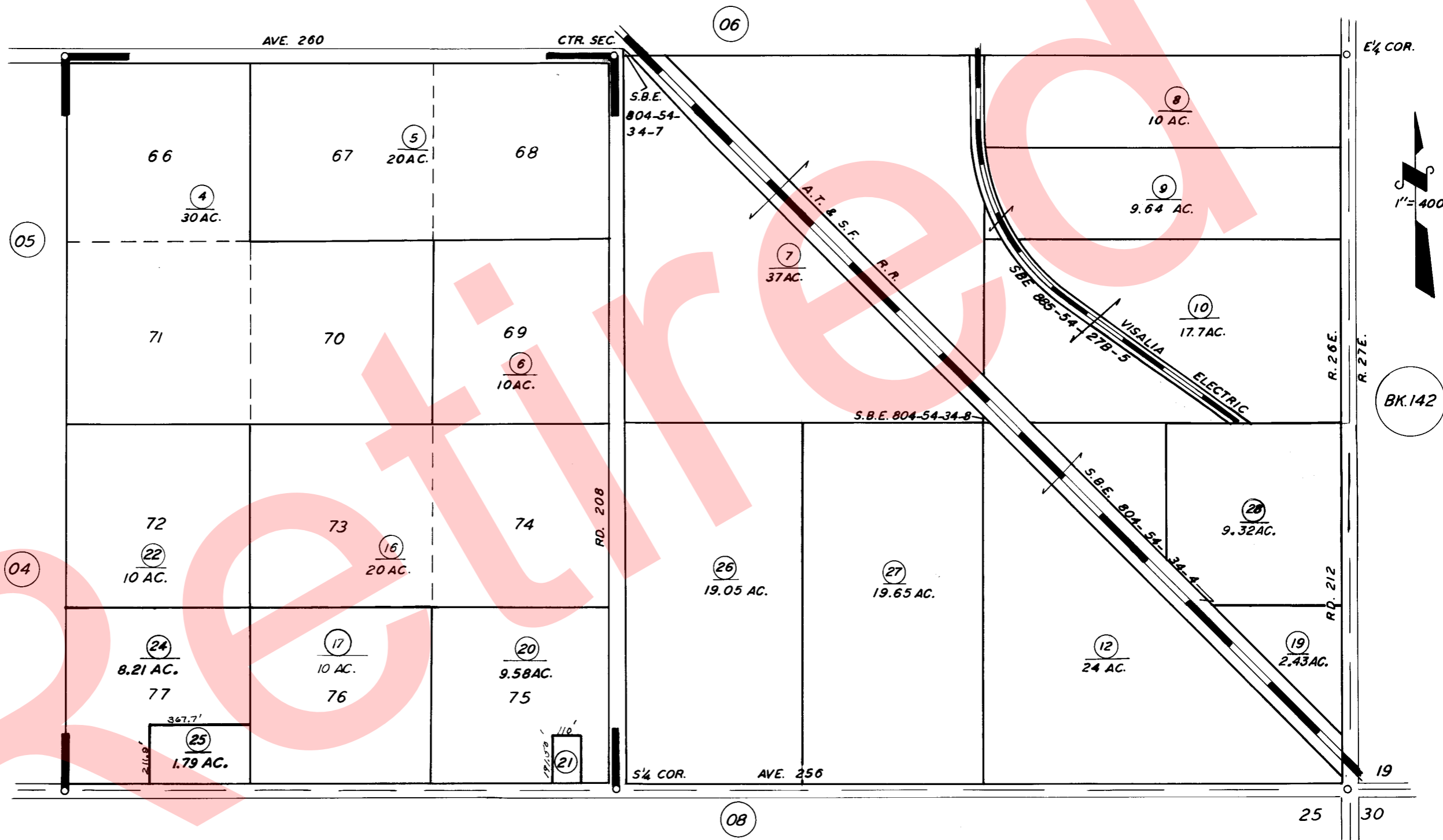


86-002



POR. ORANGEHURST COLONY, R.M. 8-32

ASSESSOR'S MAPS BK. 141, PG. 07

COUNTY OF TULARE, CALIF.

NOTE — ASSESSOR'S BLOCK NUMBERS SHOWN IN ELLIPSES
ASSESSOR'S PARCEL NUMBERS SHOWN IN CIRCLES

