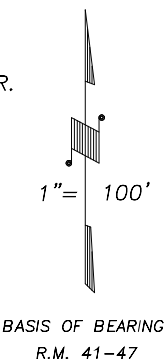
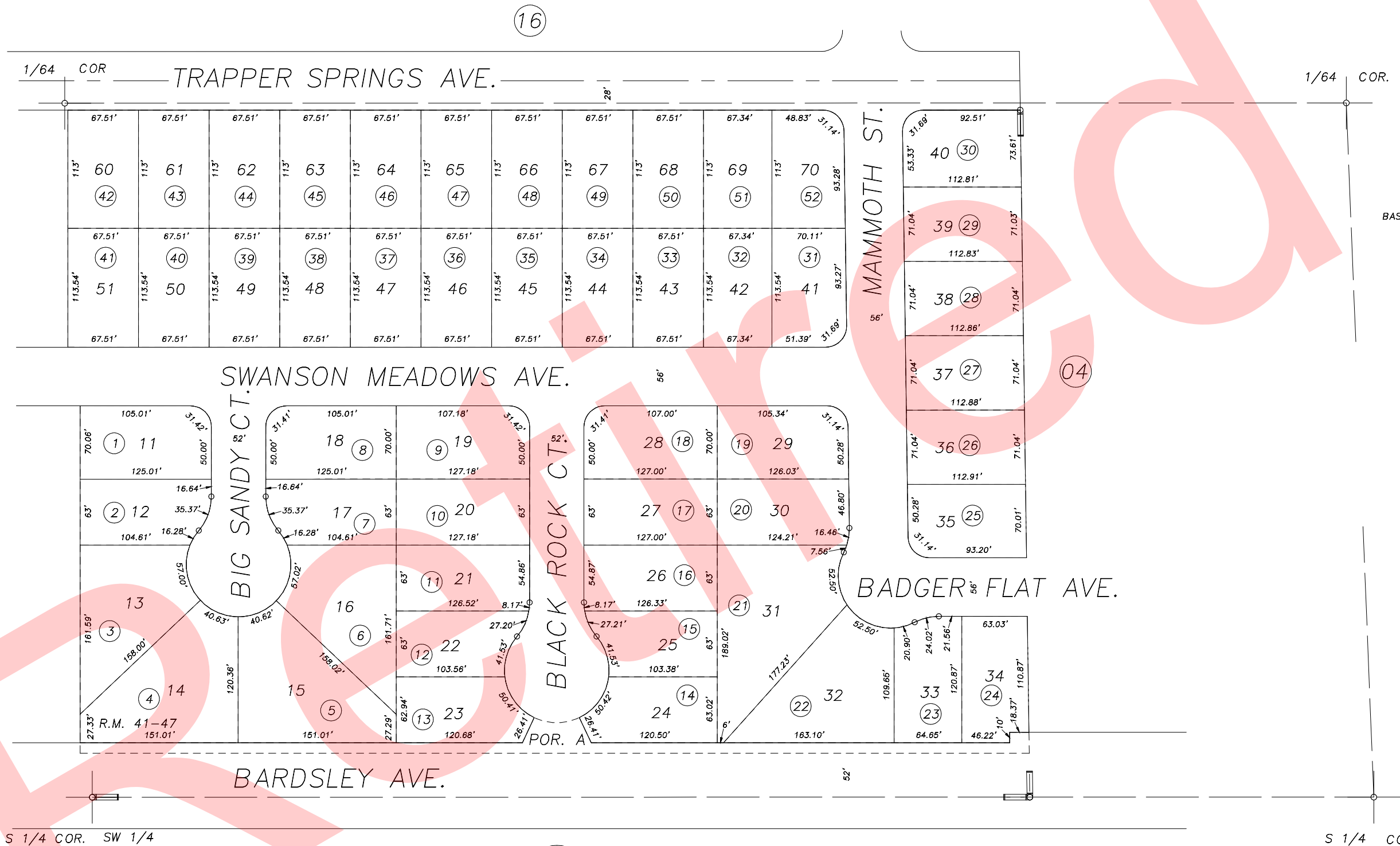


DISCLAIMER
THIS MAP WAS PREPARED FOR LOCAL PROPERTY ASSESSMENT PURPOSES ONLY AND THE PARCELS SHOWN HEREON MAY NOT COMPLY WITH STATE AND LOCAL SUBDIVISION ORDINANCES, AND NO LIABILITY IS ASSUMED FOR THE USE OF THE INFORMATION SHOWN HEREON.



POR. CAMBRIDGE HOMES PHASE 1, R.M. 41-47

Bk.
184

CITY OF TULARE
ASSESSOR'S MAPS BK.172 , PG.17
COUNTY OF TULARE, CALIFORNIA, U.S.A.

NOTE: Assessor's Parcel Numbers Shown in Circles 1 123
Assessor's Block Numbers Shown in Ellipses

T.R.A.C. CHANGE	07/19/2006	PHN
REVISION	DATE	TECH