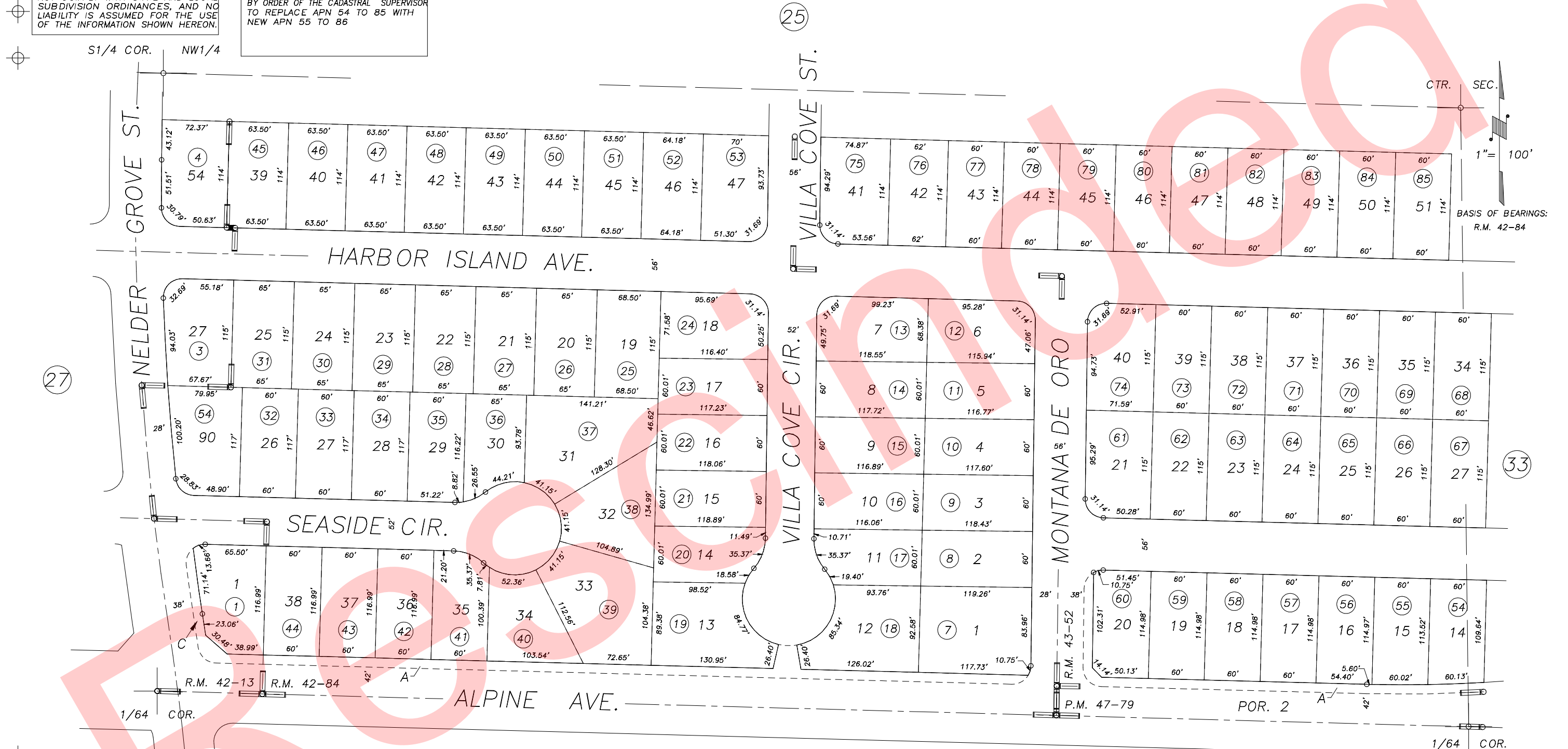


DISCLAIMER

THIS MAP WAS PREPARED FOR LOCAL PROPERTY ASSESSMENT PURPOSES ONLY AND THE PARCELS SHOWN HEREON MAY NOT COMPLY WITH STATE AND LOCAL SUBDIVISION ORDINANCES, AND NO LIABILITY IS ASSUMED FOR THE USE OF THE INFORMATION SHOWN HEREON.

NOTICE OF RESCISSION

THIS MAP WAS RESCINDED ON 06/19/2015 BACK TO 01/05/2015 BY ORDER OF THE CADASTRAL SUPERVISOR TO REPLACE APN 54 TO 85 WITH NEW APN 55 TO 86



POR. PALM RANCH NO. 2, R.M. 42-13
 POR. PALM RANCH NO. 3, R.M. 42-84
 POR. PALM RANCH NO. 5, R.M. 43-52
 POR. PARCEL MAP NO. 4674, P.M. 47-79

CITY OF TULARE
 ASSESSOR'S MAPS BK.172 , PG26
 COUNTY OF TULARE, CALIFORNIA, U.S.A.