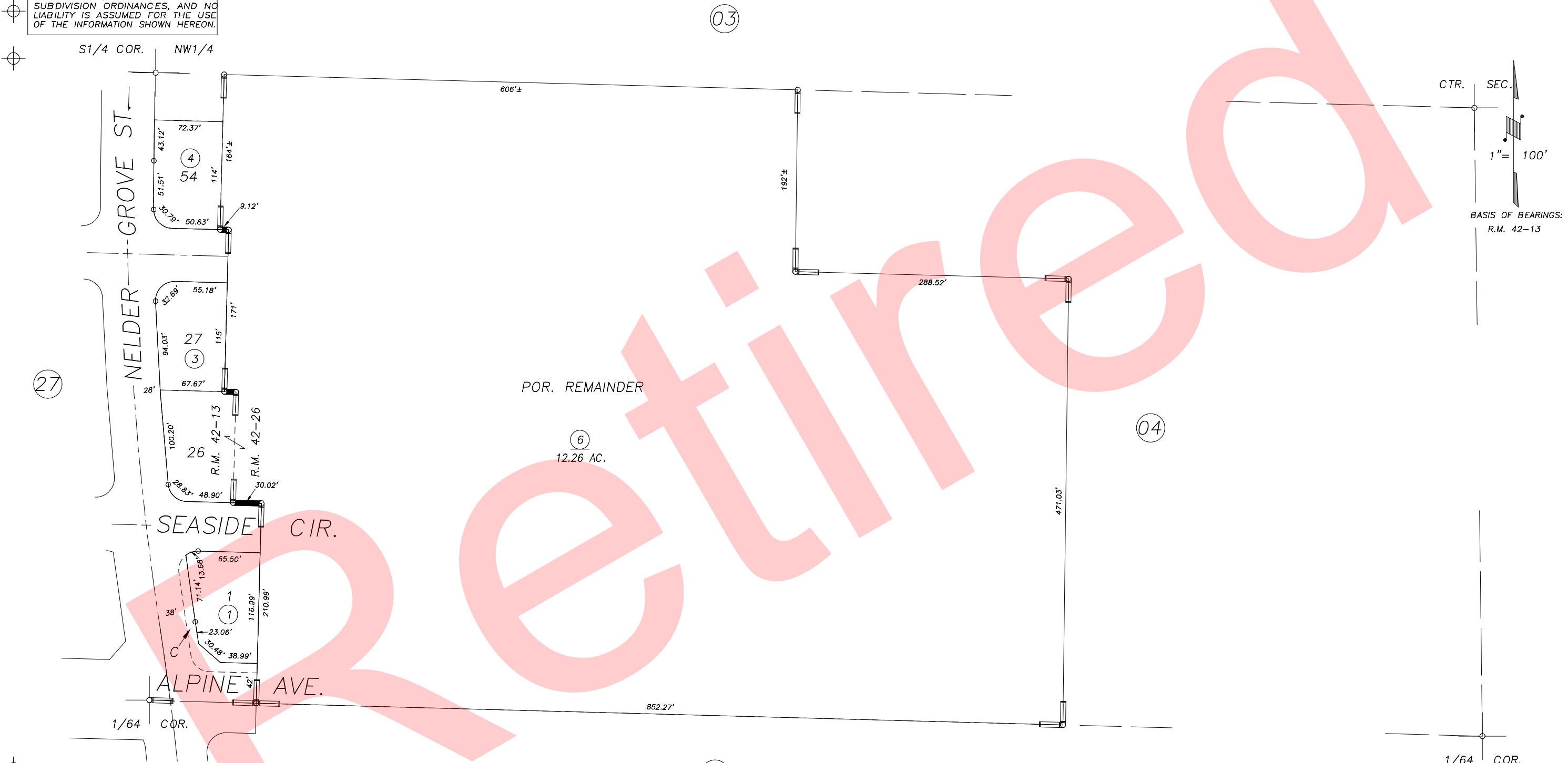


N1/2 OF NE1/4 OF SW1/4 SEC.7, T.20S.,R.25E., M.D.B.&M.

Tax Area Codes 172-26
005-104

DISCLAIMER
THIS MAP WAS PREPARED FOR LOCAL
PROPERTY ASSESSMENT PURPOSES ONLY
AND THE PARCELS SHOWN HEREON MAY
NOT COMPLY WITH STATE AND LOCAL
SUBDIVISION ORDINANCES, AND NO
LIABILITY IS ASSUMED FOR THE USE
OF THE INFORMATION SHOWN HEREON.



POR. PALM RANCH NO.2, R.M. 42-13
POR. PALM RANCH NO.1, R.M. 42-26

CITY OF TULARE
ASSESSOR'S MAPS BK.172 , PG.26
COUNTY OF TULARE, CALIFORNIA, U.S.A.

NOTE: Assessor's Parcel Numbers Shown in Circles
Assessor's Block Numbers Shown in Elipses

2007-0110917	9/22/2008	CBT
REVISION	DATE	TECH