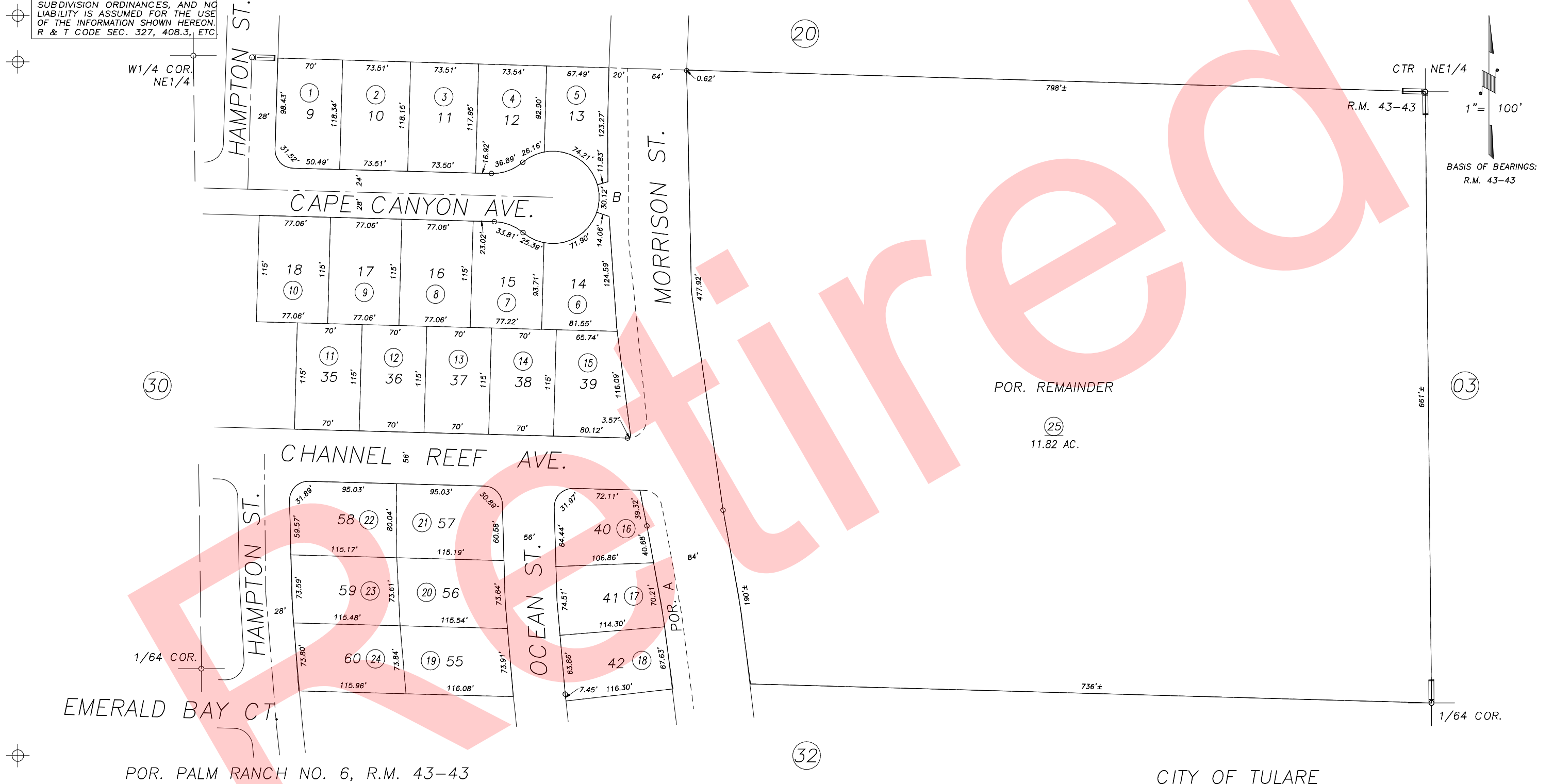


N1/2 OF SW1/4 OF NE1/4 SEC.7, T.20S., R.25E., M.D.B.&M.

Tax Area Codes 172-31
005-089

DISCLAIMER
THIS MAP WAS PREPARED FOR LOCAL PROPERTY ASSESSMENT PURPOSES ONLY AND THE PARCELS SHOWN HEREON MAY NOT COMPLY WITH STATE AND LOCAL SUBDIVISION ORDINANCES, AND NO LIABILITY IS ASSUMED FOR THE USE OF THE INFORMATION SHOWN HEREON. R & T CODE SEC. 327, 408.3, ETC



POR. REMAINDER
②⑤
11.82 AC.

POR. PALM RANCH NO. 6, R.M. 43-43

CITY OF TULARE
ASSESSOR'S MAPS BK.172 , PG.31
COUNTY OF TULARE, CALIFORNIA, U.S.A.

NOTE: Assessor's Parcel Numbers Shown in Circles ① ②③
Assessor's Block Numbers Shown in Ellipses ① ②③

2014-0023236	06/04/2014	LLB
REVISION	DATE	TECH