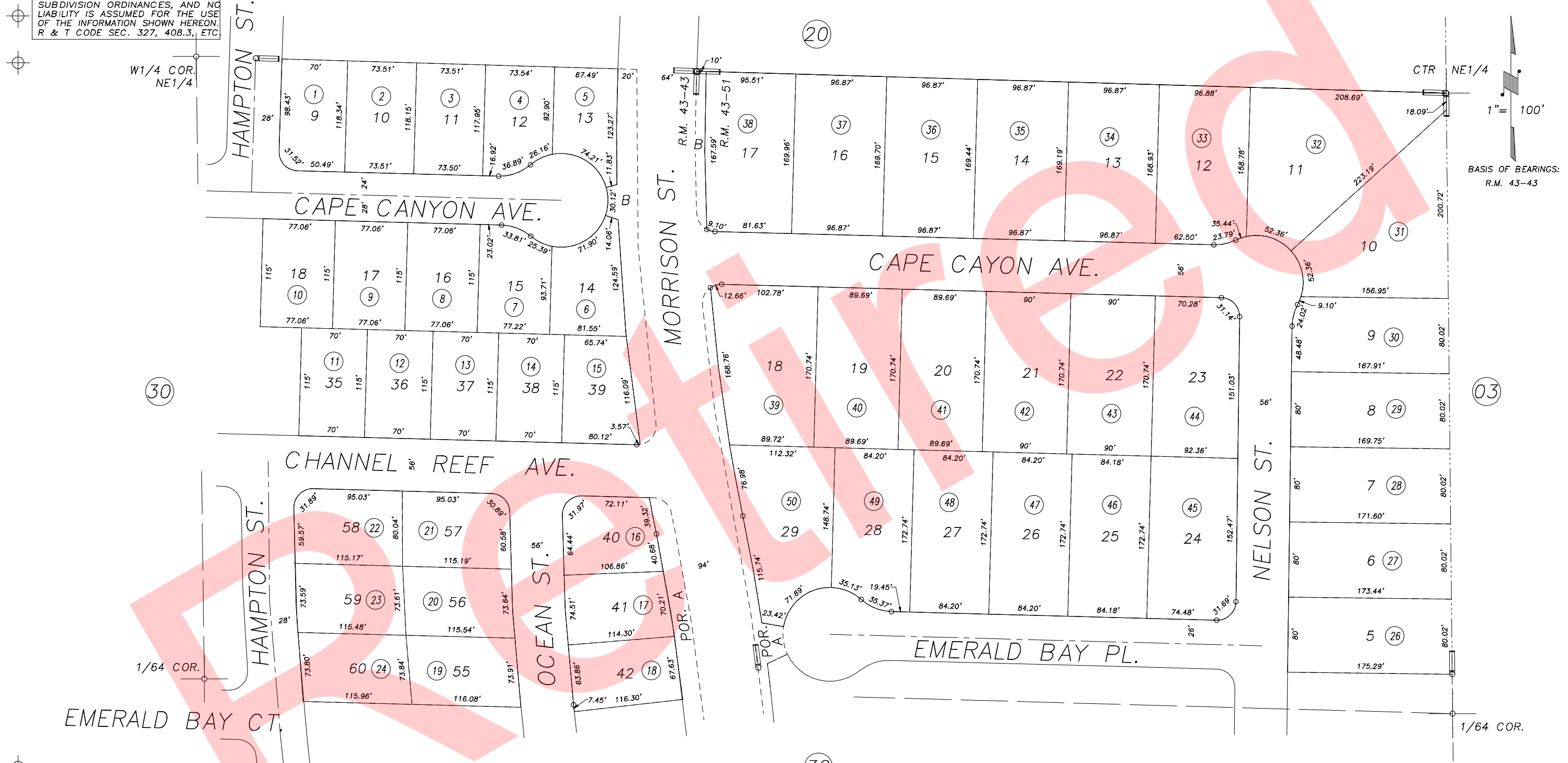


N1/2 OF SW1/4 OF NE1/4 SEC.7, T.20S., R.25E., M.D.B.&M.

Tax Area Codes 172-31  
005-089

**DISCLAIMER**  
THIS MAP WAS PREPARED FOR LOCAL PROPERTY ASSESSMENT PURPOSES ONLY AND THE PARCELS SHOWN HEREON MAY NOT COMPLY WITH STATE AND LOCAL SUBDIVISION ORDINANCES, AND NO LIABILITY IS ASSUMED FOR THE USE OF THE INFORMATION SHOWN HEREON. R & T CODE SEC. 327, 408.3, ETC



POR. PALM RANCH NO. 6, R.M. 43-43  
POR. PALM RANCH NO. 8, R.M. 43-51

CITY OF TULARE  
ASSESSOR'S MAPS BK.172 , PG.31  
COUNTY OF TULARE, CALIFORNIA, U.S.A.

NOTE: Assessor's Parcel Numbers Shown in Circles (1) (123)  
Assessor's Block Numbers Shown in Ellipses (30) (31) (32) (33)

2014-0059773	11/25/2014	ARP
REVISION	DATE	TECH