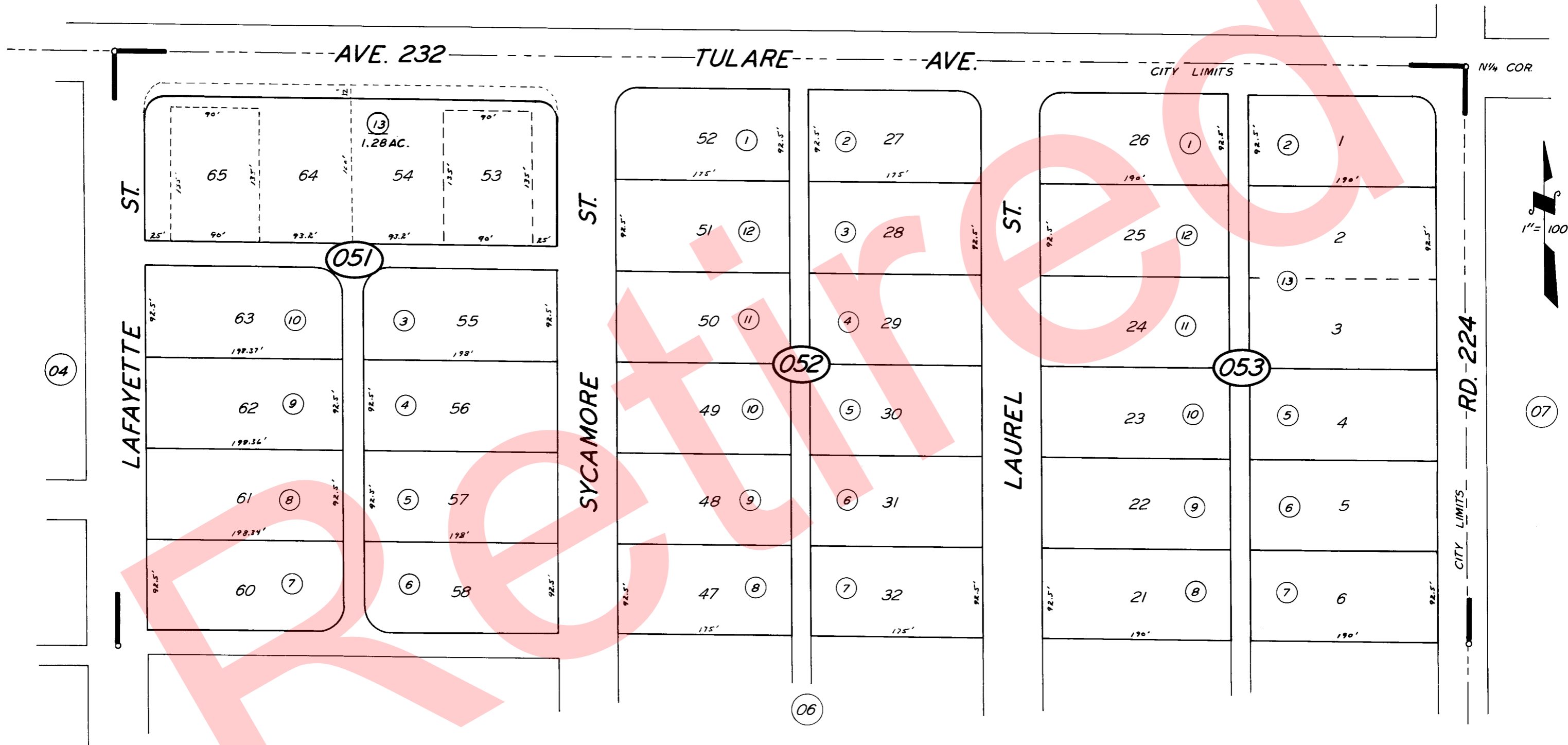


3-000  
3-023

BK. 202



POR. TR. NO. 38

R.M. 19-81

CITY OF LINDSAY  
ASSESSOR'S MAPS BK. 206, PG. 05  
COUNTY OF TULARE, CALIF.

3-1-64  
3-20-62 LT.

NOTE - ASSESSOR'S BLOCK NUMBERS SHOWN IN ELLIPSES  
ASSESSOR'S PARCEL NUMBERS SHOWN IN CIRCLES

