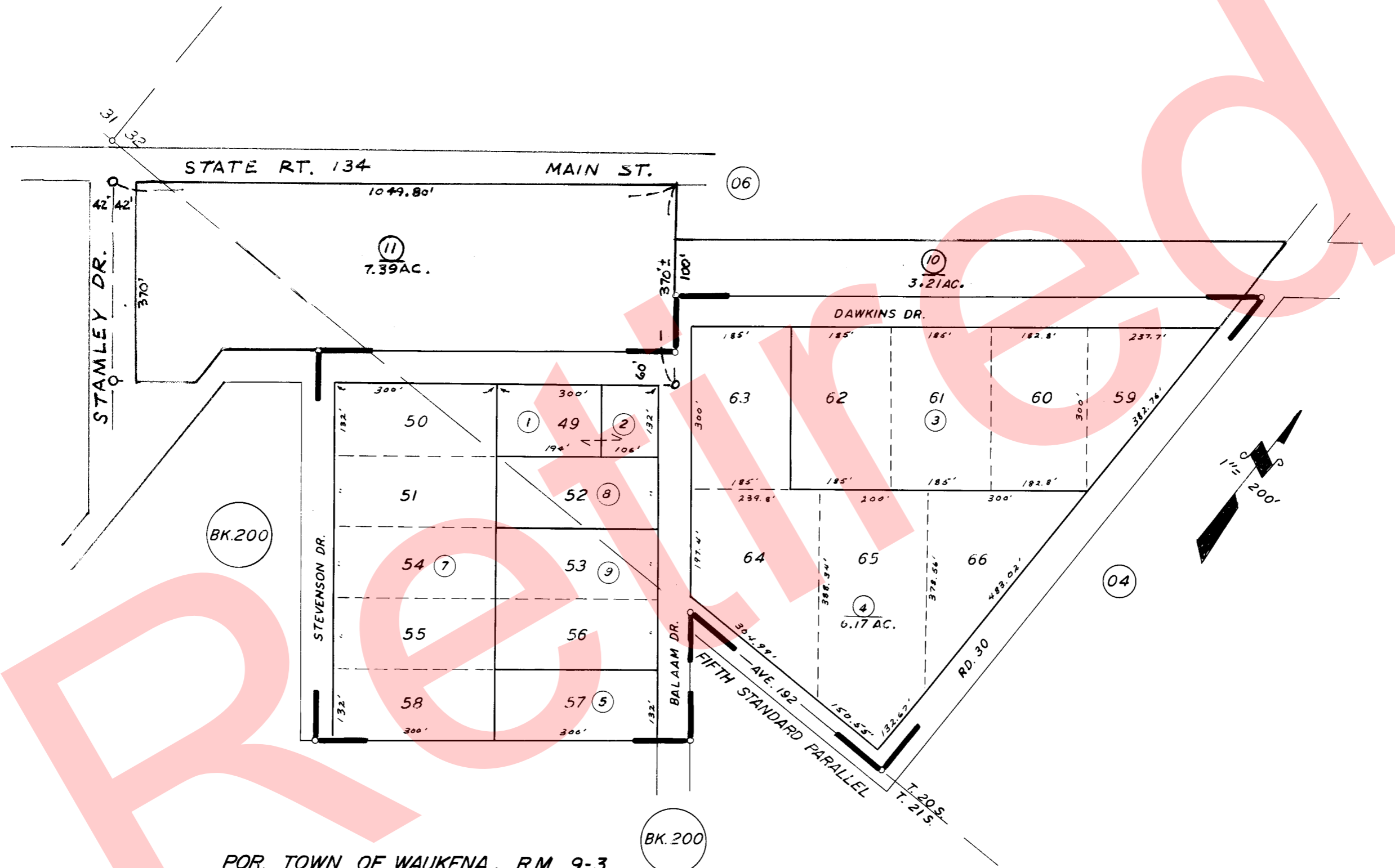


SLY. POR. SEC. 32, T. 20S., R. 23 E., M. D. B. & M.  
NLY. POR. SEC. 5, T. 21 S., R. 23 E., M. D. B. & M.

TAX CODE AREA 225-05  
155-003



POR. TOWN OF WAUKENA, R.M. 9-3  
POR. RECORD OF SURVEY, L.S. 9-63 (5th. STD. PRL.)

ASSESSOR'S MAPS BK. 225, PG. 05.  
COUNTY OF TULARE, CALIF.

NOTE - ASSESSOR'S BLOCK NUMBERS SHOWN IN ELLIPSES  
ASSESSOR'S PARCEL NUMBERS SHOWN IN CIRCLES

