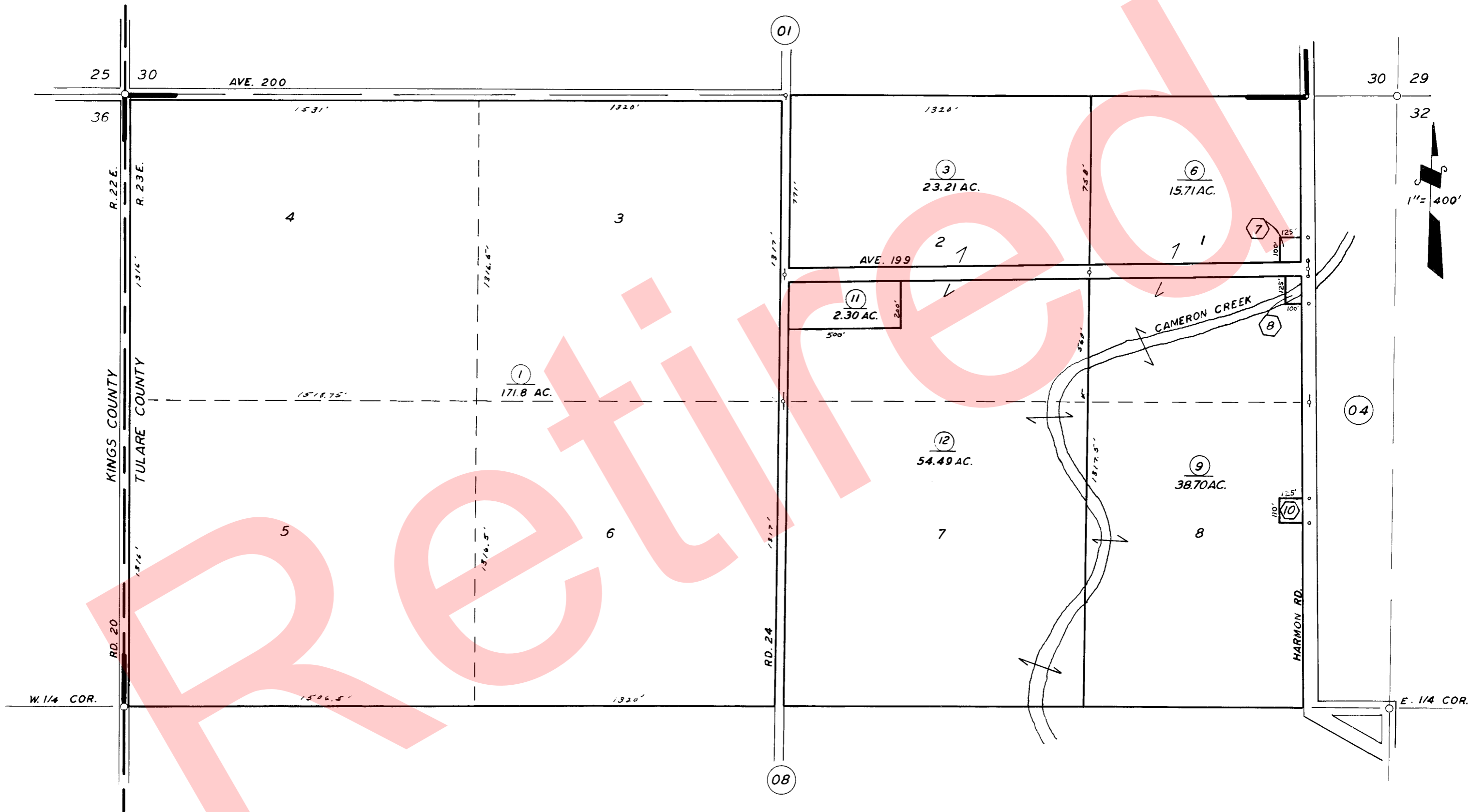


GOV'T. FRL. NE 1/4 & POR. NE 1/4, SEC. 31, T. 20 S., R. 23 E., M. D. B. & M.

TAX CODE AREA **225-09**
155-003



POR. WAUKENA COLONY TR. R.M. 7-6

ASSESSOR'S MAPS BK. 225, PG. 09.

COUNTY OF TULARE, CALIF.

NOTE -- ASSESSOR'S BLOCK NUMBERS SHOWN IN ELLIPSES
ASSESSOR'S PARCEL NUMBERS SHOWN IN CIRCLES

