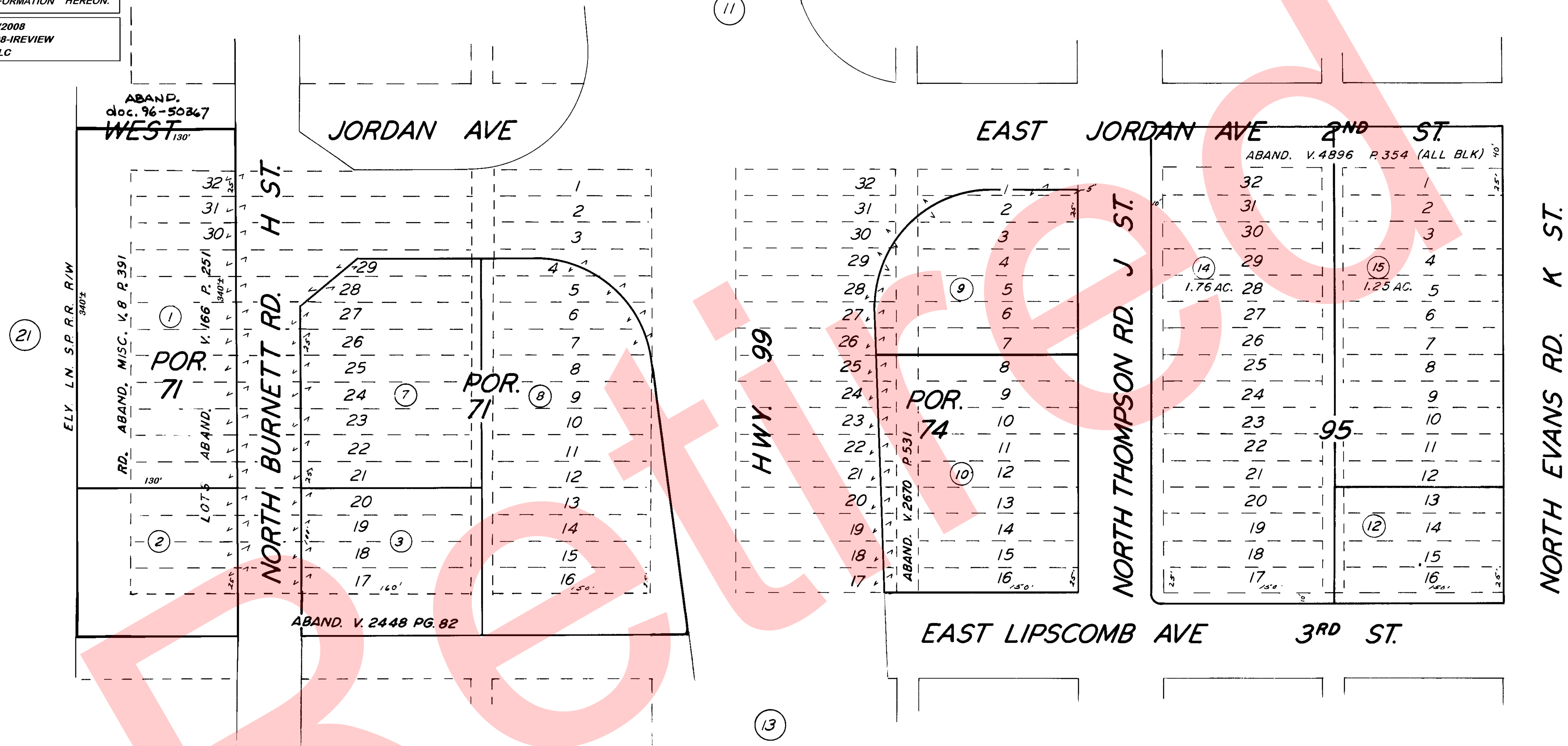


**DISCLAIMER**  
THIS MAP WAS PREPARED FOR LOCAL PROPERTY ASSESSMENT PURPOSES ONLY. THE PARCELS SHOWN HEREON MAY NOT COMPLY WITH STATE AND LOCAL SUBDIVISION ORDINANCES. NO LIABILITY IS ASSUMED FOR THE USE OF THE INFORMATION HEREON.

REVISED: 8/5/2008  
REASON: 2008-IREVIEW  
CAD TECH: JLC

**S1/2 OF NE1/4 OF NW1/4 SEC.31 T.21S., R.25E., M.D.B.&M.**

TAX CODE AREA  
**147-009 230-12**



**POR. CENTRAL LAND CO.'S ADD. TO TIPTON R.M. 8-47**

NOTE --- ASSESSOR'S BLOCK NUMBERS SHOWN IN ELLIPSES  
ASSESSOR'S PARCEL NUMBERS SHOWN IN CIRCLES

