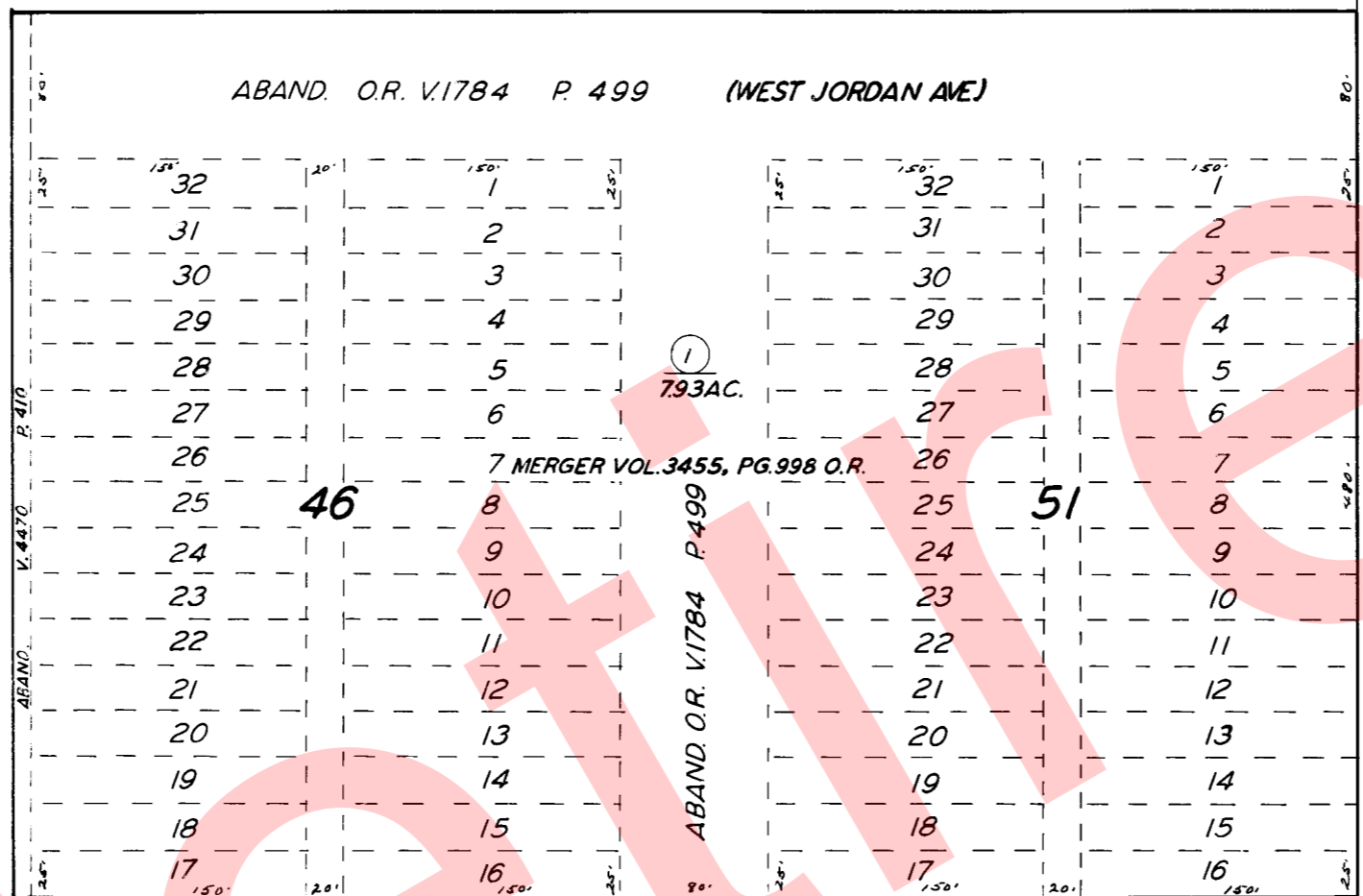


23

22

12

NORTH BERRY RD. E ST.



NORTH HAMLIN RD. G ST.

WEST LIPSCOMB AVE 3RD ST.

20

POR. OF TIPTON R.M. 8-47

ASSESSOR'S MAPS BK. 230, PG. 21.

COUNTY OF TULARE, CALIF.

NOTE — ASSESSOR'S BLOCK NUMBERS SHOWN IN ELLIPSES
ASSESSOR'S PARCEL NUMBERS SHOWN IN CIRCLES

