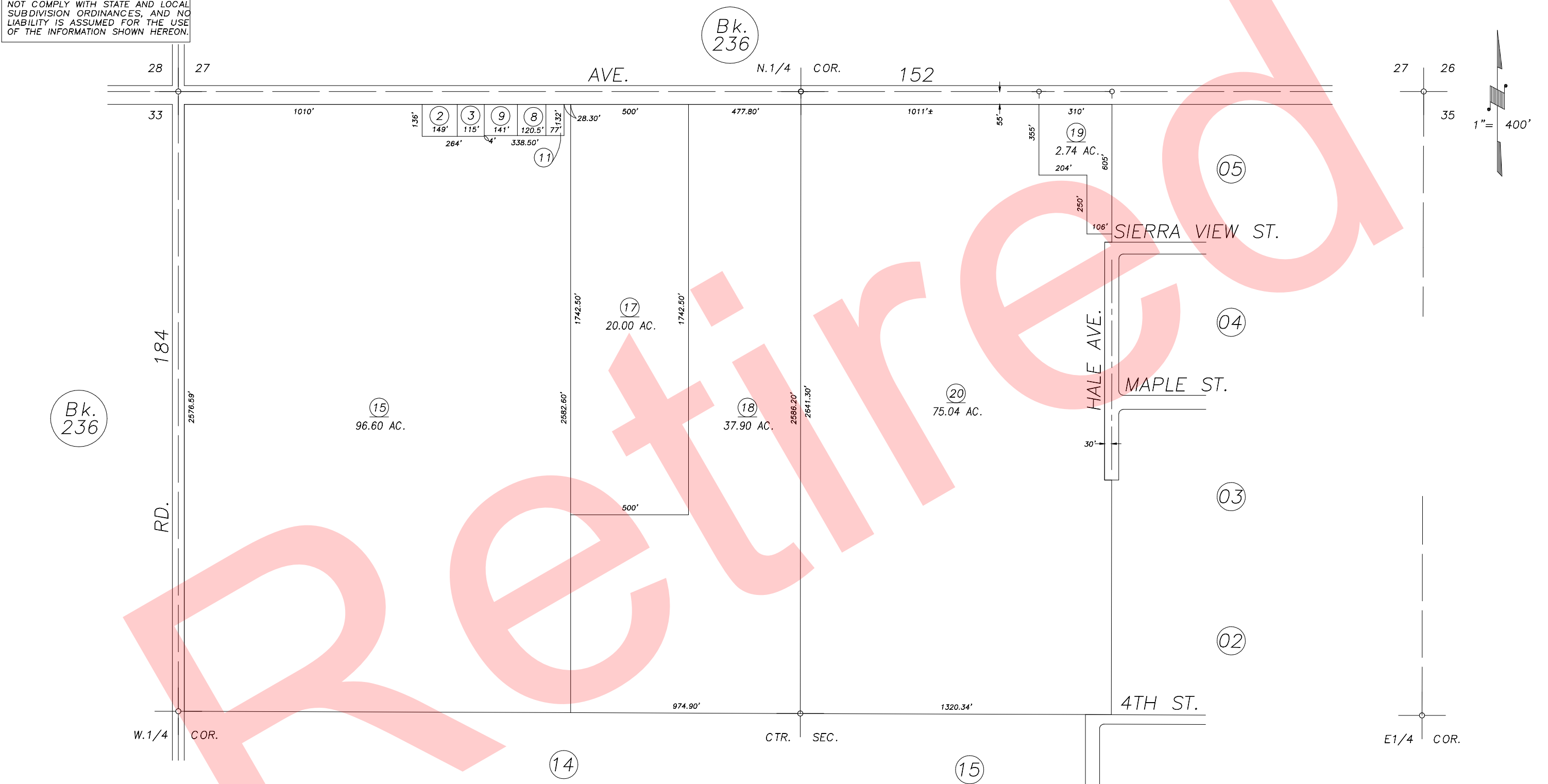


**DISCLAIMER**  
 THIS MAP WAS PREPARED FOR LOCAL PROPERTY ASSESSMENT PURPOSES ONLY AND THE PARCELS SHOWN HEREON MAY NOT COMPLY WITH STATE AND LOCAL SUBDIVISION ORDINANCES, AND NO LIABILITY IS ASSUMED FOR THE USE OF THE INFORMATION SHOWN HEREON.

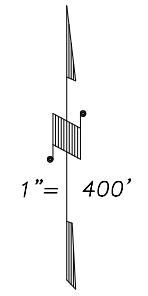
POR. N 1/2 SECTION 34, T.21S., R.26E., M.D.B. & M.

Tax Area Code 237-01  
 125-000



Bk. 236

Bk. 236



VICINITY OF POPLAR  
 ASSESSOR'S MAPS BK.237 , PG.01  
 COUNTY OF TULARE, CALIFORNIA, U.S.A.

NOTE: Assessor's Parcel Numbers Shown in Circles  
 Assessor's Block Numbers Shown in Elipses

①	①23	2005-0071350	11/01/2007	CBT
		REVISION	DATE	TECH