

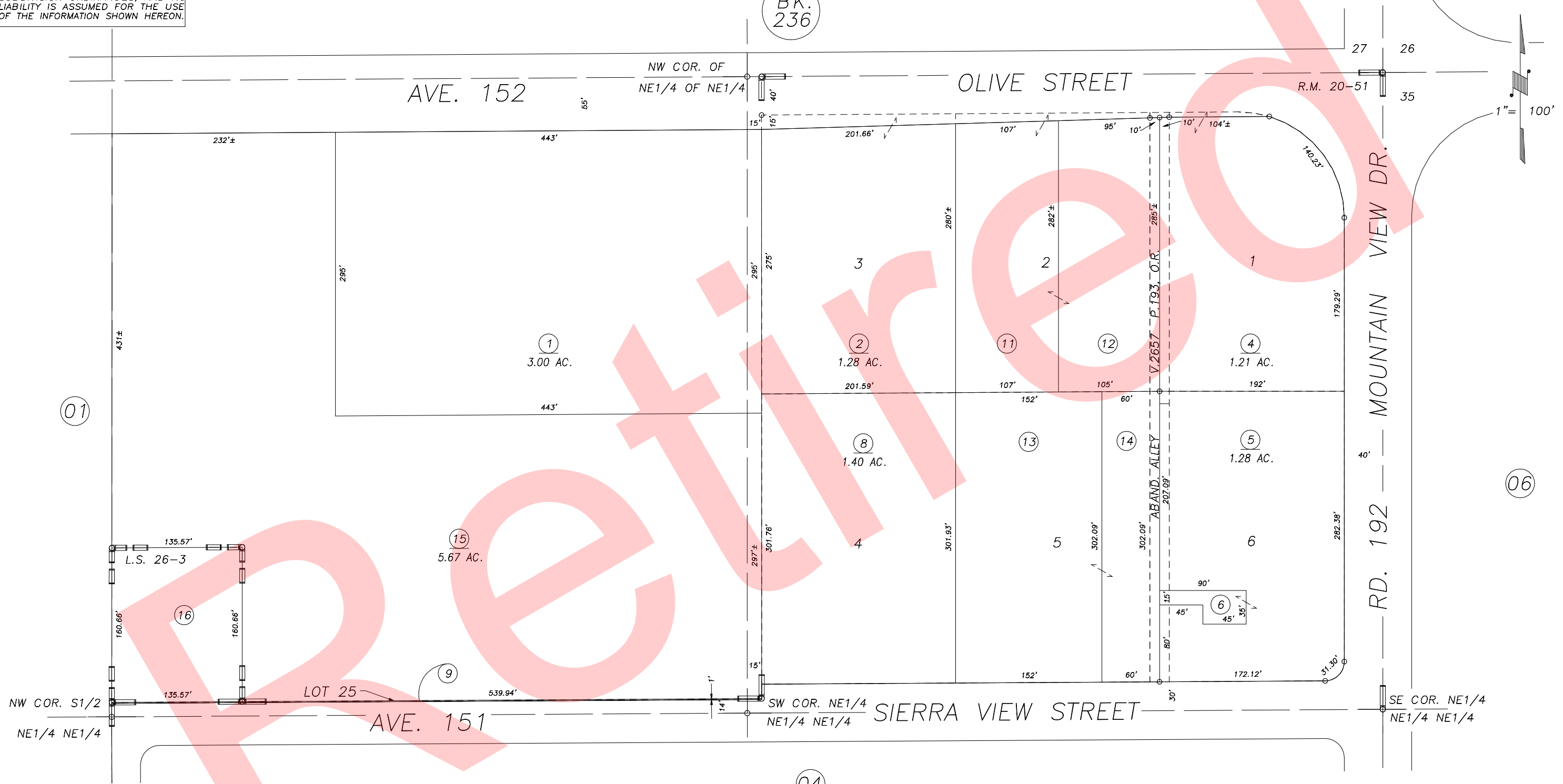
**DISCLAIMER**  
 THIS MAP WAS PREPARED FOR LOCAL PROPERTY ASSESSMENT PURPOSES ONLY AND THE PARCELS SHOWN HEREON MAY NOT COMPLY WITH STATE AND LOCAL SUBDIVISION ORDINANCES, AND NO LIABILITY IS ASSUMED FOR THE USE OF THE INFORMATION SHOWN HEREON.

N1/2 OF NE1/4 OF NE1/4 SEC.34, T.21S., R.26E., M.D.B.&M.

Tax Area Codes 237-05

125-007  
 125-010

BK. 236



POR. TRACT NO. 162, R.M. 20-51  
 RECORD OF SURVEY, L.S. 26-3  
 POR. RECORD OF SURVEY, L.S. 26-27 (E. LN. SEC.34, ETC.)

VICINITY OF POPLAR  
 ASSESSOR'S MAPS BK.237 , PG.05  
 COUNTY OF TULARE, STATE OF CALIFORNIA, U.S.A.

NOTE: Assessor's Parcel Numbers Shown in Circles (1) (123) Assessor's Block Numbers Shown in Elipses

2000-0075762	07/11/2000	RJL
REVISION	DATE	TECH