

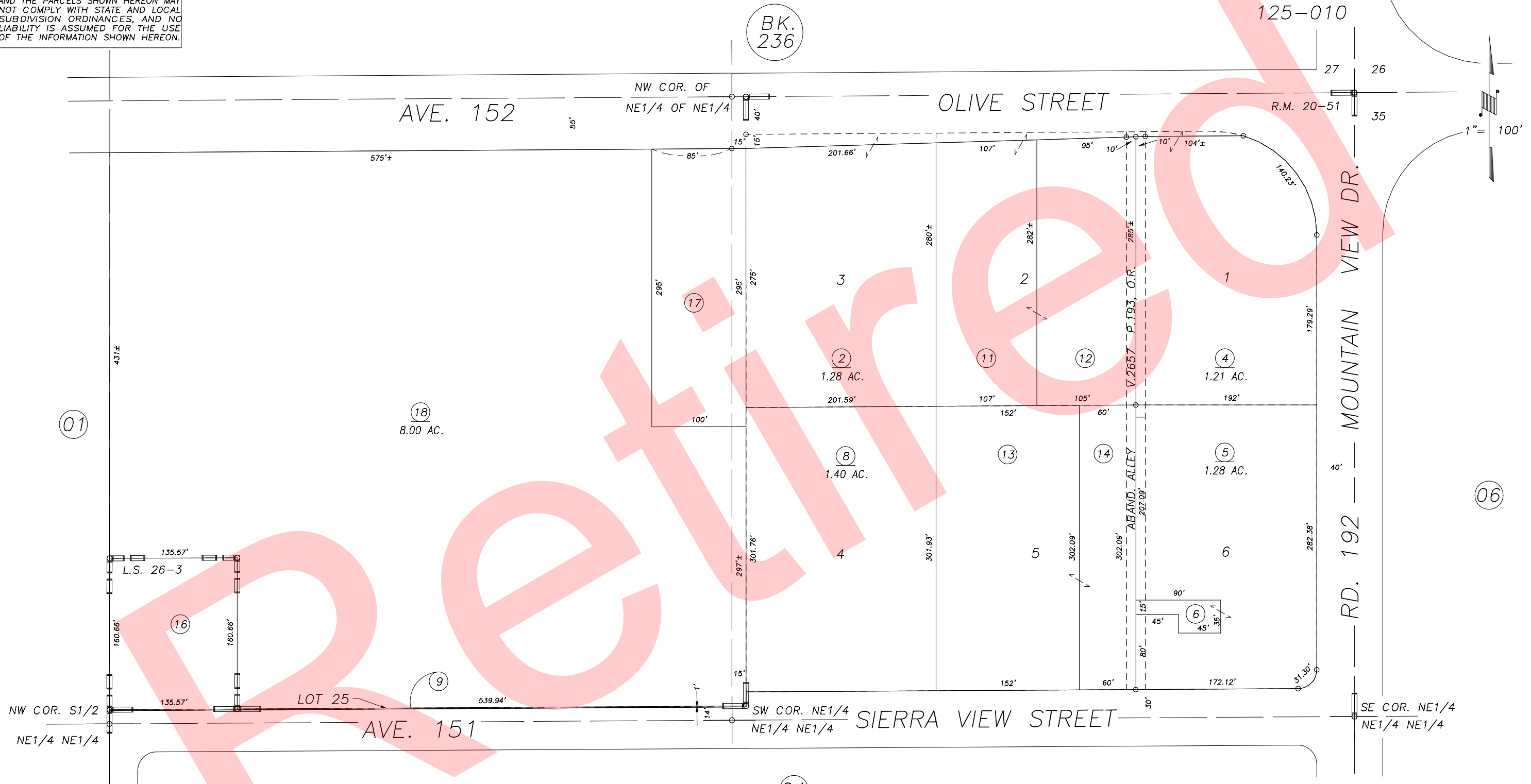
DISCLAIMER
 THIS MAP WAS PREPARED FOR LOCAL PROPERTY ASSESSMENT PURPOSES ONLY AND THE PARCELS SHOWN HEREON MAY NOT COMPLY WITH STATE AND LOCAL SUBDIVISION ORDINANCES, AND NO LIABILITY IS ASSUMED FOR THE USE OF THE INFORMATION SHOWN HEREON.

N1/2 OF NE1/4 OF NE1/4 SEC.34, T.21S., R.26E., M.D.B.&M.

Tax Area Codes 237-05

125-007
 125-010

BK. 236



POR. TRACT NO. 162, R.M. 20-51
 RECORD OF SURVEY, L.S. 26-3
 POR. RECORD OF SURVEY, L.S. 26-27 (E. LN. SEC.34, ETC.)

VICINITY OF POPLAR
 ASSESSOR'S MAPS BK.237 , PG.05
 COUNTY OF TULARE, CALIFORNIA, U.S.A.

NOTE: Assessor's Parcel Numbers Shown in Circles (1) (123) Assessor's Block Numbers Shown in Elipses

2006-0041150	03/03/2014	ASG
REVISION	DATE	TECH