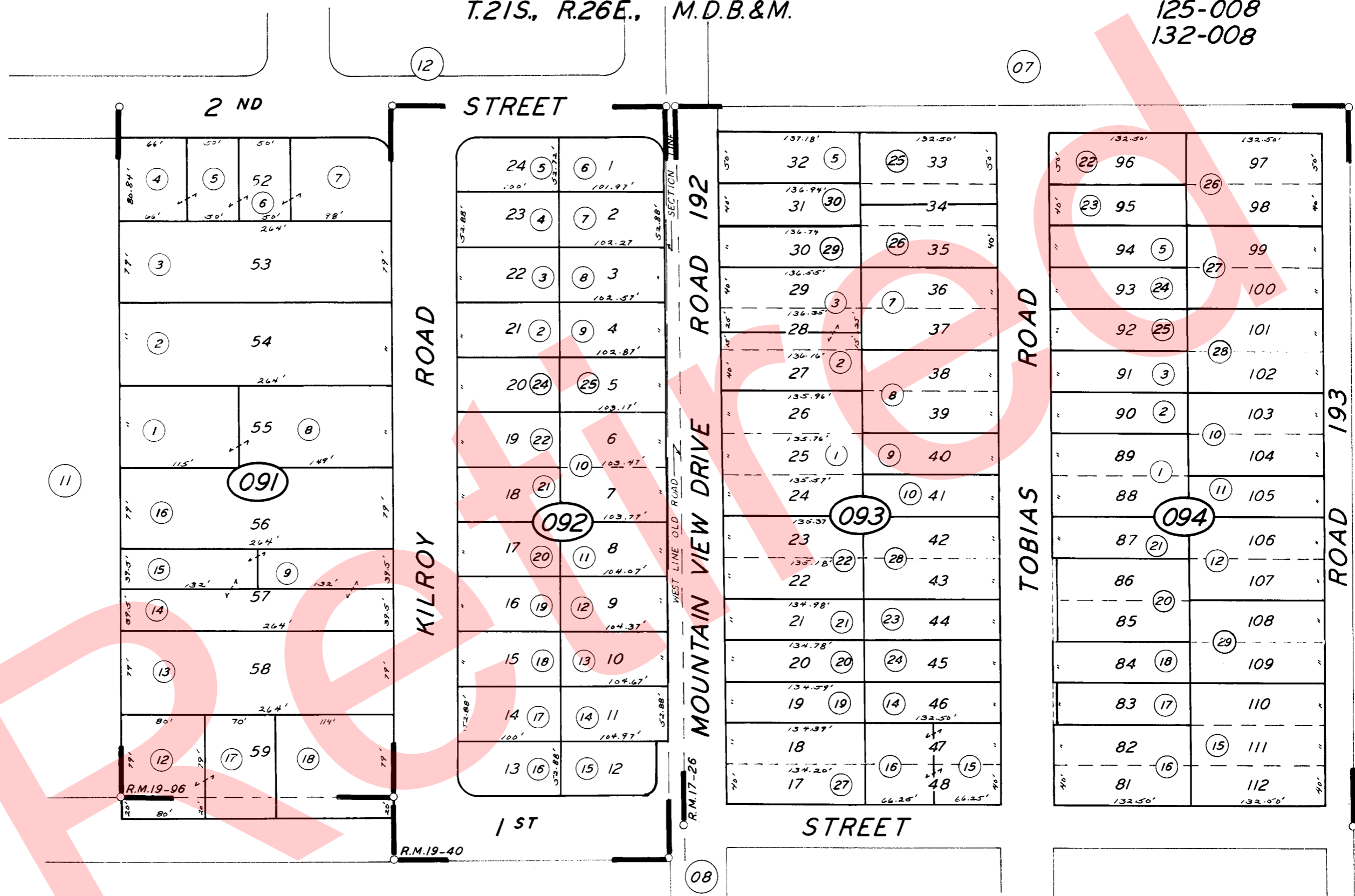


POR. N 1/2 OF SE 1/4 OF SE 1/4 SEC. 34, & POR. N 1/2 OF SW 1/4 OF SW 1/4 SEC. 35,  
T.21S., R.26E., M.D.B.&M.

TAX CODE AREA **237-09**  
125-008  
132-008



POR. OSTERHOUT & SHARP TRACT R.M. 17-26

TRACT NO. 3 (SLATER SUB.) R.M. 19-40

POR. TRACT NO. 50 R.M. 19-96

ASSESSOR'S MAPS BK. 237, PG. 09.

COUNTY OF TULARE, CALIF.

NOTE - ASSESSOR'S BLOCK NUMBERS SHOWN IN ELLIPSES  
ASSESSOR'S PARCEL NUMBERS SHOWN IN CIRCLES

