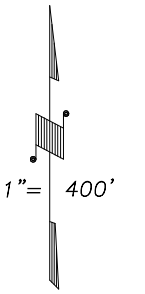
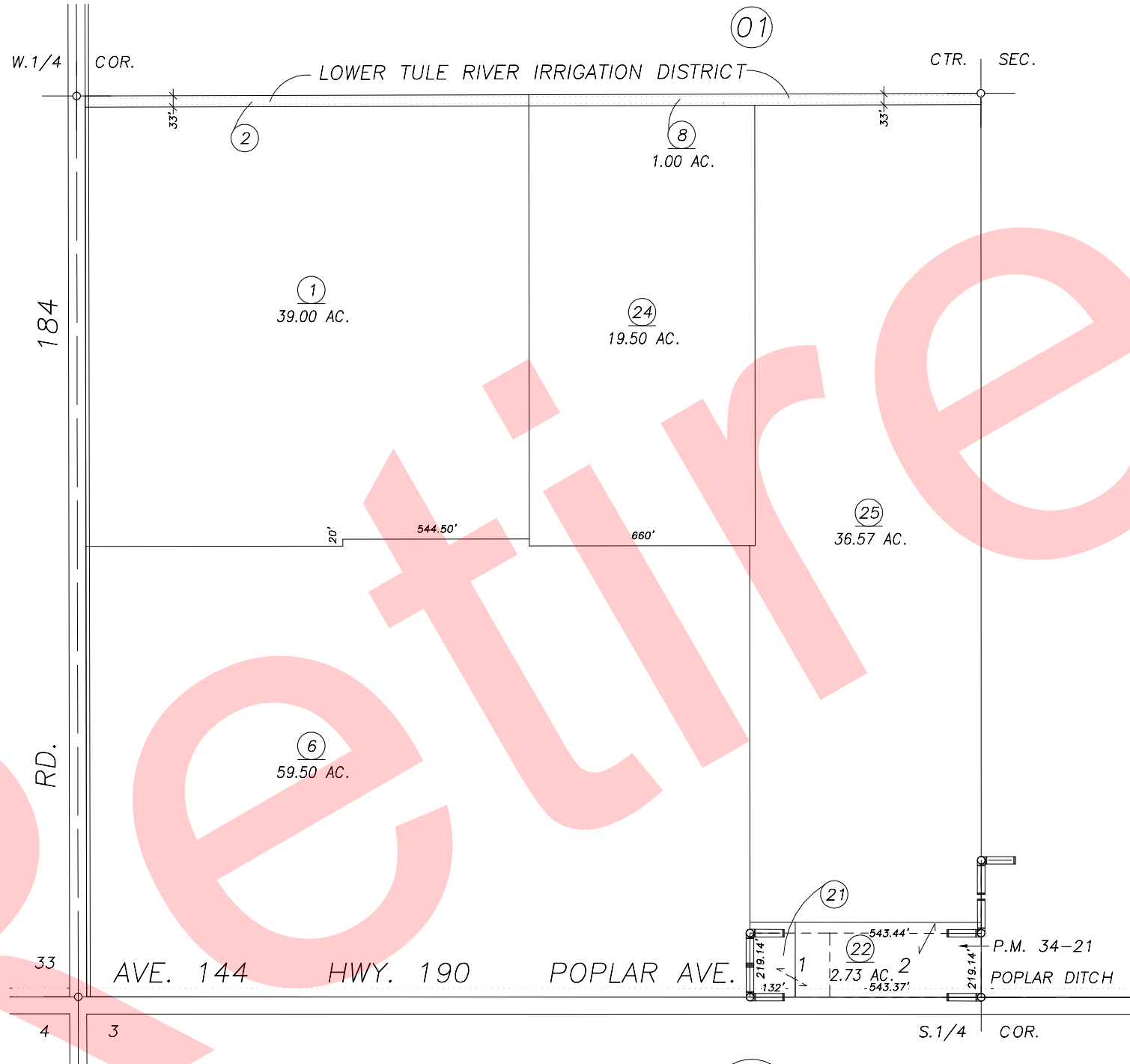


DISCLAIMER
 THIS MAP WAS PREPARED FOR LOCAL PROPERTY ASSESSMENT PURPOSES ONLY AND THE PARCELS SHOWN HEREON MAY NOT COMPLY WITH STATE AND LOCAL SUBDIVISION ORDINANCES, AND NO LIABILITY IS ASSUMED FOR THE USE OF THE INFORMATION SHOWN HEREON.

POR. S 1/2 SECTION 34, T.21S., R.26E., M.D.B. & M.

Tax Area Code 237-14
 125-000
 125-006



REVISION	DATE	BY
2001-0047649	9/5/2001	KMS

POR. PARCEL MAP 3319, P.M. 34-21

ASSESSOR'S MAPS BK. 237, PG. 14 .
 COUNTY OF TULARE, CALIF.

NOTE: Assessor's Block Numbers Shown in Ellipses
 Assessor's Parcel Numbers Shown in Circles

02/03