

BK. 248

23

24

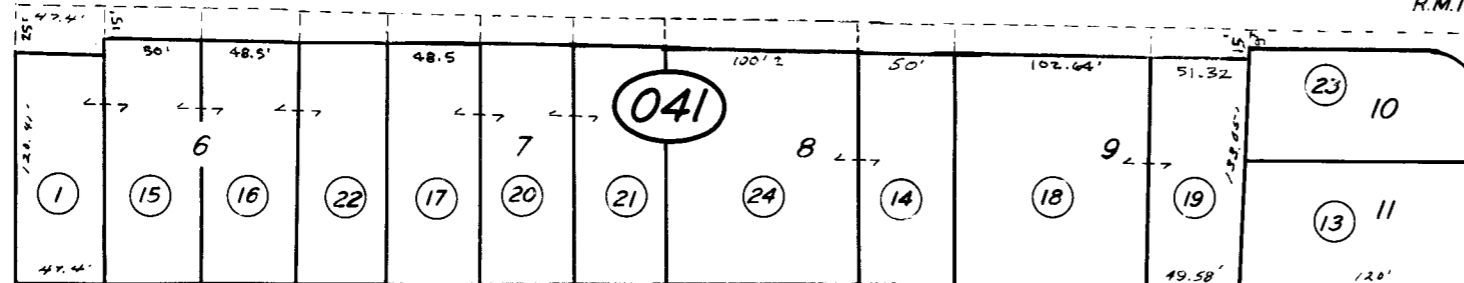
NW COR. OF SEC.

HENDERSON

R.M. 17-10 R.M. 18-76

AVE.

26



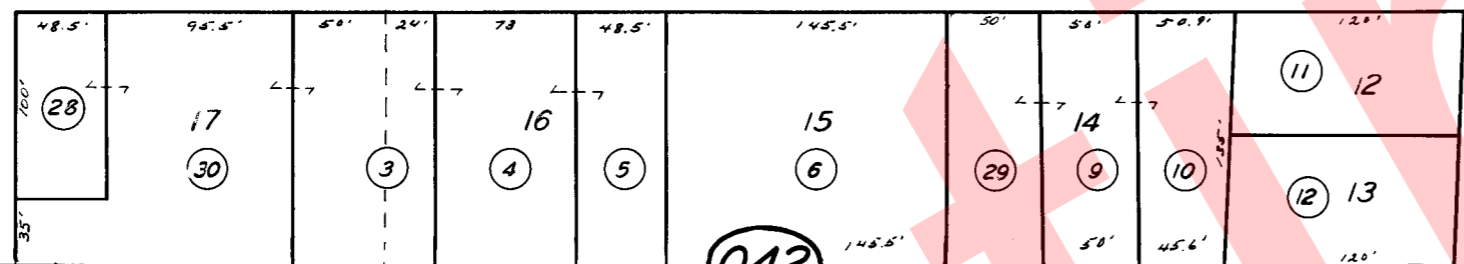
LAUREL

AVE.

ST.

ST.

BK. 252

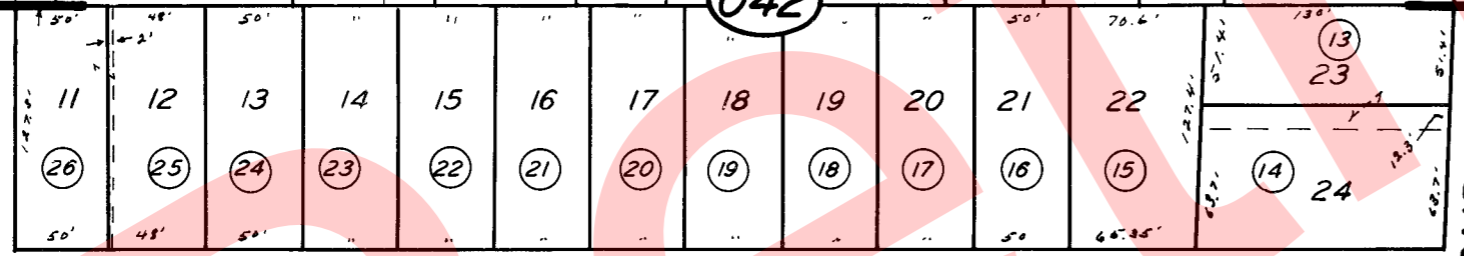


DANNER

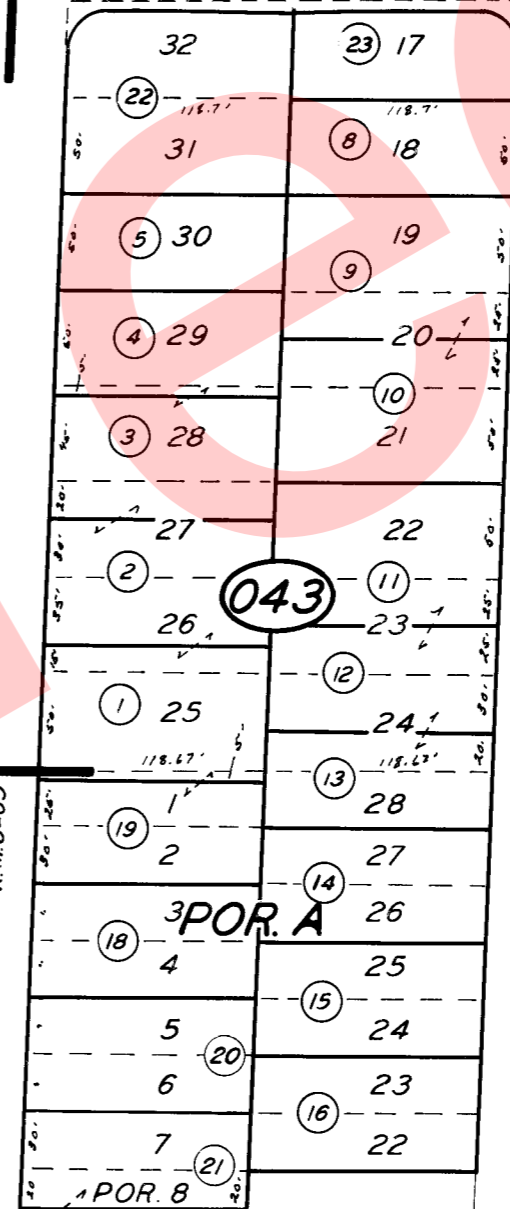
AVE.

LIME

SECOND

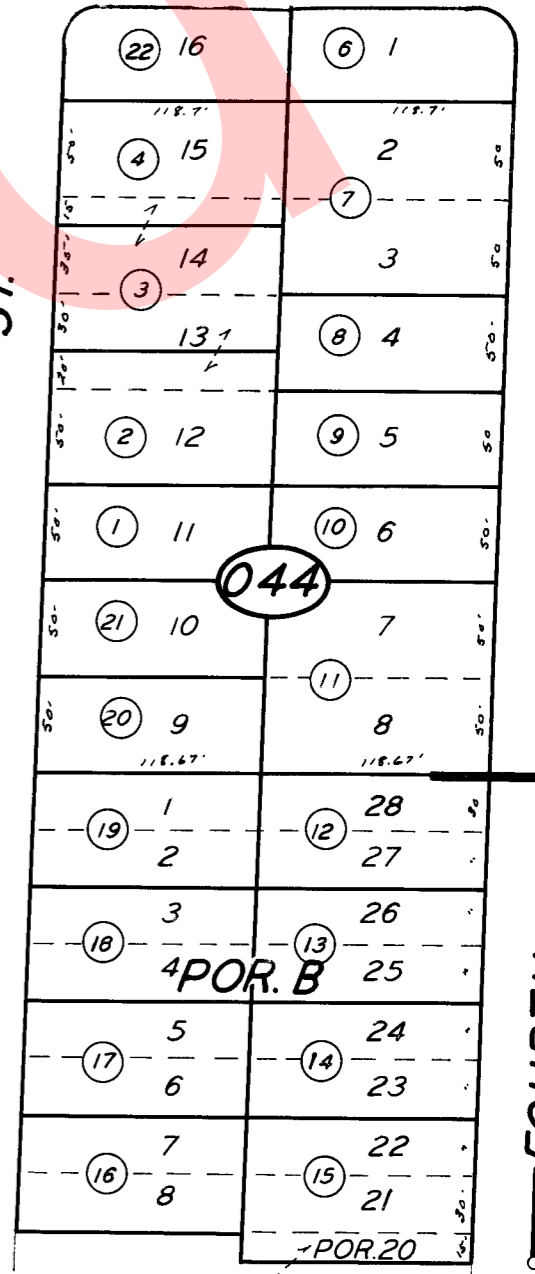


03



ST.

THIRD



ST.

FOURTH

1" = 100'

05

SIERRA VIEW TRACT R.M. 18-76  
 POR. STURMS HOME TR. R.M. 17-10  
 POR. JOHN DANNER TR. R.M. 18-25  
 POR. ZALUD & WHITE ADD. R.M. 8-65

CITY OF PORTERVILLE  
 ASSESSOR'S MAPS BK. 253, PG. 04.  
 COUNTY OF TULARE, CALIF.

NOTE — ASSESSOR'S BLOCK NUMBERS SHOWN IN ELLIPSES  
 ASSESSOR'S PARCEL NUMBERS SHOWN IN CIRCLES