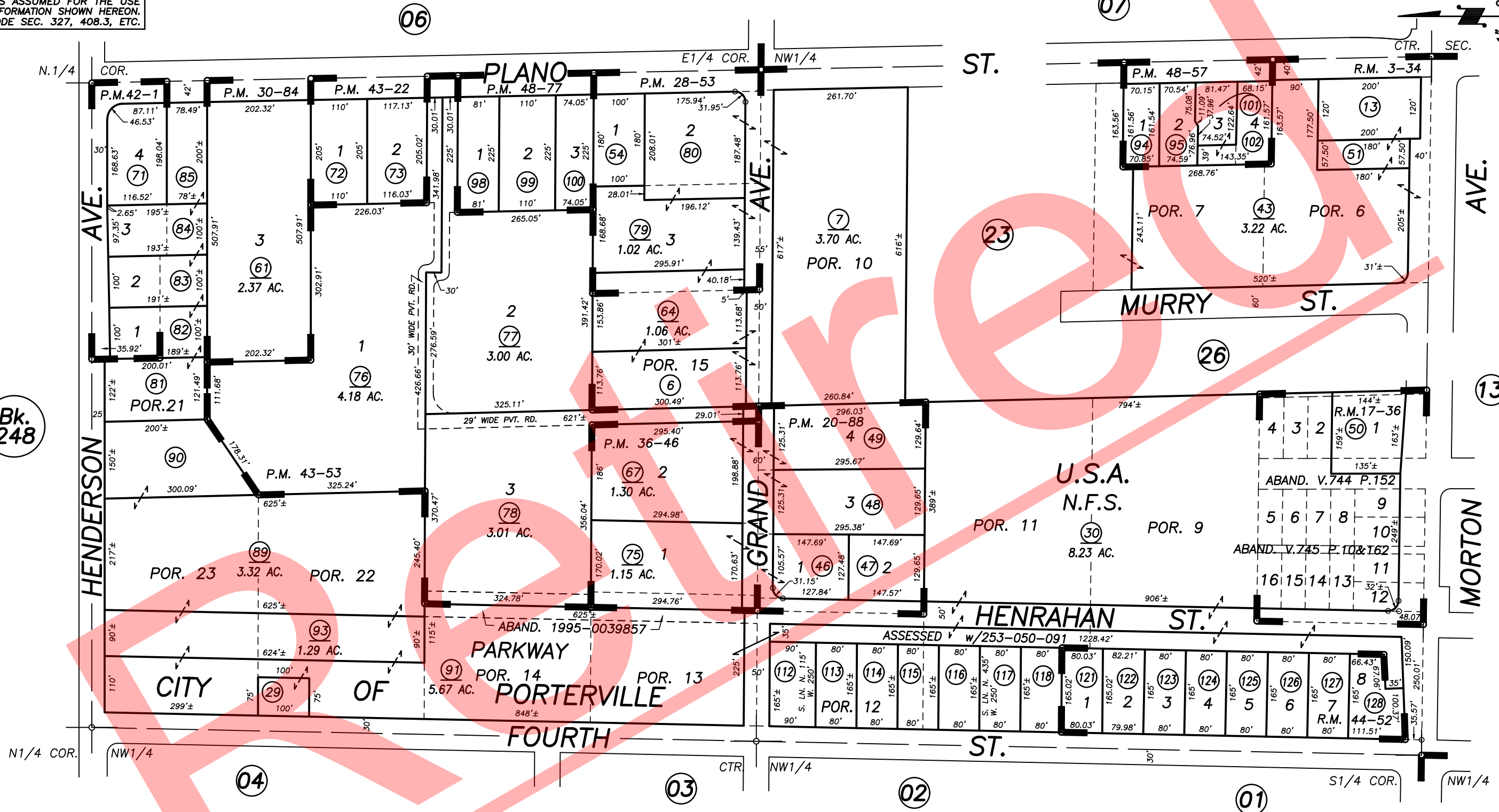


DISCLAIMER
 THIS MAP WAS PREPARED FOR LOCAL PROPERTY ASSESSMENT PURPOSES ONLY AND THE PARCELS SHOWN HEREON MAY NOT COMPLY WITH STATE AND LOCAL SUBDIVISION ORDINANCES, AND NO LIABILITY IS ASSUMED FOR THE USE OF THE INFORMATION SHOWN HEREON. R & T CODE SEC. 327, 408.3, ETC.

POR. NW1/4 SEC.25, T.21S., R.27E., M.D.B.&M.

Tax Area Codes
 004-000 253-05
 004-150



POR. PIONEER LAND CO. 1ST SUB., R.M. 3-34
 WILLIAM DUNCAN SUB., R.M. 17-36
 PARCEL MAP NO. 1987, P.M. 20-88
 PARCEL MAP NO. 2752, P.M. 28-53
 PARCEL MAP NO. 2983, P.M. 30-84
 PARCEL MAP NO. 3543, P.M. 36-46
 PARCEL MAP NO. 4097, P.M. 42-1

PARCEL MAP NO. 4218, P.M. 43-22
 PARCEL MAP NO. 4249, P.M. 43-53
 PARCEL MAP NO. 4752, P.M. 48-57
 PARCEL MAP NO. 4772, P.M. 48-77
 AMENDED 4TH STREET APARTMENTS, PHASE TWO, R.M. 44-52

CITY OF PORTERVILLE
 ASSESSOR'S MAPS BK. 253 , PG. 05
 COUNTY OF TULARE, CALIFORNIA, U.S.A.

NOTE: Assessor's Parcel Numbers Shown in Circles
 Assessor's Block Numbers Shown in Ellipses

2020-0043146	09/02/2020	WAC
REVISION	DATE	TECH