

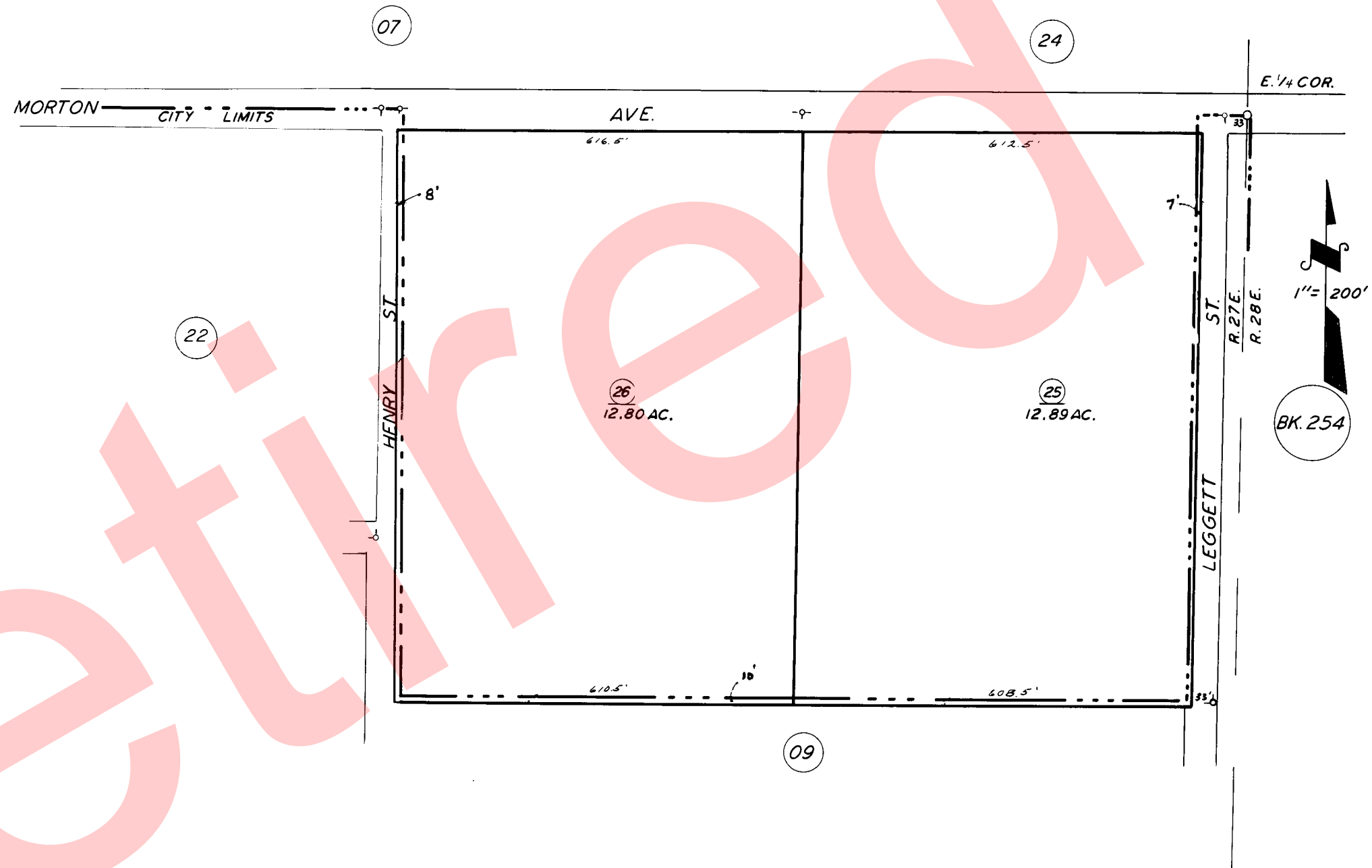
NLY. POR. SE 1/4 SEC. 25, T. 21 S., R. 27 E., M. D. B. & M.

TAX CODE AREA

253-08

4-000

126-001



CITY OF PORTERVILLE
 ASSESSOR'S MAPS BK. 253, PG. 08
 COUNTY OF TULARE, CALIF.

NOTE -- ASSESSOR'S BLOCK NUMBERS SHOWN IN ELLIPSES
 ASSESSOR'S PARCEL NUMBERS SHOWN IN CIRCLES

3-1-64
 4-11-63 LN

