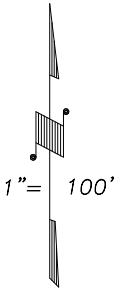


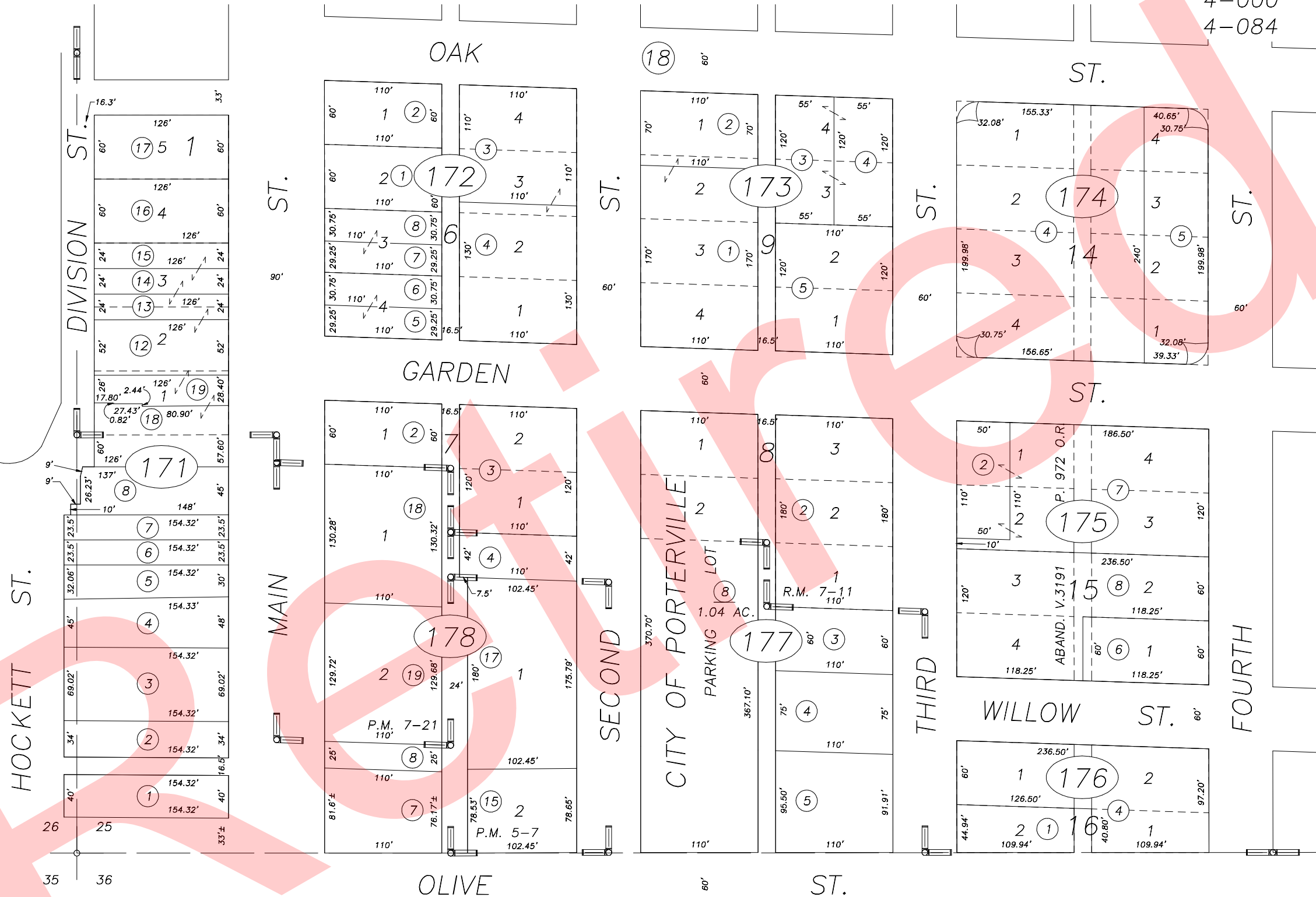
**DISCLAIMER**  
 THIS MAP WAS PREPARED FOR LOCAL PROPERTY ASSESSMENT PURPOSES ONLY AND THE PARCELS SHOWN HEREON MAY NOT COMPLY WITH STATE AND LOCAL SUBDIVISION ORDINANCES, AND NO LIABILITY IS ASSUMED FOR THE USE OF THE INFORMATION SHOWN HEREON.

SLY. POR. SW 1/4 OF SW 1/4 SEC. 25, T.21S., R.27E., M.D.B. & M. Tax Area Code 253-17

4-000  
 4-084



Bk. 252



1999-0012206	7/20/01	PHN
REVISION	DATE	BY

POR. CITY OF PORTERVILLE, R.M. 7-11  
 PARCEL MAP 407, P.M. 5-7  
 PARCEL MAP 621, P.M. 7-21

Bk. 261

CITY OF PORTERVILLE  
 ASSESSOR'S MAPS BK. 253, PG. 17.  
 COUNTY OF TULARE, CALIF.

NOTE: Assessor's Block Numbers Shown in Ellipses  
 Assessor's Parcel Numbers Shown in Circles

00/01