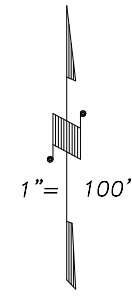


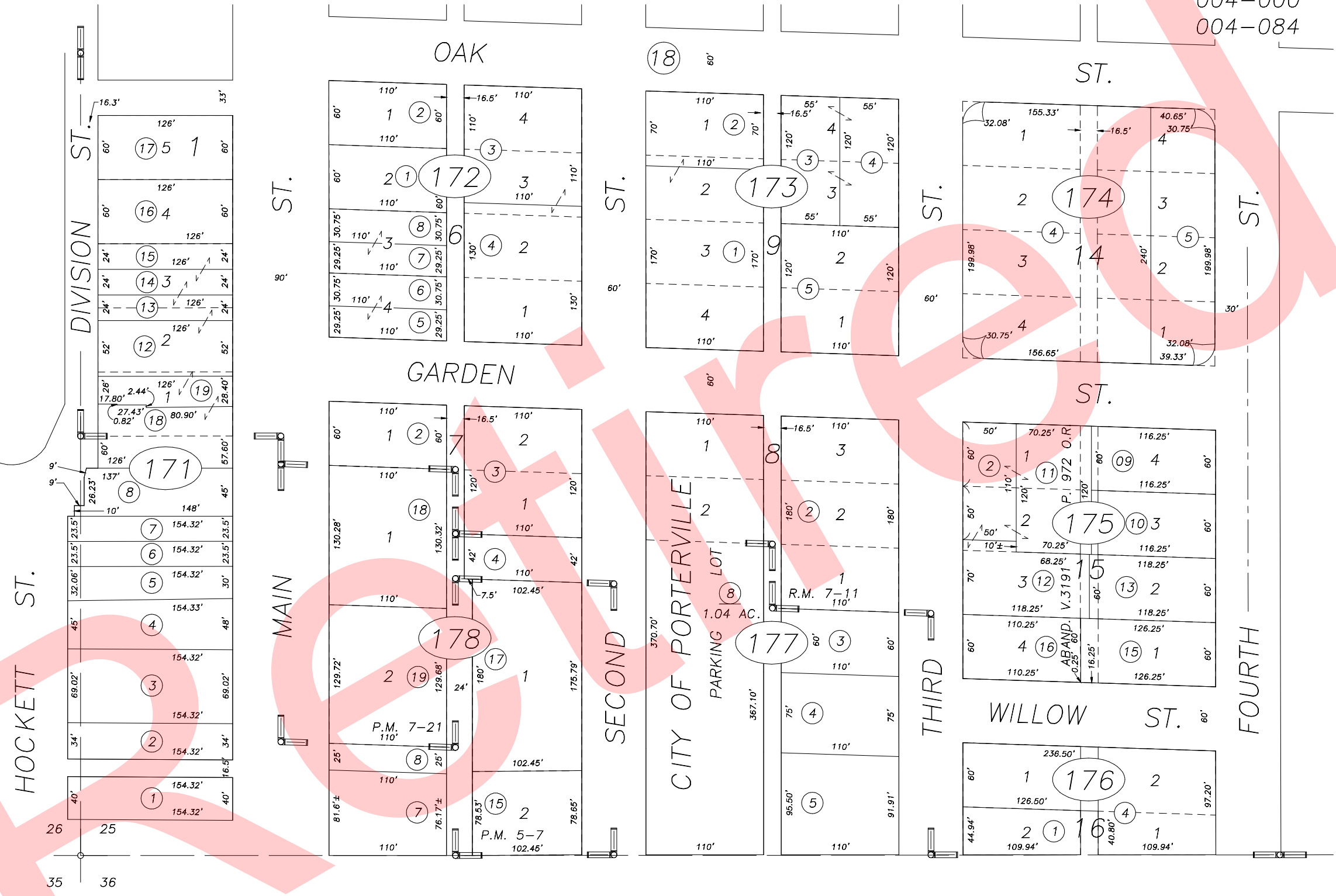
DISCLAIMER
 THIS MAP WAS PREPARED FOR LOCAL PROPERTY ASSESSMENT PURPOSES ONLY AND THE PARCELS SHOWN HEREON MAY NOT COMPLY WITH STATE AND LOCAL SUBDIVISION ORDINANCES, AND NO LIABILITY IS ASSUMED FOR THE USE OF THE INFORMATION SHOWN HEREON.

SLY. POR. SW 1/4 OF SW 1/4 SEC. 25, T.21S., R.27E., M.D.B. & M. Tax Area Code 253-17

004-000
 004-084



Bk. 252



POR. CITY OF PORTERVILLE, R.M. 7-11
 PARCEL MAP NO. 407, P.M. 5-7
 PARCEL MAP NO. 621, P.M. 7-21

Bk. 261

CITY OF PORTERVILLE
 ASSESSOR'S MAPS BK.253 , PG.17
 COUNTY OF TULARE, CALIFORNIA, U.S.A.

NOTE: Assessor's Parcel Numbers Shown in Circles (1) (123) Assessor's Block Numbers Shown in Elipses

| | | |
|--------------|------------|------|
| 2006-0127688 | 09/12/2007 | PHN |
| REVISION | DATE | TECH |