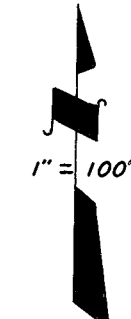
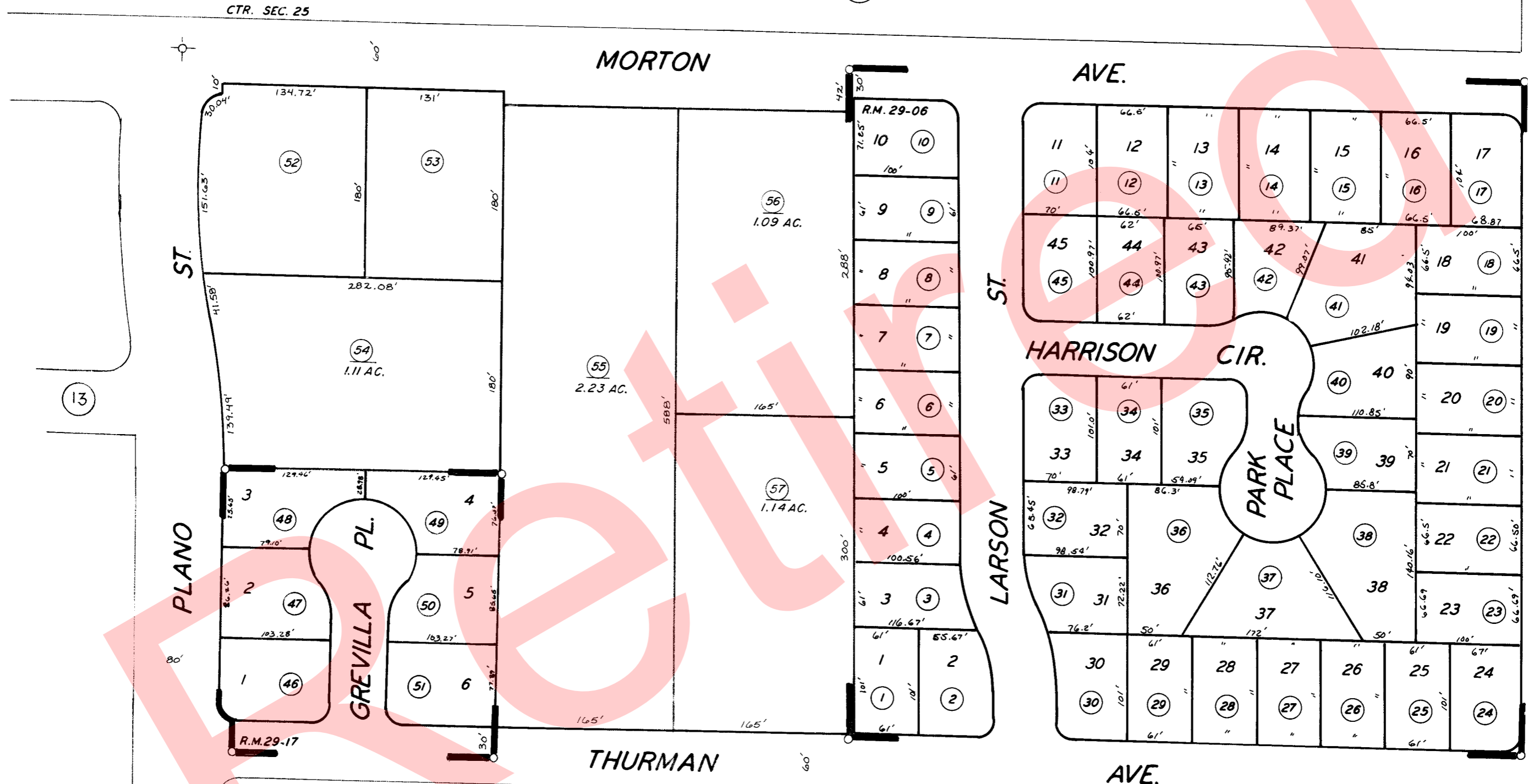


07



GREVILLA COURT TRACT... R.M. 29-17  
CITRUS HEIGHTS... R.M. 29-06

12 CITY OF PORTERVILLE  
ASSESSOR'S MAPS BK. 253 PG. 22  
COUNTY OF TULARE, CALIF.

NOTE-ASSESSOR'S BLOCK NUMBERS SHOWN IN ELIPSES  
ASSESSOR'S PARCEL NUMBERS SHOWN IN CIRCLES