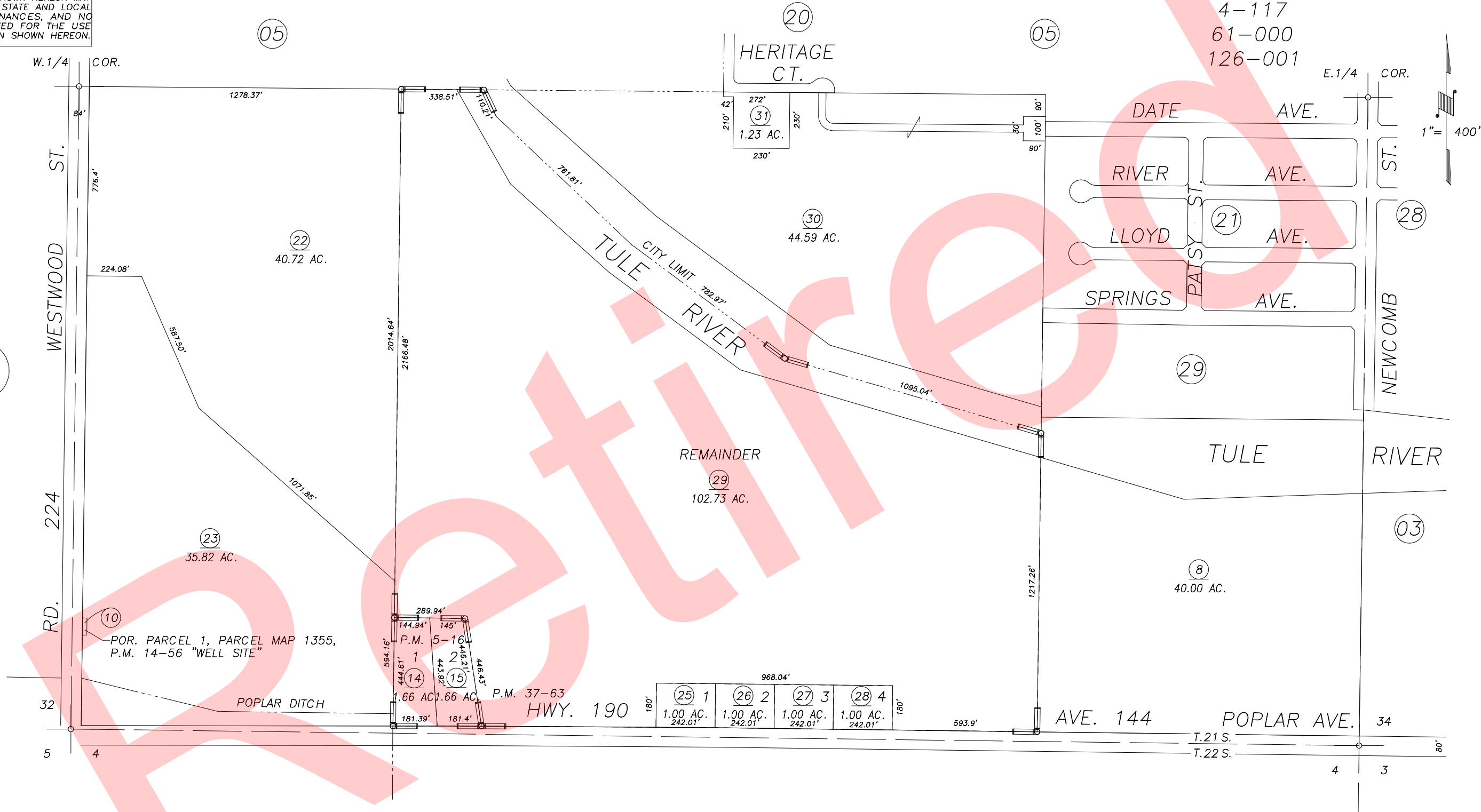


DISCLAIMER
 THIS MAP WAS PREPARED FOR LOCAL PROPERTY ASSESSMENT PURPOSES ONLY AND THE PARCELS SHOWN HEREON MAY NOT COMPLY WITH STATE AND LOCAL SUBDIVISION ORDINANCES, AND NO LIABILITY IS ASSUMED FOR THE USE OF THE INFORMATION SHOWN HEREON.

POR. S 1/2 SECTION 33, T.21S., R.27E., M.D.B. & M.

Tax Area Code 259-04

4-014
 4-117
 61-000
 126-001



Bk. 240

Bk. 302

R.M. 38-58	JGM	BY
REVISION	DATE	
	3/30/00	

PARCEL MAP 416, P.M. 5-16
 POR. PARCEL MAP 1355, P.M. 14-56
 PARCEL MAP 3660, P.M. 37-63

CITY OF PORTERVILLE
 ASSESSOR'S MAPS BK. 259, PG. 04.
 COUNTY OF TULARE, CALIF.

NOTE: Assessor's Block Numbers Shown in Ellipses
 Assessor's Parcel Numbers Shown in Circles