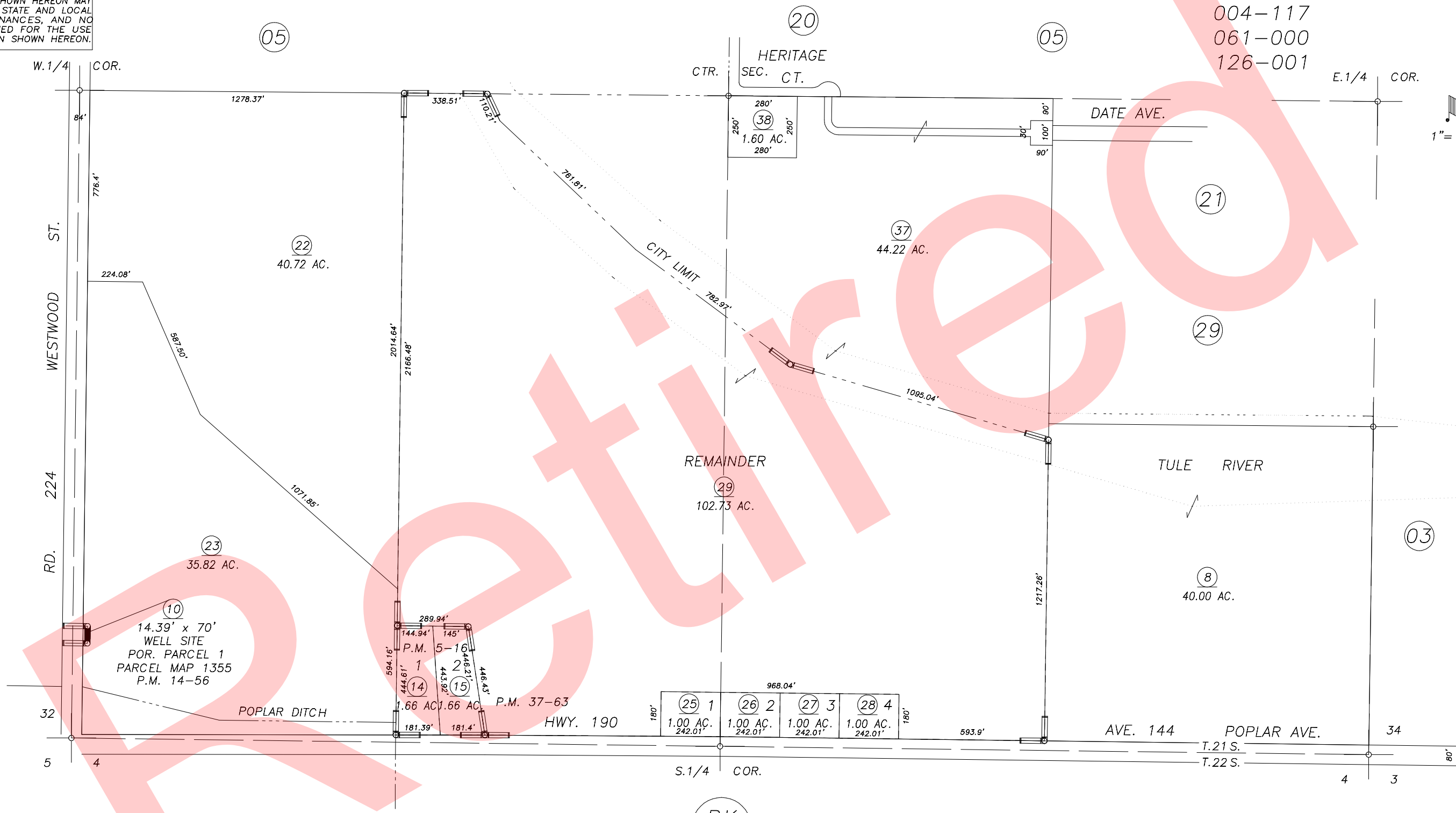
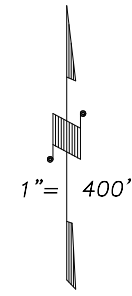


DISCLAIMER
 THIS MAP WAS PREPARED FOR LOCAL PROPERTY ASSESSMENT PURPOSES ONLY AND THE PARCELS SHOWN HEREON MAY NOT COMPLY WITH STATE AND LOCAL SUBDIVISION ORDINANCES, AND NO LIABILITY IS ASSUMED FOR THE USE OF THE INFORMATION SHOWN HEREON.

POR. S1/2 SEC.33, T.21S., R.27E., M.D.B.&M.

Tax Area Code 259-04

004-014
 004-117
 061-000
 126-001



PARCEL MAP 416, P.M. 5-16
 POR. PARCEL MAP 1355, P.M. 14-56
 PARCEL MAP 3660, P.M. 37-63

VICINITY OF PORTERVILLE
 ASSESSOR'S MAPS BK.259 , PG.04
 COUNTY OF TULARE, CALIFORNIA, U.S.A.

NOTE: Assessor's Parcel Numbers Shown in Circles (1) (123)
 Assessor's Block Numbers Shown in Ellipses

FIX CITY LIMIT	08/01/2002	KMS
REVISION	DATE	TECH