

70  
71  
72

N 1/2 SEC. 33, T.21S., R.27E., M.D.B. & M.

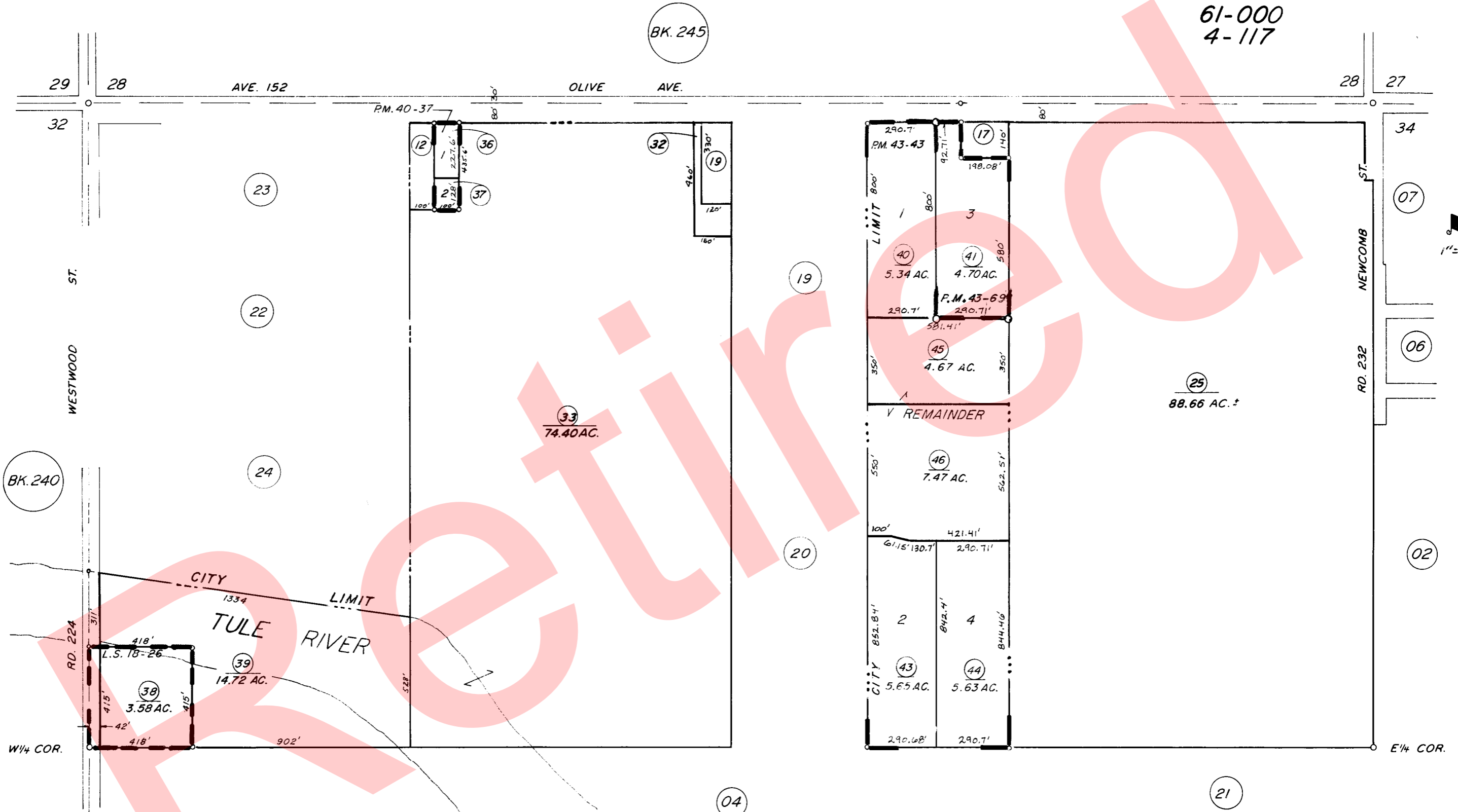
TAX CODE AREA 259-05

126-001

61-000

4-117

BK. 245



RECORD OF SURVEY L.S. 18-26  
 PARCEL MAP 3933 P.M. 40-37  
 PARCEL MAP 4265 P.M. 43-69  
 PARCEL MAP 4239 P.M. 43-43

ASSESSOR'S MAPS BK. 259, PG. 05  
 COUNTY OF TULARE, CALIF.

NOTE - ASSESSOR'S BLOCK NUMBERS SHOWN IN ELLIPSES  
 ASSESSOR'S PARCEL NUMBERS SHOWN IN CIRCLES

