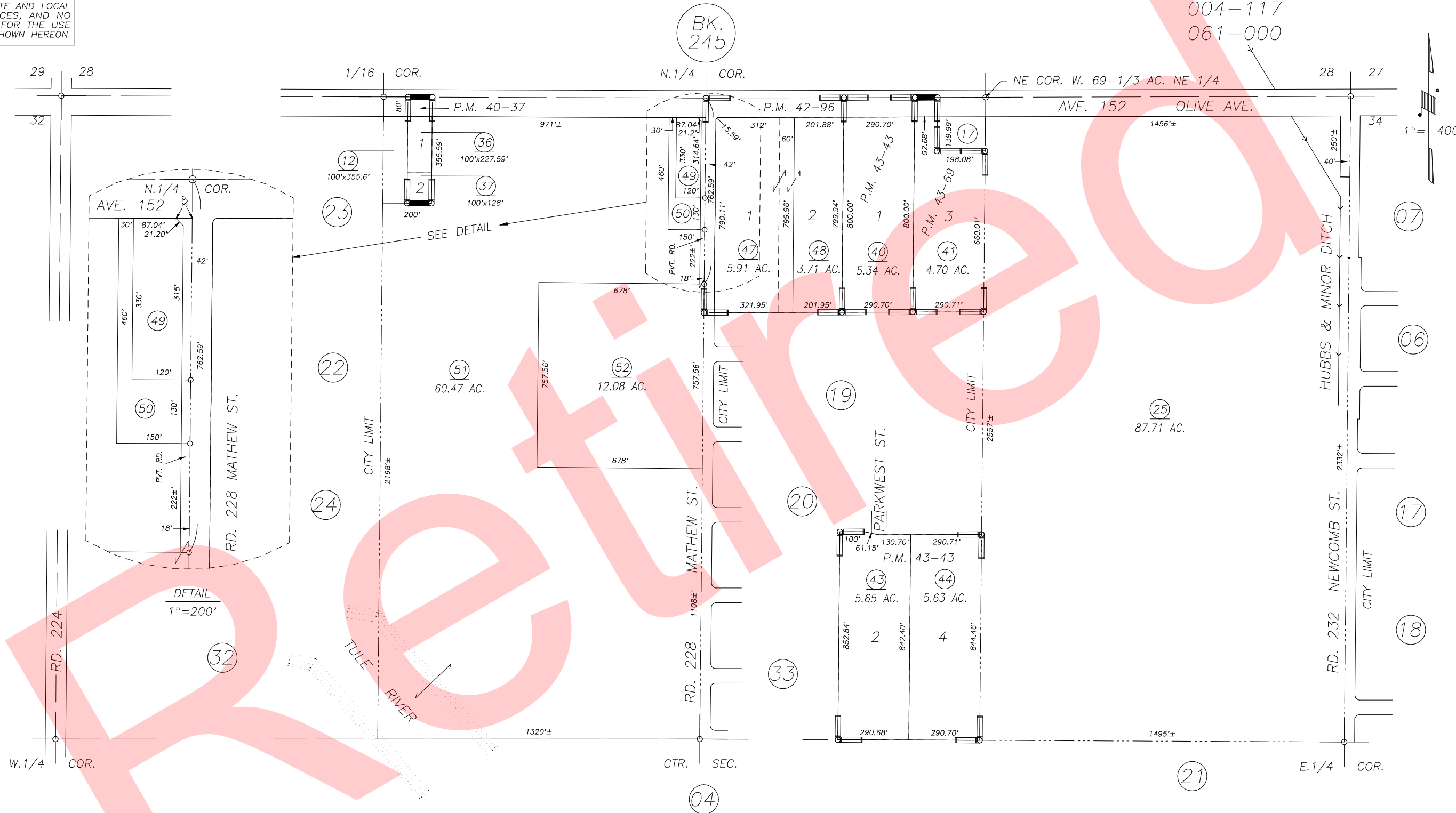


**DISCLAIMER**  
 THIS MAP WAS PREPARED FOR LOCAL PROPERTY ASSESSMENT PURPOSES ONLY AND THE PARCELS SHOWN HEREON MAY NOT COMPLY WITH STATE AND LOCAL SUBDIVISION ORDINANCES, AND NO LIABILITY IS ASSUMED FOR THE USE OF THE INFORMATION SHOWN HEREON.

POR. N1/2 SEC.33, T.21S., R.27E., M.D.B.&M.

Tax Area Codes 259-05

004-060  
 004-117  
 061-000



PARCEL MAP 3933, P.M. 40-37  
 PARCEL MAP 4192, R.M. 42-96  
 POR. PARCEL MAP 4239, P.M. 43-43  
 PARCEL MAP 4265, P.M. 43-69

VICINITY OF PORTERVILLE  
 ASSESSOR'S MAPS BK. 259 , PG. 05  
 COUNTY OF TULARE, CALIFORNIA, U.S.A.

NOTE: Assessor's Parcel Numbers Shown in Circles ① 123  
 Assessor's Block Numbers Shown in Ellipses BK. 245

2003-0122977	12/20/2004	RBP
REVISION	DATE	TECH