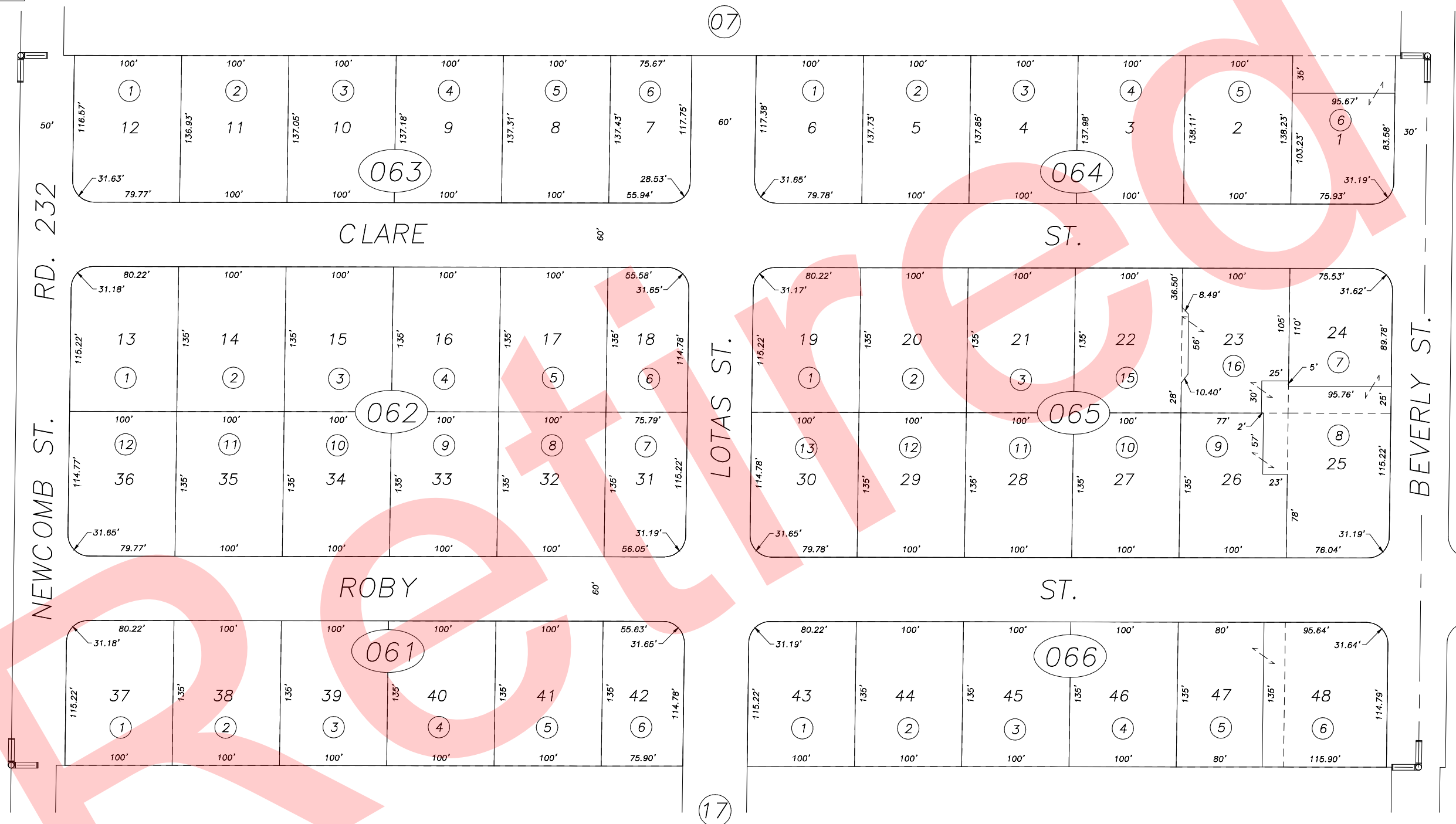


**DISCLAIMER**  
 THIS MAP WAS PREPARED FOR LOCAL PROPERTY ASSESSMENT PURPOSES ONLY AND THE PARCELS SHOWN HEREON MAY NOT COMPLY WITH STATE AND LOCAL SUBDIVISION ORDINANCES, AND NO LIABILITY IS ASSUMED FOR THE USE OF THE INFORMATION SHOWN HEREON.

S 1/2 OF NW 1/4 OF NW 1/4 SEC. 34, T.21S., R.27E., M.D.B. & M. Tax Area Code 259-06  
 126-001



1991-0066463	5/16/01	PHN
REVISION	DATE	BY

TRACT NO. 157, R.M. 20-49

ASSESSOR'S MAPS BK. 259 , PG. 06 .  
 COUNTY OF TULARE, CALIF.

NOTE: Assessor's Block Numbers Shown in Ellipses  
 Assessor's Parcel Numbers Shown in Circles