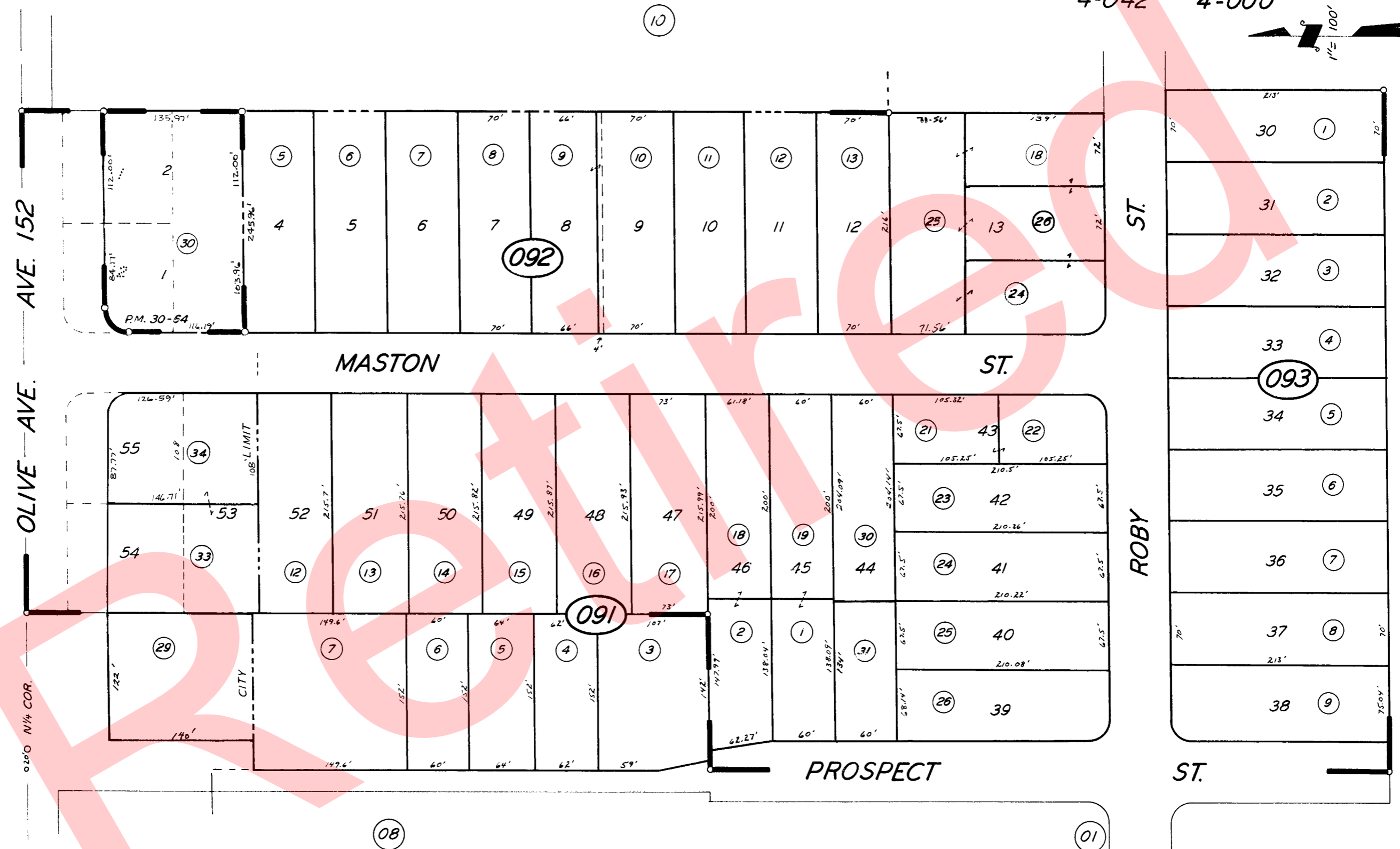
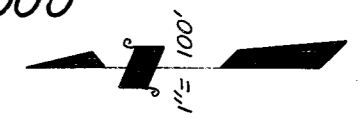


POR. NW 1/4 OF NE 1/4 & POR. NE 1/4 OF NW 1/4 SEC. 34, T.21S., R. 27E., M.D.B. & M.

TAX CODE AREA 259-09

126-001 4-048

4-042 4-000



BK.251

POR. TRACT NO. 45,
PARCEL MAP 2963, P.M. 30-64

RM. 19-82

CITY OF PORTERVILLE
ASSESSOR'S MAPS BK. 259, PG. 09
COUNTY OF TULARE, CALIF.

NOTE - ASSESSOR'S BLOCK NUMBERS SHOWN IN ELLIPSES
ASSESSOR'S PARCEL NUMBERS SHOWN IN CIRCLES