

POR. NW 1/4 OF NE 1/4 & POR. NE 1/4 OF NW 1/4 SEC. 34, T.21S., R. 27E., M.D.B. & M.

TAX CODE AREA

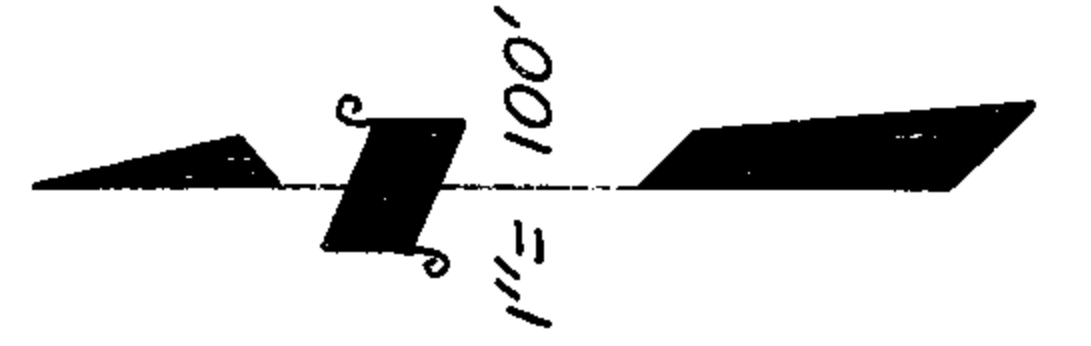
259-09

004-042

004-048

004-150

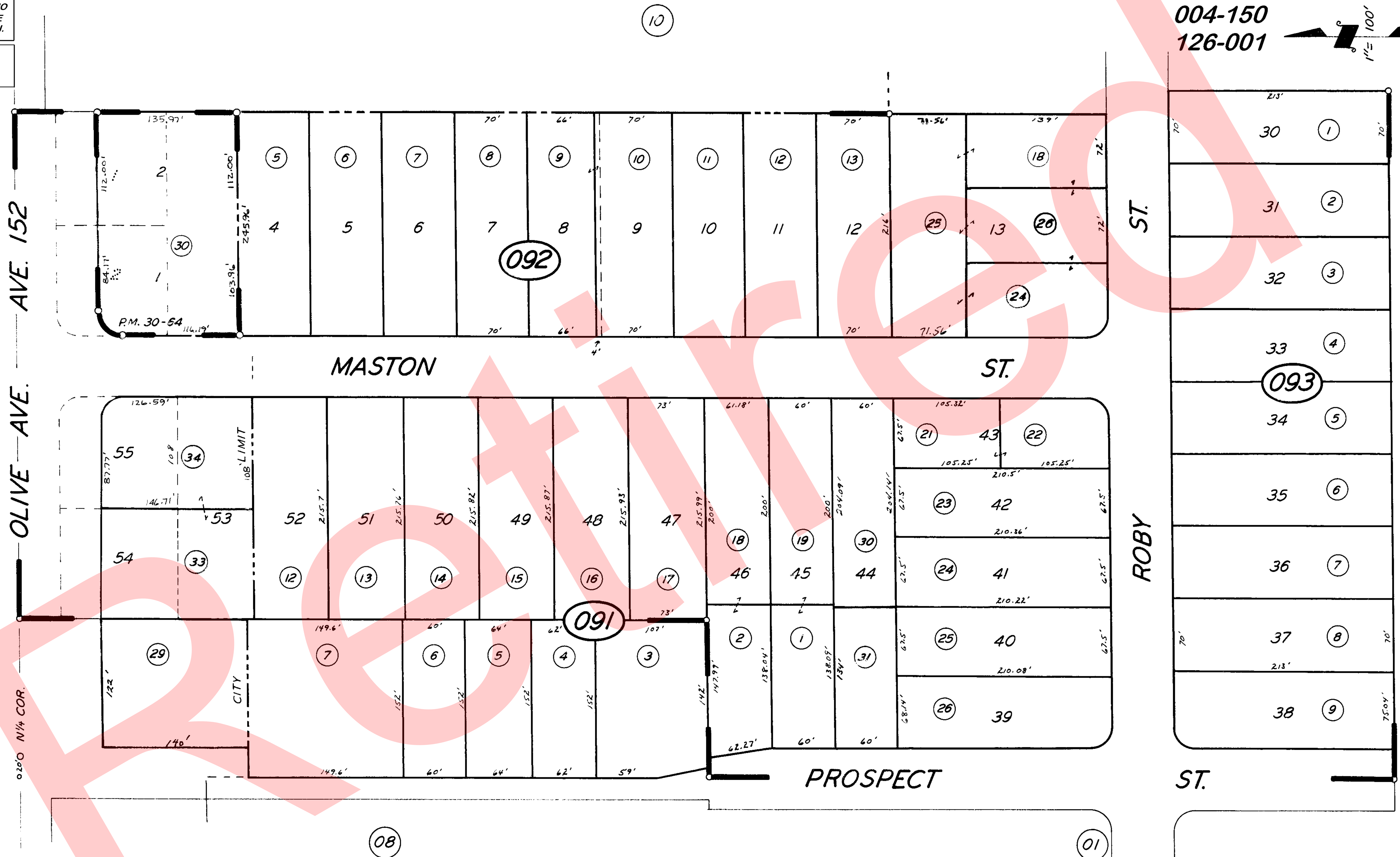
126-001



DISCLAIMER

THIS MAP WAS PREPARED FOR LOCAL PROPERTY ASSESSMENT PURPOSES ONLY. THE PARCELS SHOWN HEREON MAY NOT COMPLY WITH STATE AND LOCAL SUBDIVISION ORDINANCES. NO LIABILITY IS ASSUMED FOR THE USE OF THE INFORMATION HEREON.

REVISED: 04/15/2011
REASON: TRAC CHANGE ONLY
CAD TECH: KMS



BK.251

POR. TRACT NO. 45,
PARCEL MAP 2963, P.M. 30-64

RM. 19-82

CITY OF PORTERVILLE
ASSESSOR'S MAPS BK. 259, PG. 09
COUNTY OF TULARE, CALIF.

NOTE -- ASSESSOR'S BLOCK NUMBERS SHOWN IN ELLIPSES
ASSESSOR'S PARCEL NUMBERS SHOWN IN CIRCLES

