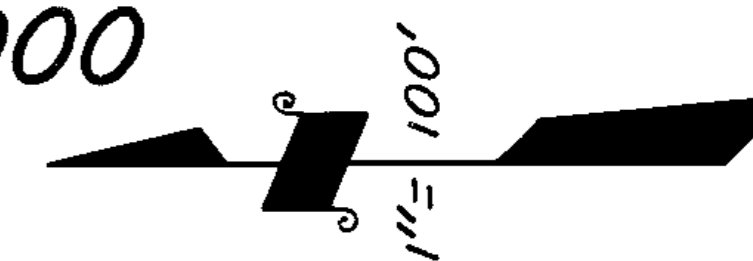


E 1/2 OF NW 1/4 OF NE 1/4 SEC. 34, T.21S., R. 27E., M.D.B. & M.

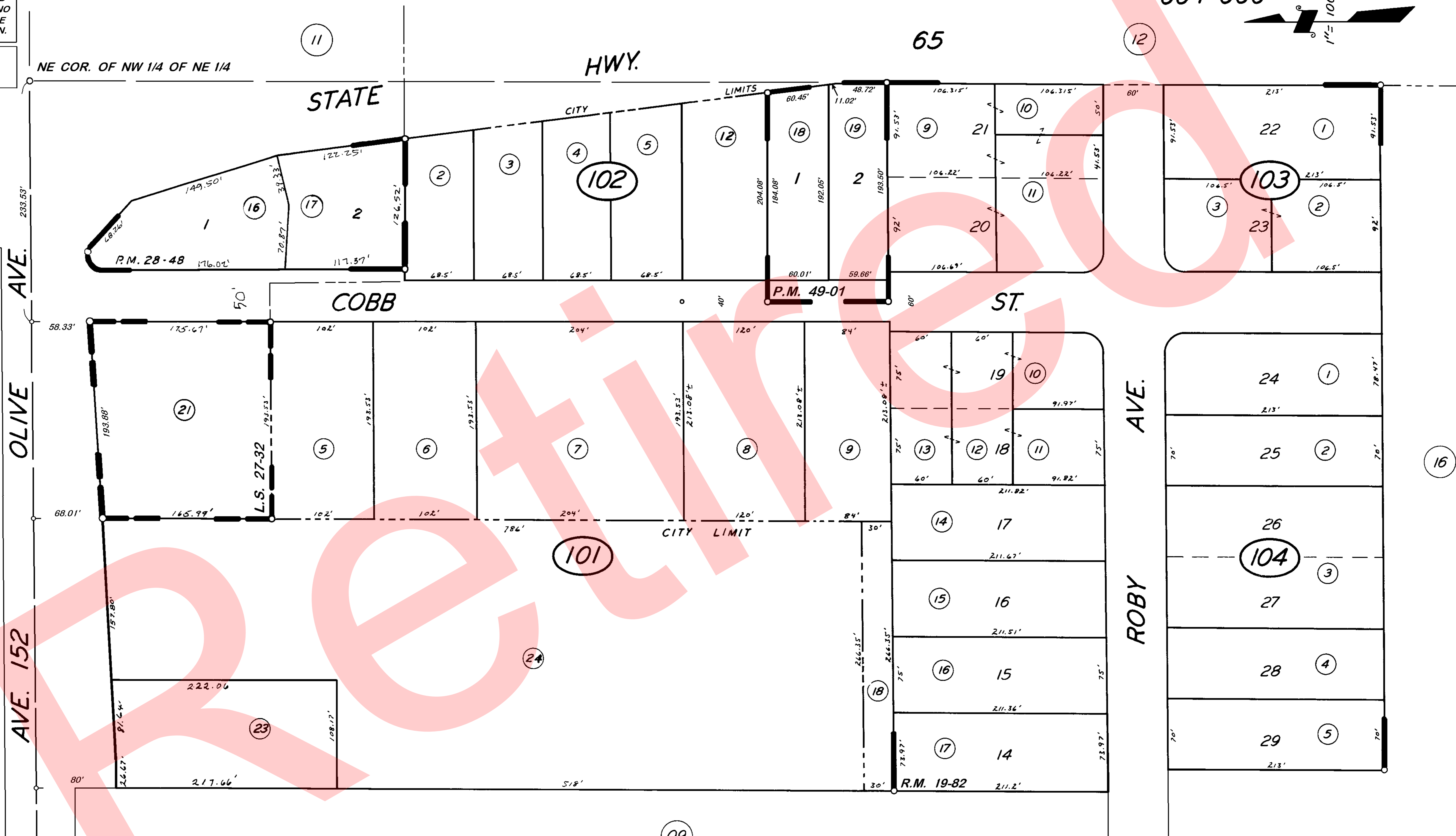
TAX CODE AREA 259-10

126-001
004-000



DISCLAIMER
THIS MAP WAS PREPARED FOR LOCAL PROPERTY ASSESSMENT PURPOSES ONLY. THE PARCELS SHOWN HEREON MAY NOT COMPLY WITH STATE AND LOCAL SUBDIVISION ORDINANCES. NO LIABILITY IS ASSUMED FOR THE USE OF THE INFORMATION HEREON.

REVISED: 01/09/2009
REASON: 2006-0120012
CAD TECH: LLB



**POR. TRACT NO. 45,
PARCEL MAP 2747,
PARCEL MAP 4796,
RECORD OF SURVEY,**

**R.M. 19-82
P.M. 28-48
P.M. 49-01
L.S. 27-32**

**VICINITY OF PORTERVILLE
ASSESSOR'S MAPS BK. 259, PG. 10
COUNTY OF TULARE, CALIF.**

NOTE — ASSESSOR'S BLOCK NUMBERS SHOWN IN ELLIPSES
ASSESSOR'S PARCEL NUMBERS SHOWN IN CIRCLES

