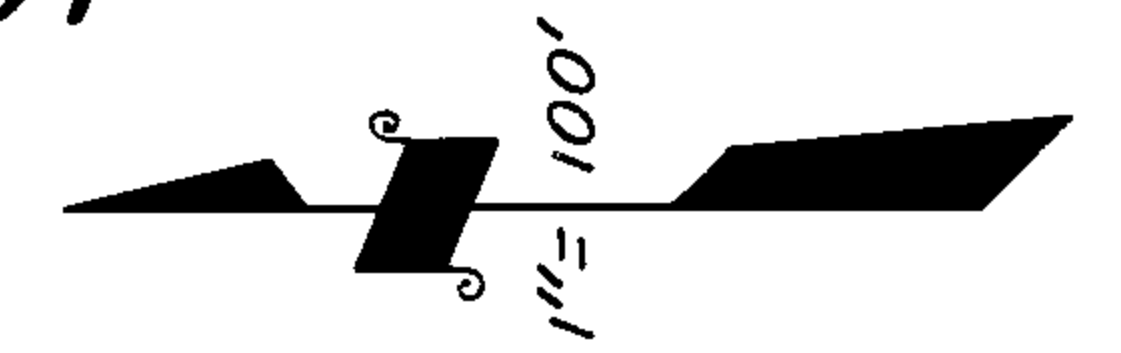
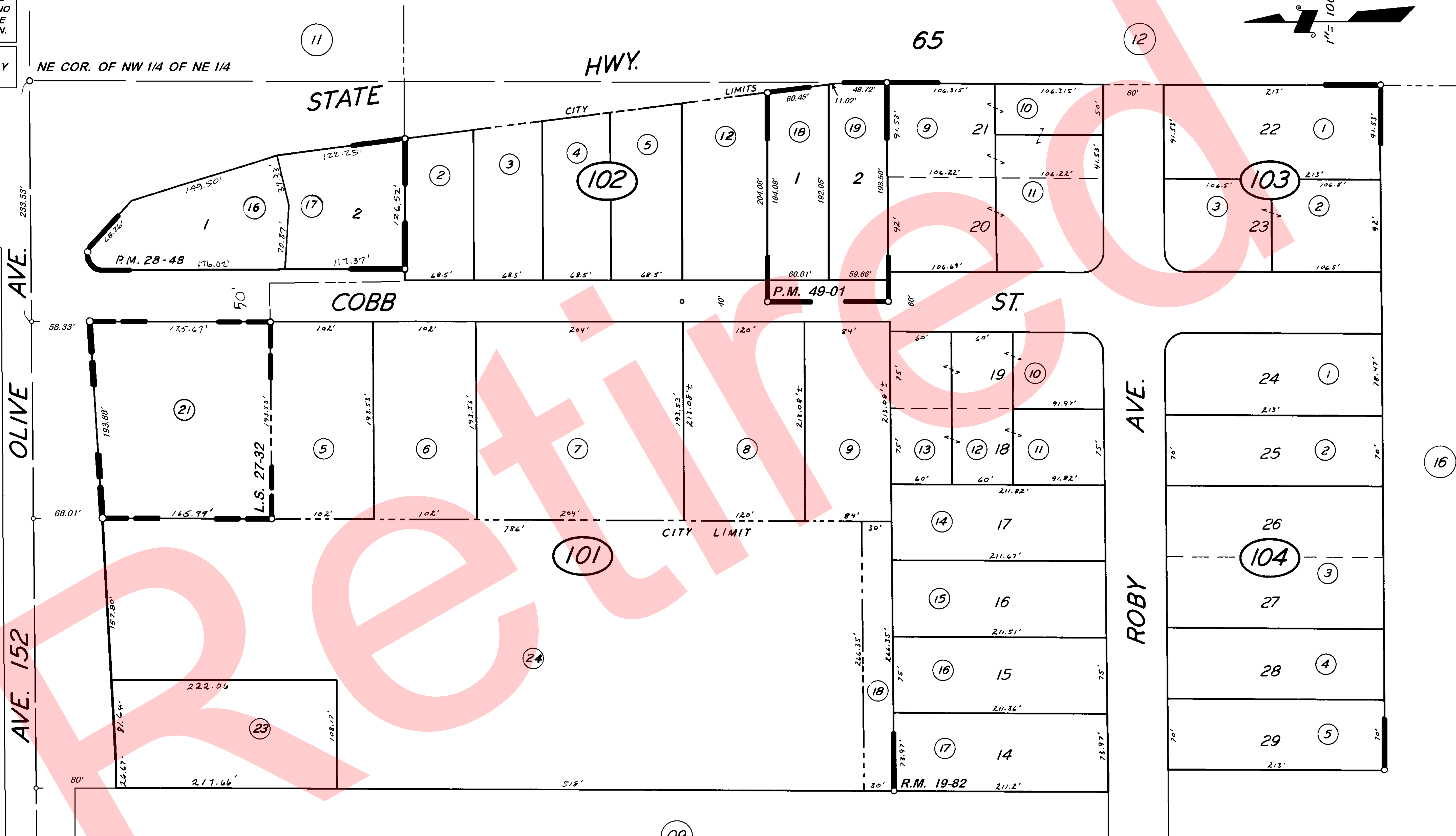


E 1/2 OF NW 1/4 OF NE 1/4 SEC. 34, T.21S., R. 27E., M.D.B. & M.

TAX CODE AREA **259-10**
 004-150
 126-001



DISCLAIMER
 THIS MAP WAS PREPARED FOR LOCAL PROPERTY ASSESSMENT PURPOSES ONLY. THE PARCELS SHOWN HEREON MAY NOT COMPLY WITH STATE AND LOCAL SUBDIVISION ORDINANCES. NO LIABILITY IS ASSUMED FOR THE USE OF THE INFORMATION HEREON.
 REVISED: 04/20/2011
 REASON: TRAC CHANGE ONLY
 CAD TECH: KMS



POR. TRACT NO. 45,
PARCEL MAP 2747,
PARCEL MAP 4796,
RECORD OF SURVEY,

R.M. 19-82
P.M. 28-48
P.M. 49-01
L.S. 27-32

VICINITY OF PORTERVILLE
ASSESSOR'S MAPS BK. 259, PG. 10
COUNTY OF TULARE, CALIF.

NOTE — ASSESSOR'S BLOCK NUMBERS SHOWN IN ELLIPSES
 ASSESSOR'S PARCEL NUMBERS SHOWN IN CIRCLES

