

DISCLAIMER

THIS MAP WAS PREPARED FOR LOCAL PROPERTY ASSESSMENT PURPOSES ONLY. THE PARCELS SHOWN HEREON MAY NOT COMPLY WITH STATE AND LOCAL SUBDIVISION ORDINANCES. NO LIABILITY IS ASSUMED FOR THE USE OF THE INFORMATION HEREON.

REVISED: 08/09/2007
REASON: TRAC CHANGE
CAD TECH: JRS

POR. NE 1/4 OF NE 1/4 SEC. 34, T.21S., R.27E., M.D.B. & M.

TAX CODE AREA

259-11

004-000

004-130

BK. 251

27 26

R. M. 8-29

NW COR. E 1/2
LT 24

AVE. 152

OLIVE

AVE.

35

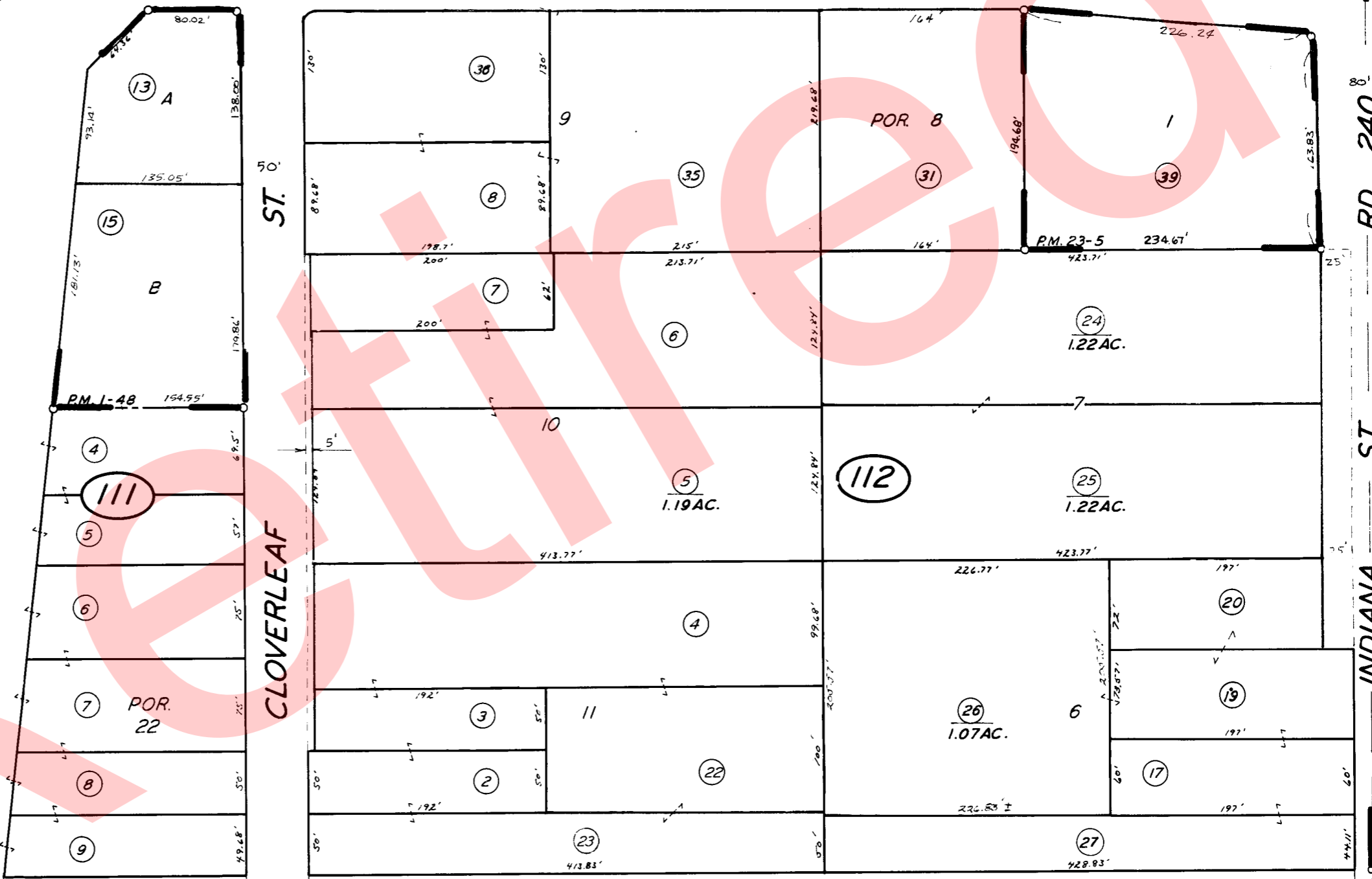
65
HWY.
STATE

ST.
CLOVERLEAF

RD. 240
ST.
INDIANA

1" = 100'

BK. 260



POR. CLOVER LEAF TRACT, R.M. 8-29
PARCEL MAP 48, P.M. 1-48
PARCEL MAP 2204, P.M. 23-5

CITY OF PORTERVILLE
ASSESSOR'S MAPS BK. 259, PG. 11
COUNTY OF TULARE, CALIF.

NOTE -- ASSESSOR'S BLOCK NUMBERS SHOWN IN ELLIPSES
ASSESSOR'S PARCEL NUMBERS SHOWN IN CIRCLES