

S1/2 OF SE1/4 OF NE1/4 SEC.34, T.21S., R.27E., M.D.B.&M.

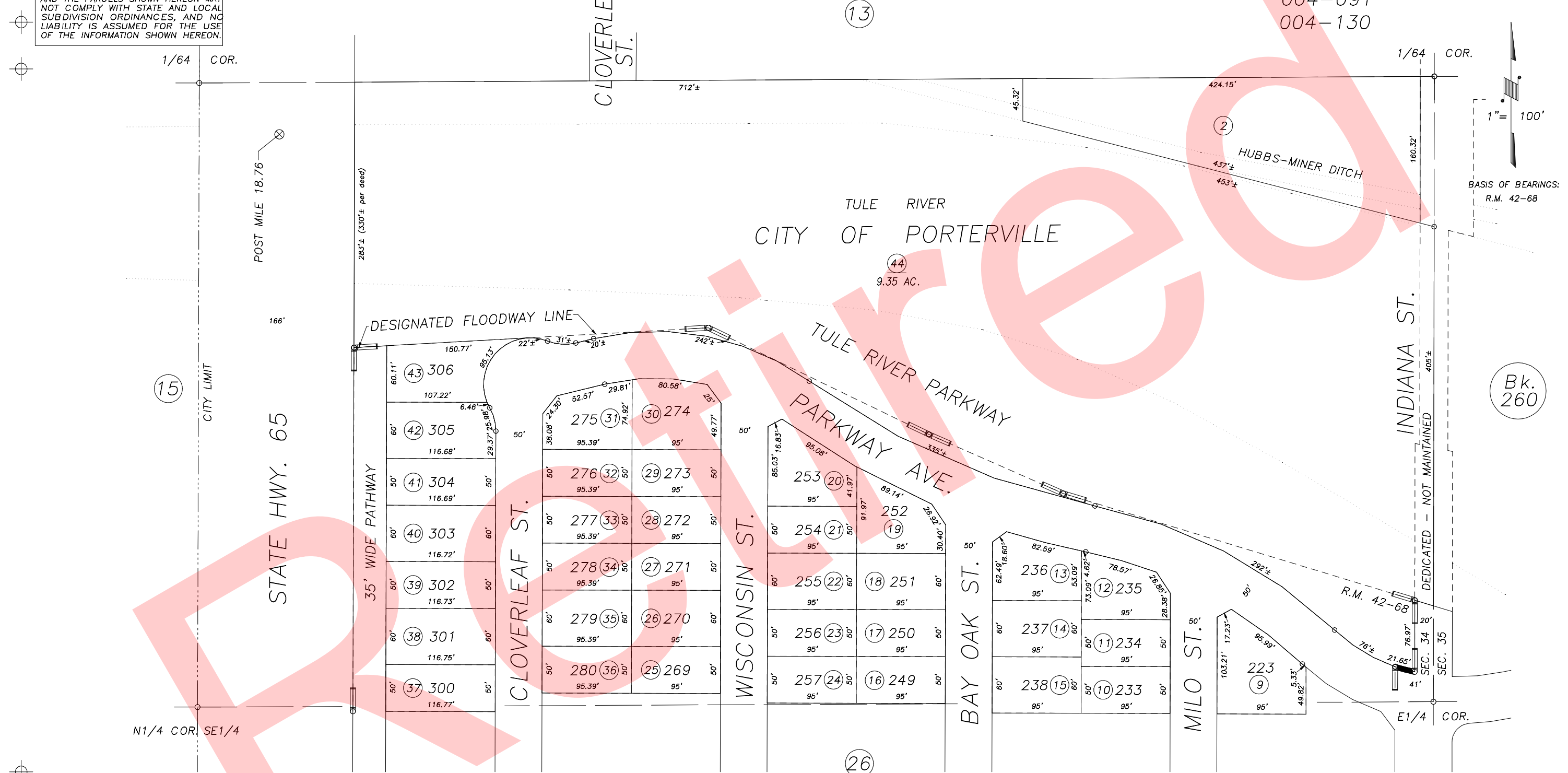
Tax Area Codes 259-14

004-000

004-091

004-130

DISCLAIMER
THIS MAP WAS PREPARED FOR LOCAL PROPERTY ASSESSMENT PURPOSES ONLY AND THE PARCELS SHOWN HEREON MAY NOT COMPLY WITH STATE AND LOCAL SUBDIVISION ORDINANCES, AND NO LIABILITY IS ASSUMED FOR THE USE OF THE INFORMATION SHOWN HEREON.



POR. NEW EXPRESSIONS PHASE FIVE, R.M. 42-68

CITY OF PORTERVILLE
ASSESSOR'S MAPS BK.259 , PG.14
COUNTY OF TULARE, CALIFORNIA, U.S.A.

NOTE: Assessor's Parcel Numbers Shown in Circles (1) (123)
Assessor's Block Numbers Shown in Ellipses (1) (123)

2007-0047264	11/12/2008	JRS
REVISION	DATE	TECH