

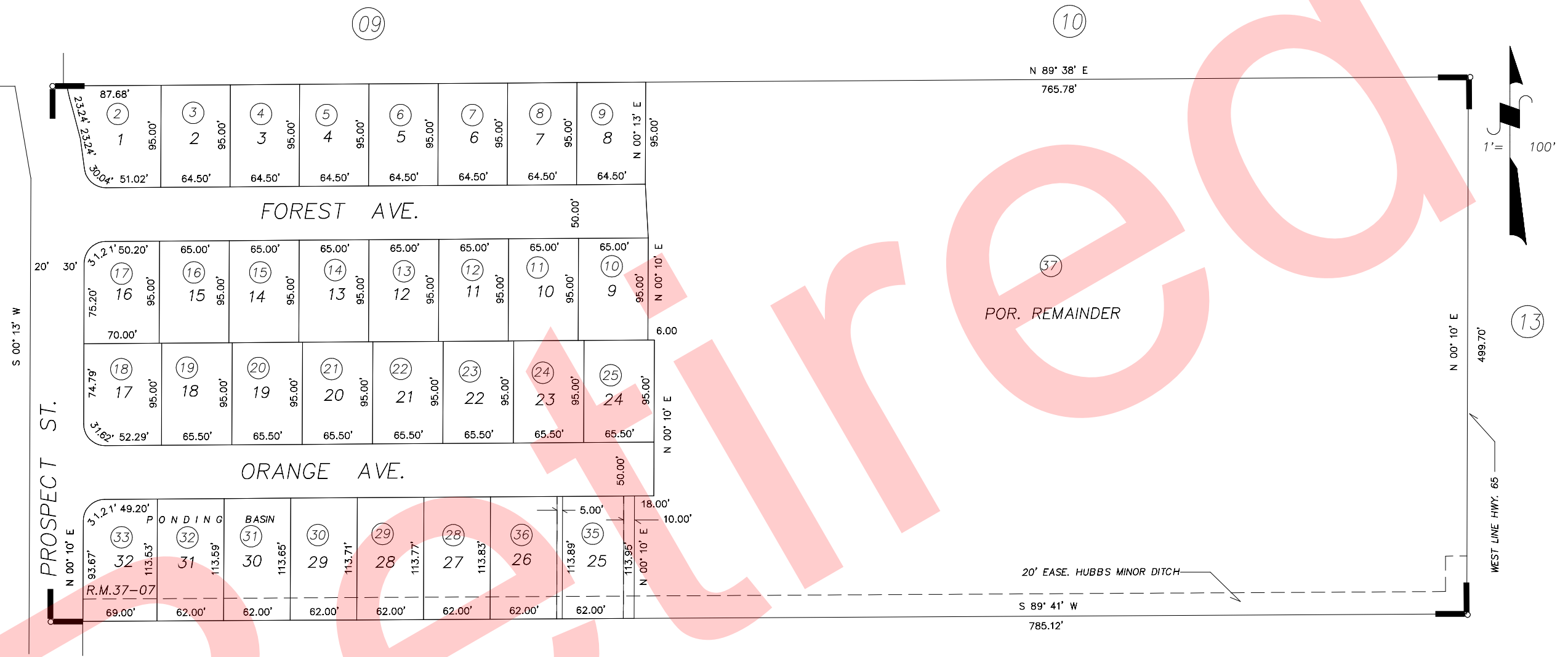
POR. N 1/2 OF SW 1/4 OF NE 1/4 SEC. 34, T.21 S. R.27 E., M.D.B.M.

TAX CODE AREA  
004-017

259-16

**DISCLAIMER**  
This map was prepared for local property assessment purposes only and the parcels shown hereon may not comply with state and local subdivision ordinances, and no liability is assumed for the use of the information shown hereon.

REVISION	DATE	BY
R.M. 37-7	1-17-96	LB
LLA 1-96	8-2-96	LB



SUNRISE ESTATES SIX PHASE ONE R.M. 37-07

CITY OF PORTERVILLE  
ASSESSOR'S MAPS BK. 259 PG. 16  
COUNTY OF TULARE, CALIF.

NOTE - ASSESSOR'S BLOCK NUMBERS SHOWN IN ELLIPSES  
ASSESSOR'S PARCEL NUMBERS SHOWN IN CIRCLES