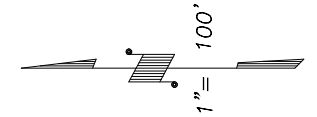


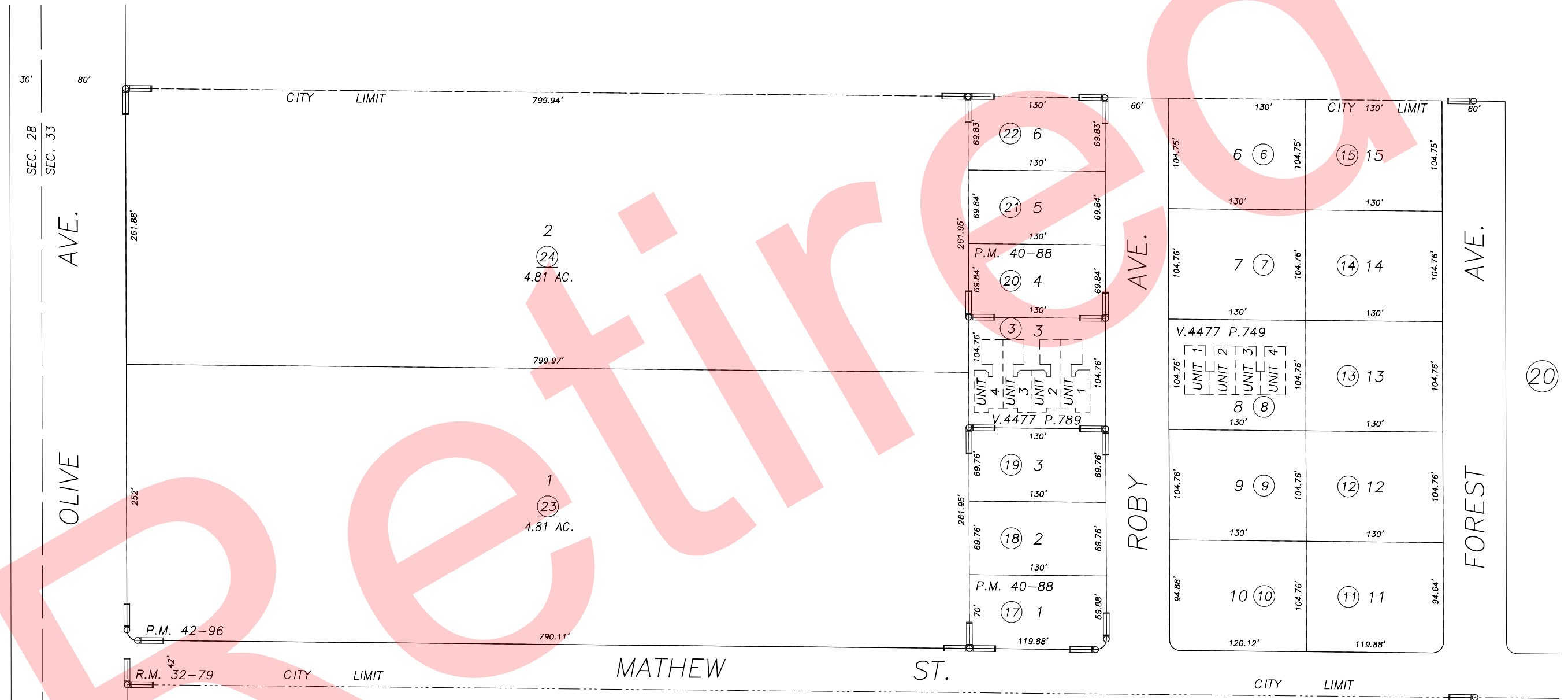
DISCLAIMER
 THIS MAP WAS PREPARED FOR LOCAL PROPERTY ASSESSMENT PURPOSES ONLY AND THE PARCELS SHOWN HEREON MAY NOT COMPLY WITH STATE AND LOCAL SUBDIVISION ORDINANCES, AND NO LIABILITY IS ASSUMED FOR THE USE OF THE INFORMATION SHOWN HEREON.

POR. W 1/2 OF NE 1/4 SECTION 33, T.21S., R.27E., M.D.B. & M. Tax Area Code 259-19

4-060



05



Bk. 245

P.M. 42-96	7/17/95	KPT	BY
REVISION	DATE		

TRACT NO. 647, R.M. 32-79
 CONDOMINIUM PLAN, O.R. V.4477, P.749
 CONDOMINIUM PLAN, O.R. V.4477, P.789
 PARCEL MAP 3984, P.M. 40-88
 PARCEL MAP 4192, P.M. 42-96

CITY OF PORTERVILLE
 ASSESSOR'S MAPS BK. 259, PG. 19.
 COUNTY OF TULARE, CALIF.

NOTE: Assessor's Block Numbers Shown in Ellipses
 Assessor's Parcel Numbers Shown in Circles

95/96

05

20