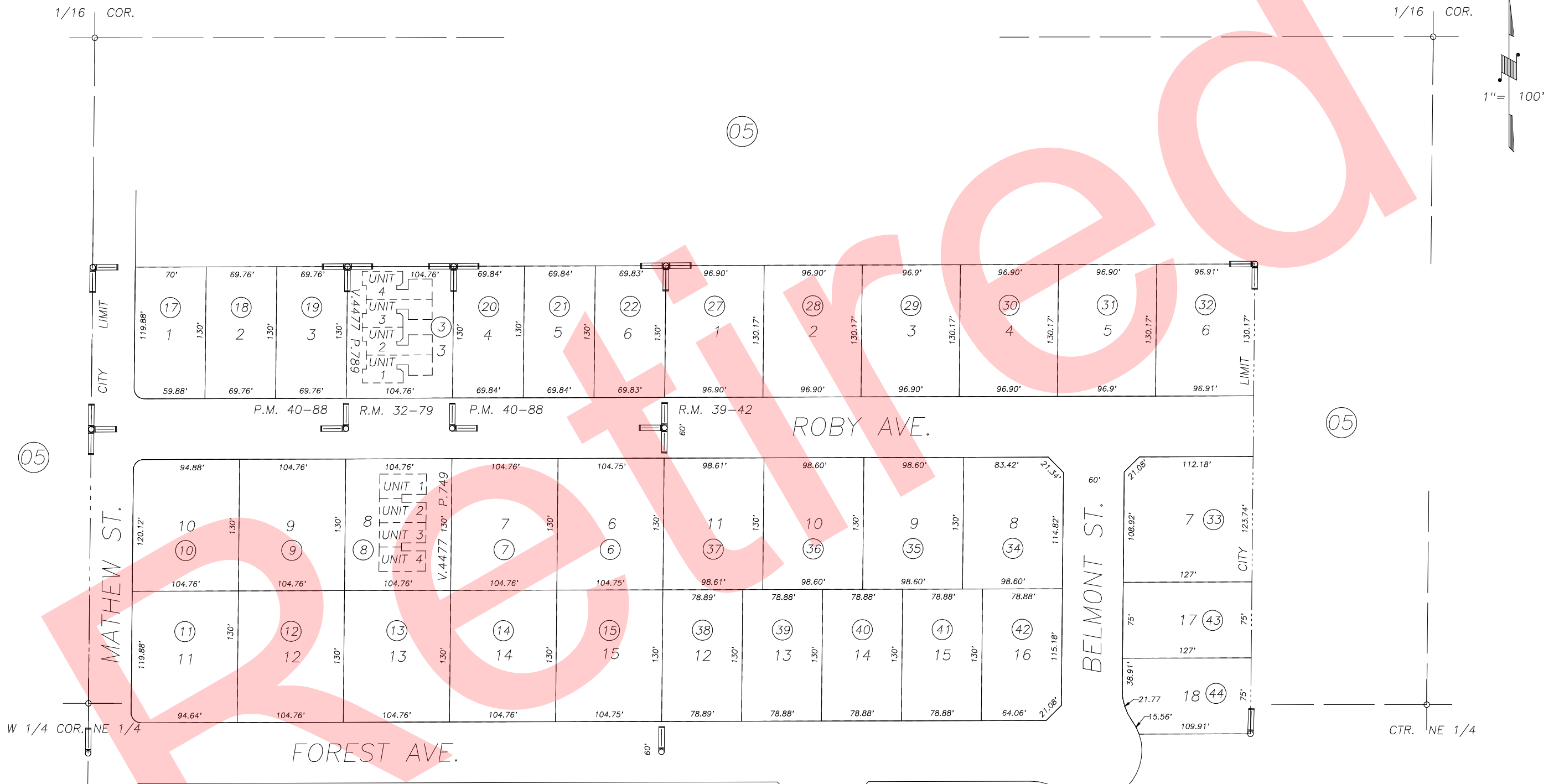


DISCLAIMER
 THIS MAP WAS PREPARED FOR LOCAL PROPERTY ASSESSMENT PURPOSES ONLY AND THE PARCELS SHOWN HEREON MAY NOT COMPLY WITH STATE AND LOCAL SUBDIVISION ORDINANCES, AND NO LIABILITY IS ASSUMED FOR THE USE OF THE INFORMATION SHOWN HEREON.

POR. S1/2 OF NW 1/4 OF NE1/4 SEC.33, T.21S., R.27E., M.D.B.&M. Tax Area Code 259-19

004-060
 004-117



POR. TRACT NO. 647, R.M. 32-79
 CONDOMINIUM PLAN, O.R. V.4477, P.749
 CONDOMINIUM PLAN, O.R. V.4477, P.789
 PARCEL MAP 3984, P.M. 40-88
 POR. RIVERVIEW ESTATES PHASE THREE, R.M. 39-42

CITY OF PORTERVILLE
 ASSESSOR'S MAPS BK. 259 , PG. 19
 COUNTY OF TULARE, CALIFORNIA, U.S.A.

NOTE: Assessor's Parcel Numbers Shown in Circles ① 123
 Assessor's Block Numbers Shown in Ellipses

2002-0032707	08/29/2002	KMS
REVISION	DATE	TECH