

DISCLAIMER

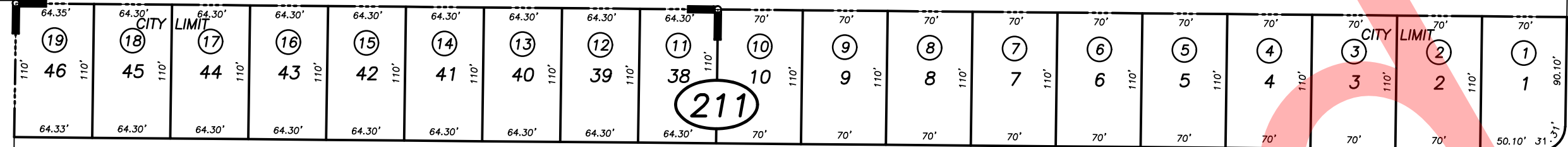
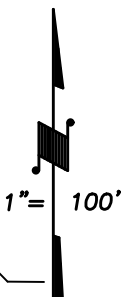
THIS MAP WAS PREPARED FOR LOCAL PROPERTY ASSESSMENT PURPOSES ONLY AND THE PARCELS SHOWN HEREON MAY NOT COMPLY WITH STATE AND LOCAL SUBDIVISION ORDINANCES, AND NO LIABILITY IS ASSUMED FOR THE USE OF THE INFORMATION SHOWN HEREON.

POR. N 1/2 OF NE 1/4 OF SW 1/4 OF SEC. 33, T.21S., R.27E., M.D.B. & M. Tax Area Code 259-21

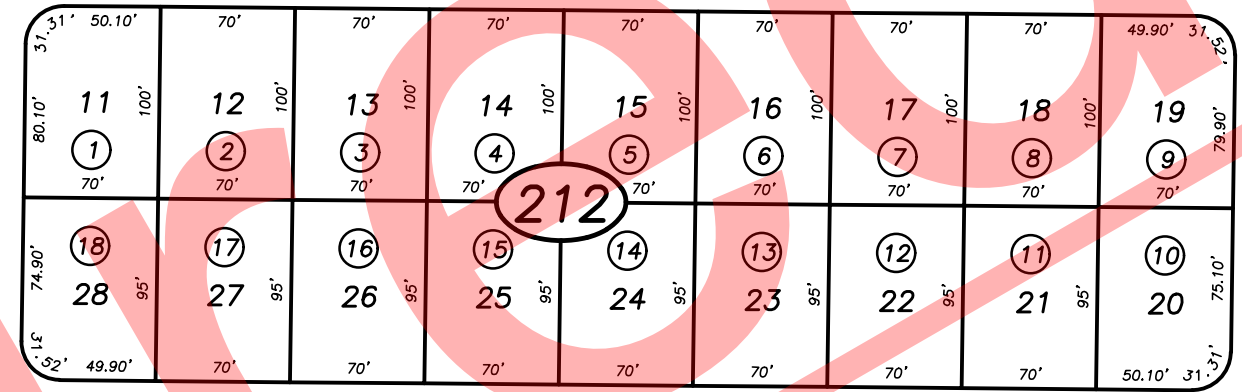
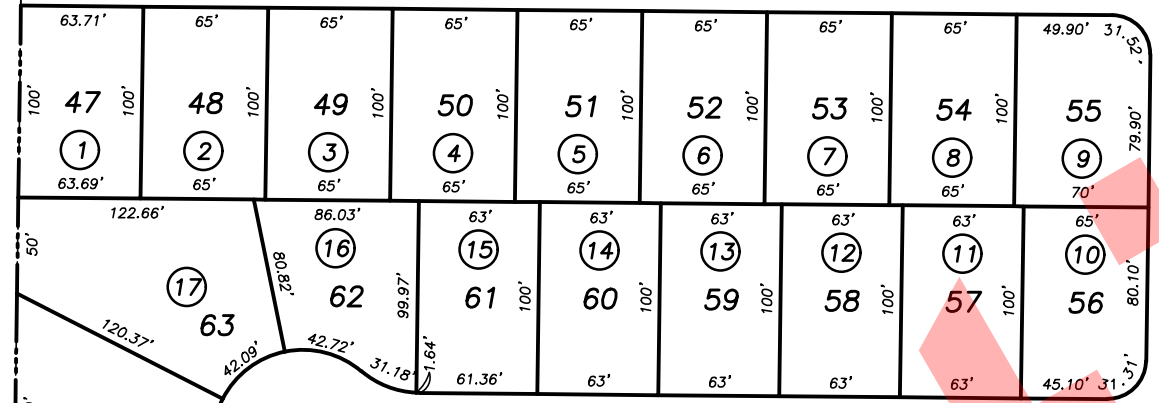
4-014

05

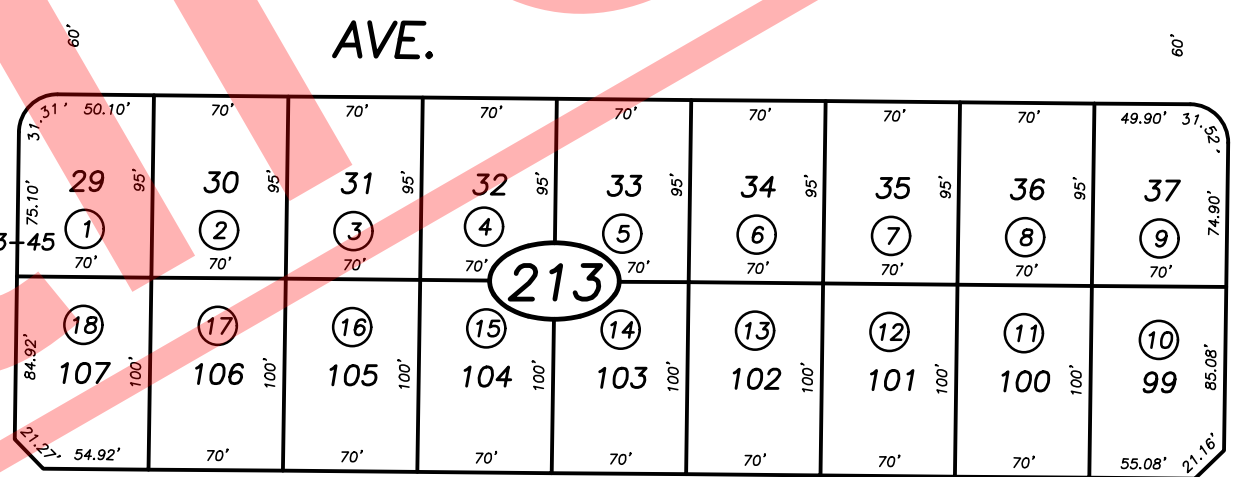
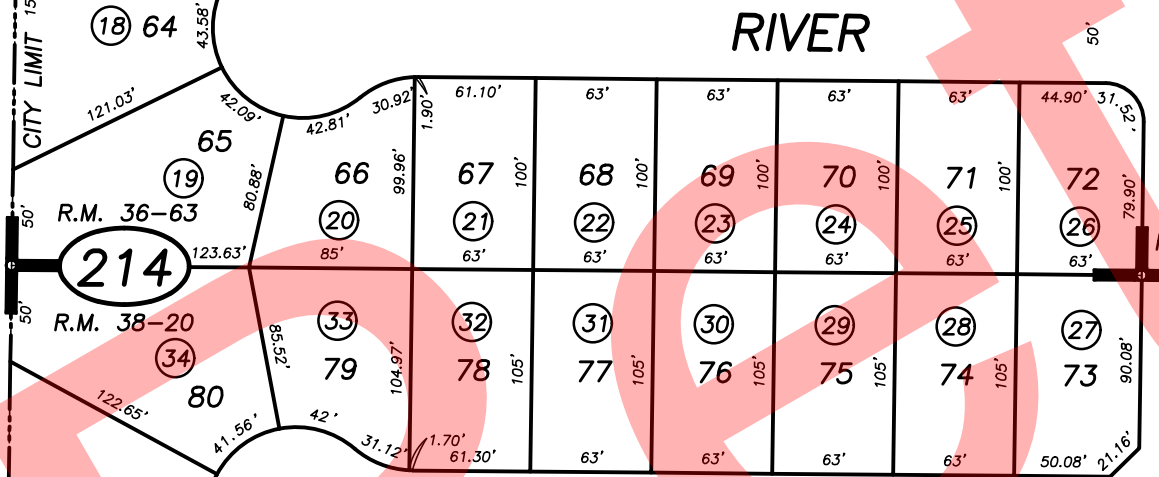
E. 1/4 COR.



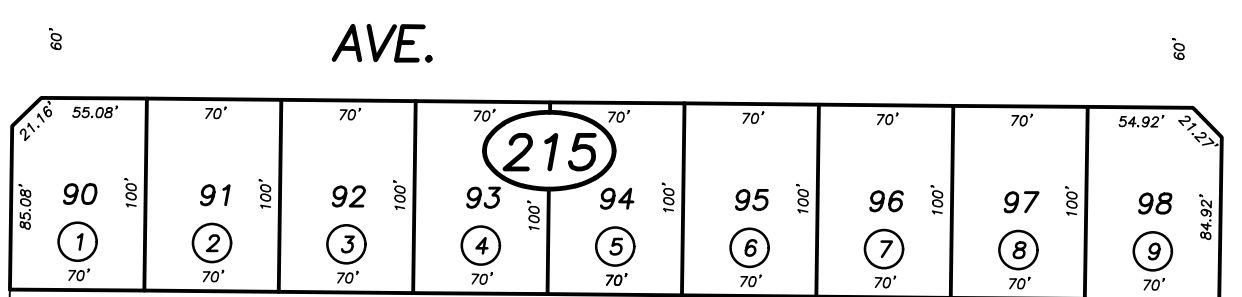
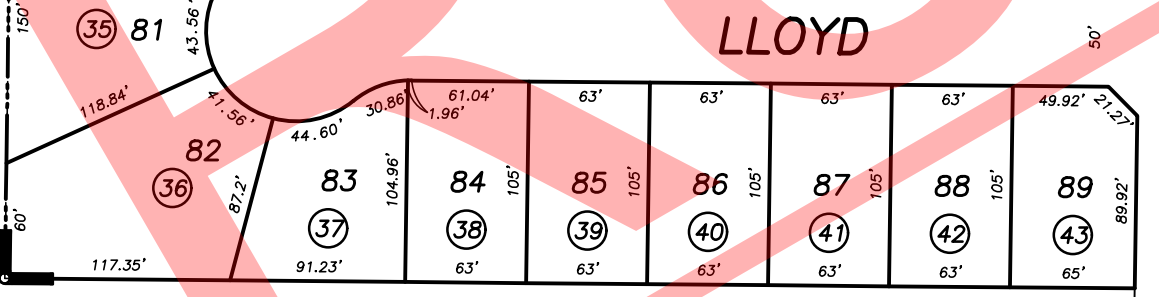
DATE AVE.



RIVER AVE.



LLOYD AVE.



NEWCOMB ST.

POR. RIVER RANCH ESTATES UNIT 1, R.M. 33-45
RIVER RANCH ESTATES UNIT 2, R.M. 36-63
RIVER RANCH ESTATES UNIT 3, R.M. 38-20

CITY OF PORTERVILLE
ASSESSOR'S MAPS BK. 259, PG. 21.
COUNTY OF TULARE, CALIF.

R.M. 38-20	12/11/98	KPT
REVISION	DATE	BY

NOTE: Assessor's Block Numbers Shown in Ellipses
Assessor's Parcel Numbers Shown in Circles

99/00