

DISCLAIMER
 THIS MAP WAS PREPARED FOR LOCAL PROPERTY ASSESSMENT PURPOSES ONLY AND THE PARCELS SHOWN HEREON MAY NOT COMPLY WITH STATE AND LOCAL SUBDIVISION ORDINANCES, AND NO LIABILITY IS ASSUMED FOR THE USE OF THE INFORMATION SHOWN HEREON.

POR. SE 1/4 SECTION 34, T.21S., R.27E., M.D.B. & M.

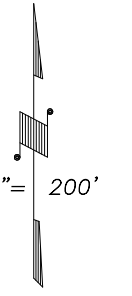
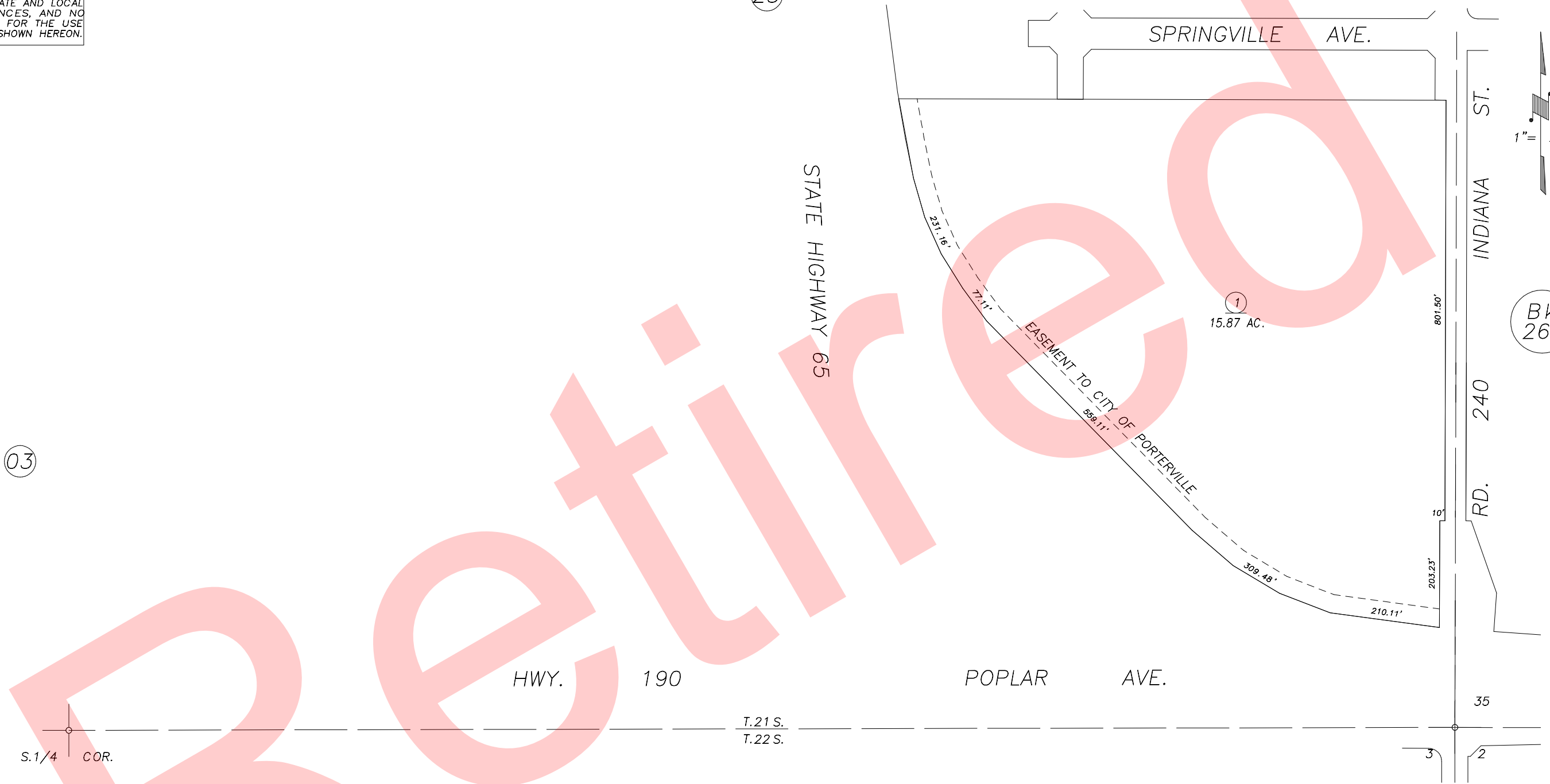
Tax Area Code 259-27
 4-000

25

03

LLA 1-98	REVISION	DATE	BY

S.1/4 COR.



Bk. 260

Bk. 268

CITY OF PORTERVILLE
 ASSESSOR'S MAPS BK. 259 , PG. 27 .
 COUNTY OF TULARE, CALIF.

NOTE: Assessor's Block Numbers Shown in Ellipses
 Assessor's Parcel Numbers Shown in Circles

99/00