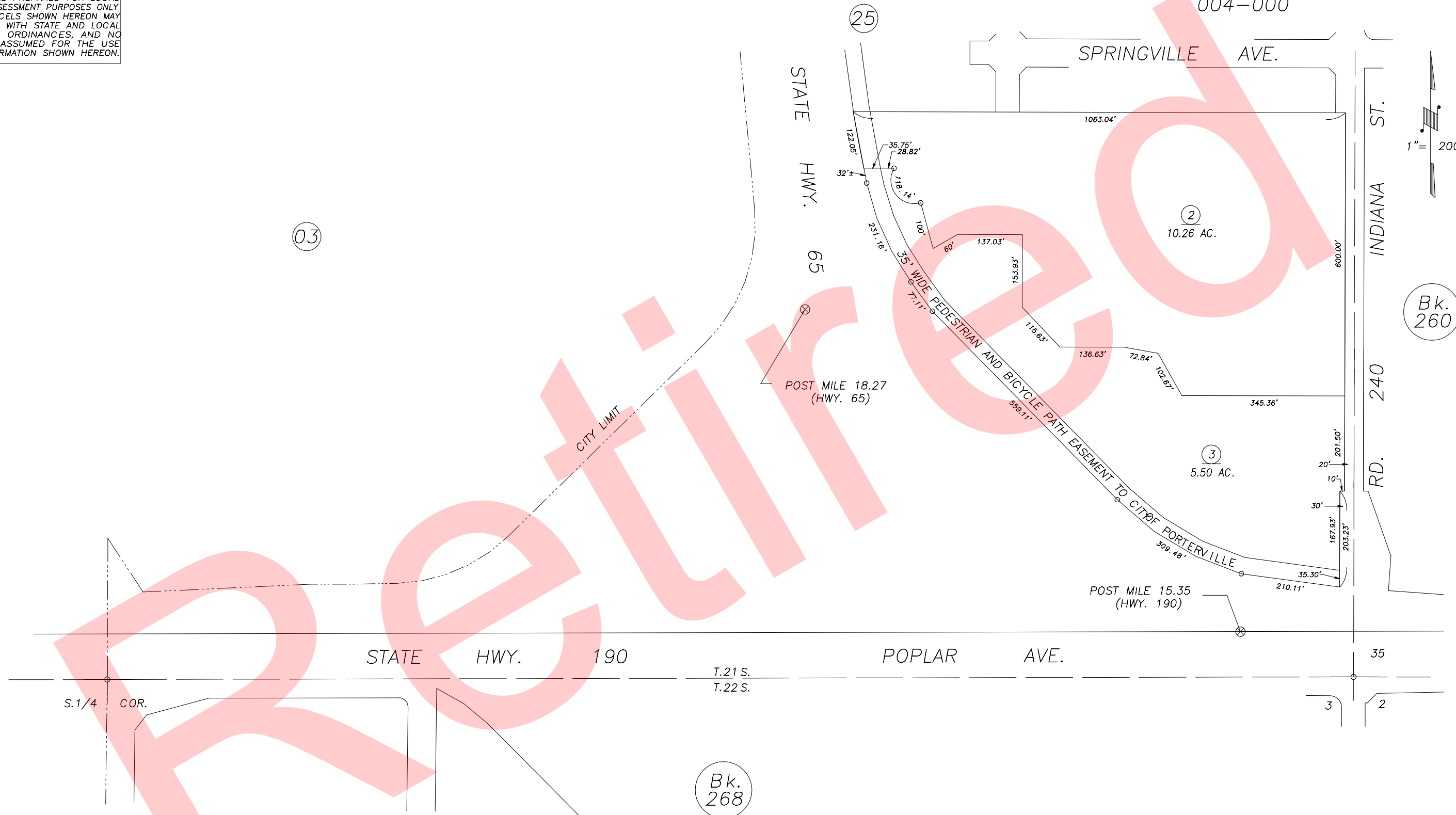


**DISCLAIMER**  
 THIS MAP WAS PREPARED FOR LOCAL PROPERTY ASSESSMENT PURPOSES ONLY AND THE PARCELS SHOWN HEREON MAY NOT COMPLY WITH STATE AND LOCAL SUBDIVISION ORDINANCES, AND NO LIABILITY IS ASSUMED FOR THE USE OF THE INFORMATION SHOWN HEREON.

POR. SE 1/4 SECTION 34, T.21S., R.27E., M.D.B. & M.

Tax Area Code 259-27  
 004-000



REVISION	DATE	TECH
2001-0047980	12/04/2001	R/JL

CITY OF PORTERVILLE  
 ASSESSOR'S MAPS BK. 259 , PG. 27 .  
 COUNTY OF TULARE, CALIF.

NOTE: Assessor's Block Numbers Shown in Ellipses  
 Assessor's Parcel Numbers Shown in Circles