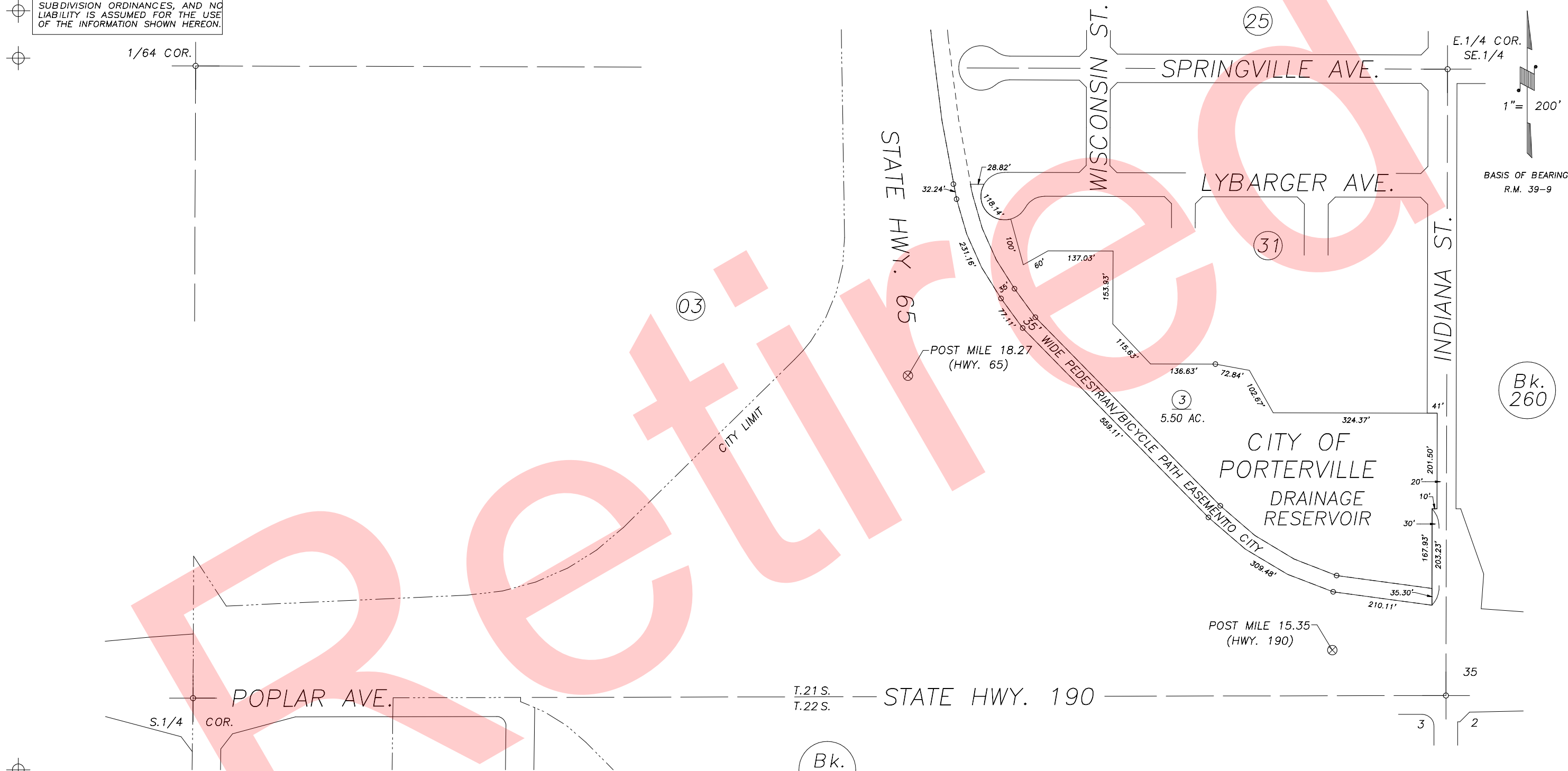


S1/2 SE1/4 SEC.34, T.21S., R.27E., M.D.B.&M.

Tax Area Codes 259-27
004-000
126-001

DISCLAIMER
THIS MAP WAS PREPARED FOR LOCAL PROPERTY ASSESSMENT PURPOSES ONLY AND THE PARCELS SHOWN HEREON MAY NOT COMPLY WITH STATE AND LOCAL SUBDIVISION ORDINANCES, AND NO LIABILITY IS ASSUMED FOR THE USE OF THE INFORMATION SHOWN HEREON.



1" = 200'
BASIS OF BEARINGS:
R.M. 39-9

CITY OF PORTERVILLE
ASSESSOR'S MAPS BK.259 , PG27
COUNTY OF TULARE, CALIFORNIA, U.S.A.

NOTE: Assessor's Parcel Numbers Shown in Circles (1) (123)
Assessor's Block Numbers Shown in Elipses (3) (123)

REVISE TARGET AREA	05/05/2004	SU
REVISION	DATE	TECH